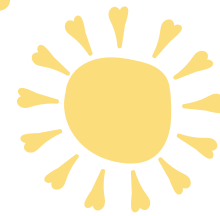




# AAASAC MONTHLY NEWSLETTER



APRIL 2024

## Connect & Learn

We were all new to JMU at one point and we still remember learning all those “unwritten” rules and processes. We plan to discuss what we’re doing right and what we need to improve upon. “Help us help you” because we’re all in this together. We’ll also talk a little about how to best use the slower summer hours to create a fantastic academic year! Whether you’re brand new or a seasoned veteran we really want to hear from you!

May 21 from 3pm-4:30  
Pathways Room, Wine-Price Building



## Part-Time

### Employees Wanted

Are you a part-time JMU employee? Are you looking to connect and network with some amazing personalities across campus? If this interests you, please consider joining AAASAC .

[JOIN NOW](#)



## FACULTY/STAFF CLUBS

DID YOU KNOW ABOUT THE MANY FACULTY & STAFF CLUBS THAT ARE AVAILABLE HERE AT JMU?? THESE CLUBS ARE MEANT TO ENCOURAGE ENGAGEMENT & COMMUNITY AMONG FACULTY & STAFF.



### CURRENT OPTIONS INCLUDE:

- ADULT FANS OF LEGO
- FOODIES READ
- PICKLEBALL
- UNWIND
- WALKING GROUPS



FOR MORE INFO, CHECK OUT THIS [LINK](#).



## CHROME RIVER

## CHROME RIVER

## CHROME RIVER



## BUSINESS PURPOSE

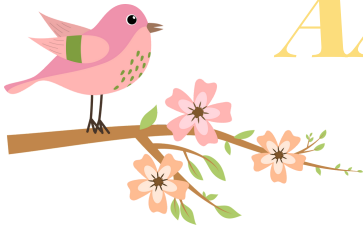


When submitting Chrome River reimbursements, it's essential to provide Accounts Payable with a detailed JMU business purpose that clearly justifies how or why the expense is relevant to JMU and reimbursable with state funds. Merely stating "conference" or “AUH Approved” is not sufficient. The more detail you can offer, the better. For instance: “Dr. Smith attended the Deeper Learning Conference and presented their paper ‘Impact of the Pandemic on Students Mental Health’. This directly relates to their role at JMU as a professor of psychology, specializing in mental health.”

[Need help or have a question? ASACHelpline@jmu.edu](mailto:ASACHelpline@jmu.edu)

# AAASAC MONTHLY NEWSLETTER

APRIL 2024



## SPRING IS ON ITS WAY!

WHICH MEANS THE ON-CAMPUS



IS BACK!

HOSTED BY JMU DINING, THE FARMER'S MARKET BRINGS LOCAL VENDORS TO JMU WHO SELL FOOD, DRINKS, PRODUCE, & MORE!



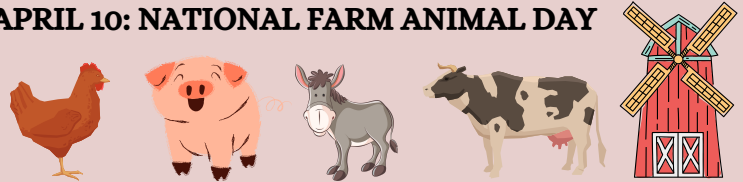
**WEDNESDAYS  
FROM 9AM-4PM ON  
THE UNION PATIO!**

## APRIL'S WACKY HOLIDAYS

APRIL 6: PLAN YOUR EPITAPH DAY



APRIL 10: NATIONAL FARM ANIMAL DAY



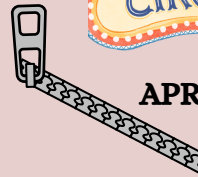
APRIL 18: NATIONAL HIGH FIVE DAY



APRIL 20: WORLD CIRCUS DAY



APRIL 29: NATIONAL ZIPPER DAY



## Catering Affiliates



If you would like to order Dunkin Donuts or Chick-Fil-A on campus (they are affiliated with Aramark) reach out to Debbie Bahr. She is the administrative professional. Debbie is also the one that you reach out to for meal vouchers. Panera will be added soon, they did not give a timeframe or date. We will keep you posted.

### SURVIVAL TIP

TO START A NEW EMAIL WHILE IN OUTLOOK PRESS CTRL +N AND A NEW EMAIL WINDOW WILL POP UP.  
(CMD +N ON MAC)

NOTE: CTRL+N WILL OPEN A NEW WINDOW IN AN EMAIL BROWSER

HOW CAN YOU TELL IT'S A DOGWOOD TREE?

BY THE BARK



Need help or have a question? [ASACHelpline@jmu.edu](mailto:ASACHelpline@jmu.edu)

# CALENDAR OF EVENTS

**APRIL 23**  
**8AM-5PM**

**BALANCED DUKES CONFERENCE**  
*Come and explore the various dimensions of wellness.*

*Registration and Session Info found [here](#).*

**MAY 3,4,5**  
**FRI, SAT, SUN**

**Anastasia - The Musical**  
*Mountain View High School*  
*Quicksburg, VA*

**MAY 9-11**  
**THURS-SAT**

**SPRING COMMENCEMENT**  
*All college ceremonies held in the Atlantic Union Bank Center.*

**MAY 16**

**SAVE THE DATE!**  
**EMPLOYEE APPRECIATION DAY**

*A day designed to show that your contribution to JMU is recognized, appreciated, and celebrated.*

**MAY 21**  
**3-4:30 PM**

**CONNECT & LEARN**  
**Pathways Room, Wine-Price**

*New Admins - Tell us about your experiences & let us know what worked and what didn't*

**Want to publicize a campus event? Email us at [aaasacnews@jmu.edu](mailto:aaasacnews@jmu.edu).**