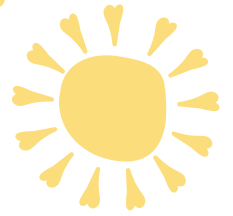




AAASAC MONTHLY NEWSLETTER



MAY 2024

JMU Dining Summer Hours

JMU Dining announced summer operating hours for May 20-July 21!



- **Panera:** Mon. - Fri. 8am-1:30pm
- **Chick-Fil-A (1st Floor D-Hall):**
Mon. - Thurs. 11am-2pm
- **Chips:** Mon. - Fri. 8am-2pm
- **Subway (Grace Street):** Mon. - Thurs.
11am-1:30pm
- **Starbucks Truck:** Mon. - Fri. 8am-12pm



FACULTY/STAFF CLUBS

DID YOU KNOW ABOUT THE MANY FACULTY & STAFF CLUBS THAT ARE AVAILABLE HERE AT JMU?? THESE CLUBS ARE MEANT TO ENCOURAGE ENGAGEMENT & COMMUNITY AMONG FACULTY & STAFF.

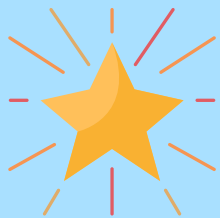


CURRENT OPTIONS INCLUDE:

- ADULT FANS OF LEGO
- FOODIES READ
- PICKLEBALL
- UNWIND
- WALKING GROUPS



FOR MORE INFO, CHECK OUT THIS **LINK**.



PROVOST AWARD FOR ADMINISTRATIVE EXCELLENCE 2023-2024 WINNERS



Congratulations to our Award Winners

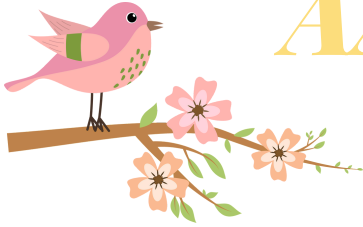
KATHY LUBKOWSKI -- OFFICE MANAGER IN THE COLLEGE OF INTEGRATED SCIENCE AND ENGINEERIN. KATHY WAS ACKNOWLEDGED BY HER NOMINATORS AS "THE ULTIMATE TEAM PLAYER" AND THE "LINCHPIN FOR ADMINISTRATIVE TEAMWORK THROUGHOUT CISE AND BEYOND."

SHEILA WARD -- PROGRAM SUPPORT TECHNICIAN FOR THE EDUCATIONAL FOUNDATIONS AND EXCEPTIONALITIES DEPARTMENT (EFEX). SHEILA IS KNOWN AS AN ESSENTIAL MEMBER OF THE EFEX TEAM WHOSE EXPERIENCE, LEADERSHIP AND WARM PERSONALITY CREATE AN IDEAL WORKING ENVIRONMENT THAT FOSTERS PRODUCTIVITY AND POSITIVE RELATIONSHIPS.

Need help or have a question? ASACHelpline@jmu.edu

AAASAC MONTHLY NEWSLETTER

MAY 2024



UREC SUMMER HOURS

Before heading to UREC for your summer workout, make sure to review the updated summer hours. Although summer has reduced hours, UREC should be less crowded and you should be able to enjoy a great workout.

UREC
MONDAY - THURSDAY: 11 A.M. - 9 P.M.
FRIDAY: 11 A.M. - 7 P.M.
SATURDAY: 11 A.M. - 4 P.M.
SUNDAY: 4 - 9 P.M.



MAY'S WACKY HOLIDAYS

MAY 4: STAR WARS DAY



MAY 11: EAT WHAT YOU WANT DAY



MAY 8: NO SOCKS DAY



MAY 16: MIMOSA DAY



MAY 24: INTERNATIONAL TIARA DAY



Catering Affiliates



If you would like to order Dunkin Donuts or Chick-Fil-A on campus (they are affiliated with Aramark) reach out to Debbie Bahr. She is the administrative professional. Debbie is also the one that you reach out to for meal vouchers. Panera will be added soon, they did not give a timeframe or date. We will keep you posted.

SURVIVAL TIP

ADOBE SHORTCUTS
CTRL + TAB: MOVE TO NEXT TAB
CTRL+SHIFT+TAB : MOVE BACK ONE TAB)
CTRL+P: PRINT
CTRL O : OPEN CTRL
NOTE: CTRL+N WILL OPEN A NEW WINDOW IN AN EMAIL BROWSER

WHAT DID THE OCEAN SAY TO THE BEACH?
NOTHING.
IT JUST WAVED.



Need help or have a question? ASACHelpline@jmu.edu