

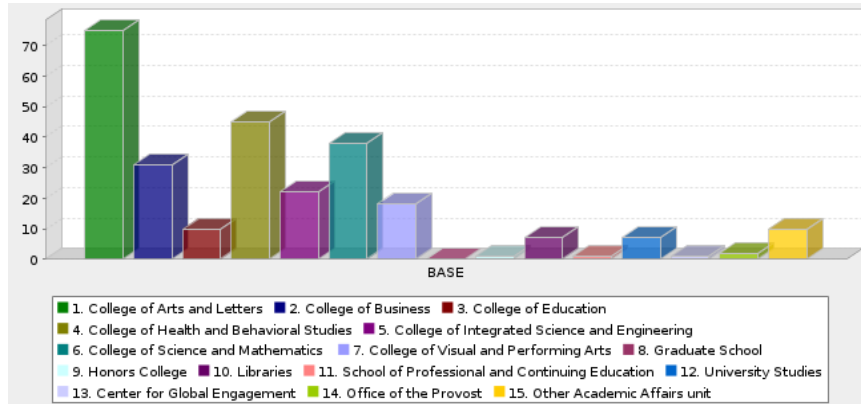
Summary of Survey Results

Core Curriculum Appraisal Task Force

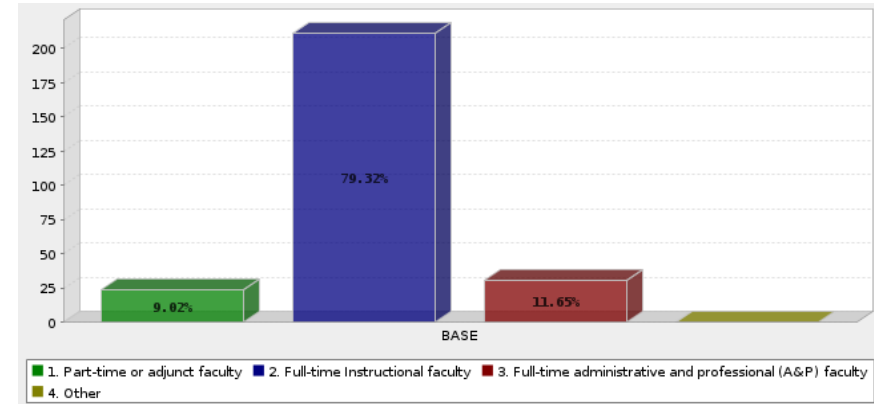
Spring 2023

Total responses	280
Completed	207
Incomplete	73

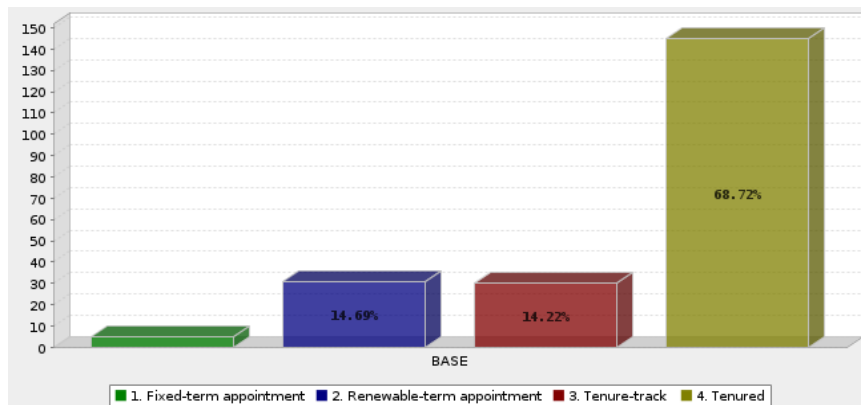
Area of Primary Affiliation



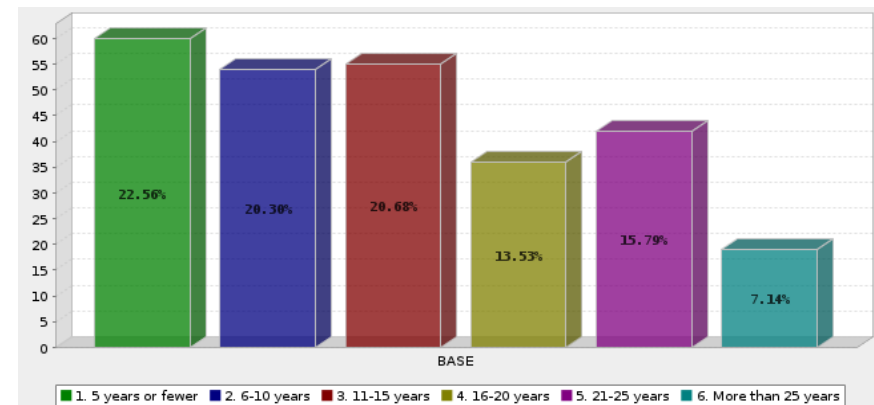
Role



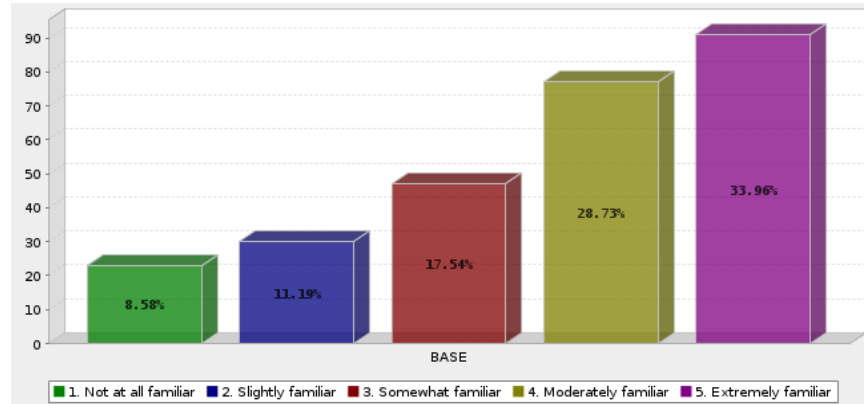
Appointment Type



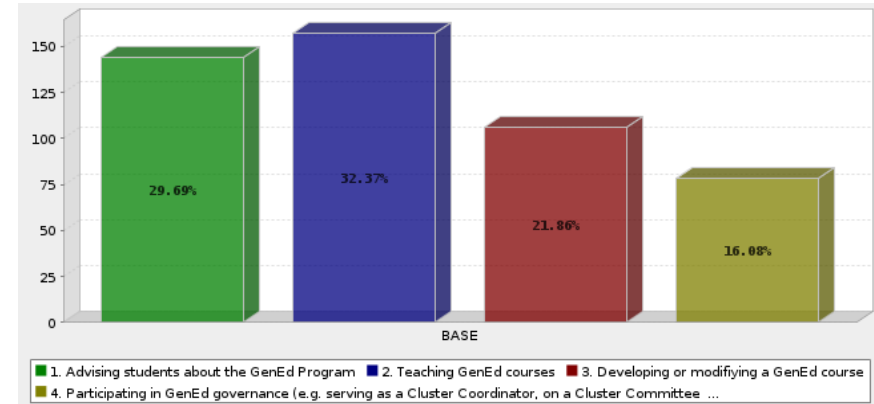
Number of Years Served



Familiarity with General Education (GE)



Ways of Interaction with GE



What an Ideal GE Program Would Prioritize and Accomplish

(1 = Not important, 2 = Somewhat important, 3 = Very important)

1) The structure and content of a GE curriculum should reflect the university's mission.

Mean = 2.49

2) A GE curriculum should be built around common learning outcomes.

Mean = 2.46

3) A GE curriculum should contribute to students' development of mindsets, aptitudes and dispositions.

Mean = 2.80

4) A GE curriculum should be relevant to students' lives.

Mean = 2.47

5) A GE curriculum should promote a sense of belonging through shared experiences and an inclusive mission.

Mean = 2.24

A GE curriculum is a set of requirements largely separate from the rest of a student's undergraduate experience.

Strongly disagree	32.1%
Disagree	44.3%
Neutral	11.8%
Agree	10.2%
Strongly agree	1.6%

Common Purposes of GE Programs and Their Importance

(1 = least important, 3 = most important)

- 1) Build knowledge and skills for global citizenship through liberal arts education. Mean rank = 2.69
- 2) Prepare students for coursework in their majors. Mean rank = 1.70
- 3) Prepare students for careers. Mean rank = 1.61

The Human Community: Satisfaction

(1 = Strongly disagree, 2 = Disagree, 3 = Neutral, 4 = Agree, 5 = Strongly agree)

1) I am satisfied with the level of intellectual challenge provided in the program's courses.

Mean = 3.26 (26.7% indicated "no basis to judge")

2) I am satisfied with the level of student engagement in the program's courses.

Mean = 2.58 (24.0% indicated "no basis to judge")

3) Overall, I am satisfied with the quality of the program.

Mean = 3.22 (18.9% indicated "no basis to judge")

4) Overall, I am satisfied with the curricular structure of the program.

Mean = 3.26 (14.8% indicated "no basis to judge")

5) Overall, I am satisfied with the administrative structure of the program.

Mean = 2.79 (24.0% indicated "no basis to judge")

The Human Community: Outcomes

(1 = Strongly disagree, 2 = Disagree, 3 = Neutral, 4 = Agree, 5 = Strongly agree)

1) I believe the program prepares students to be informed citizens who are able to participate in public life and public decision-making.

Mean = 3.38 (18.2% indicated “no basis to judge”)

2) I believe the program prepares students in critical thinking skills.

Mean = 3.39 (18.2% indicated “no basis to judge”)

3) I believe the program prepares students in communication skills.

Mean = 3.44 (20.1% indicated “no basis to judge”)

4) I believe the program prepares students in information literacy.

Mean = 3.23 (21.0% indicated “no basis to judge”)

The Human Community: Outcomes (cont.)

(1 = Strongly disagree, 2 = Disagree, 3 = Neutral, 4 = Agree, 5 = Strongly agree)

5) I believe the program prepares students to appreciate the Arts and Humanities as an essential component of the human experience.

Mean = 3.44 (24.8% indicated “no basis to judge”)

6) I believe the program develops students’ awareness of both physical and emotional wellness.

Mean = 3.32 (29.0% indicated “no basis to judge”)

7) I believe the program develops students’ problem-solving skills in science and mathematics.

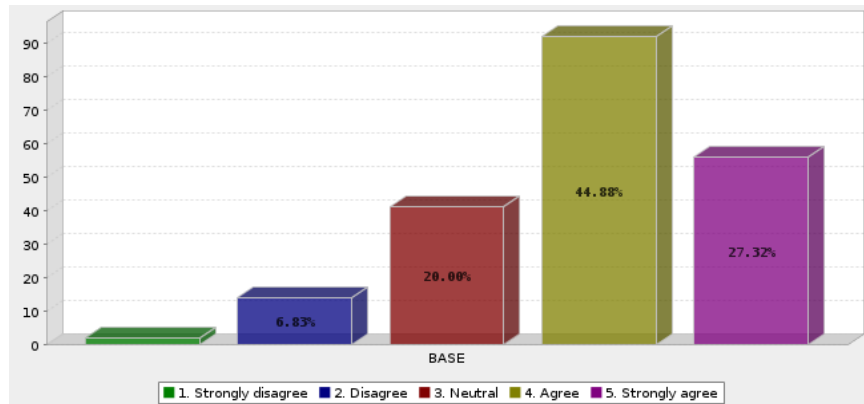
Mean = 3.21 (27.6% indicated “no basis to judge”)

Priorities for GE Renewal

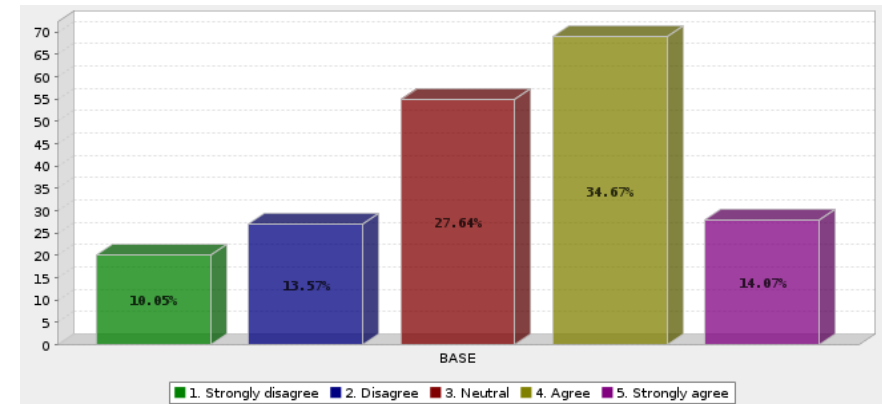
(1 = least important, 3 = most important)

- 1) Better incorporate contemporary expectations for the liberal arts and sciences into the GE curriculum. Mean rank = 1.89
- 2) Expand communication and messaging about the GE program's role in JMU's unique blend of liberal arts, research, and professional education. Mean rank = 1.73
- 3) Analyze staffing levels and plan for possible growth in full-time instructional positions to support the needs of our GE program. Mean rank = 2.39

The JMU mission, “We are a community committed to preparing students to be educated and enlightened citizens who lead productive and meaningful lives,” should set the direction for the renewed GE program.



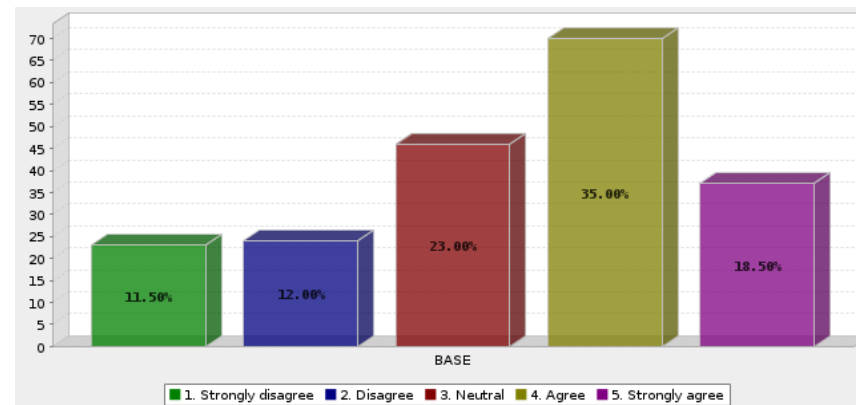
The JMU Vision, “To be the national model for the engaged university: engaged with ideas and the world,” should set the direction for the renewed GE program.



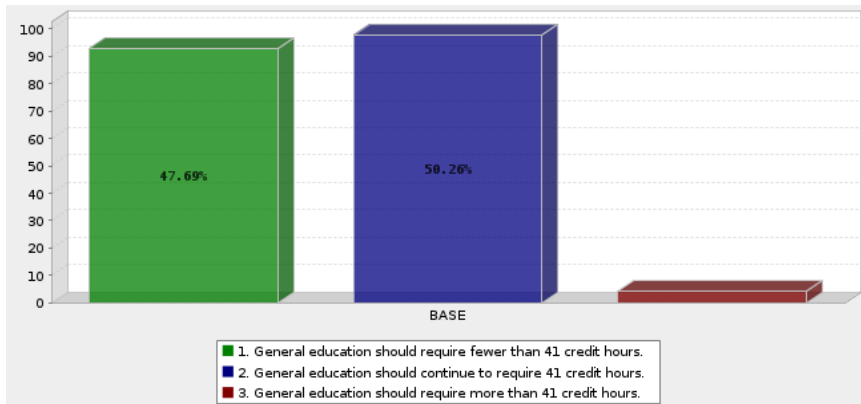
The JMU GE Program's Mission (updated in 2021) reads:

In the Liberal Arts tradition, General Education: The Human Community aspires to create informed global citizens of the 21st century. James Madison University's General Education program is committed to creating an equitable and inclusive academic environment for all persons. We affirm that equity advances understanding and is integral to a Liberal Arts education. We acknowledge the history of exclusion and inequity nationally and at James Madison University. We embrace the process of making JMU's General Education program accessible, affirming, and action-oriented. By placing inclusion and equity at the center of our mission, we seek to implement strategies and diversity policies that reimagine the relevance of a liberal arts education. We challenge our community of students, faculty, and staff to engage in personal and collective reflection, development, and action.

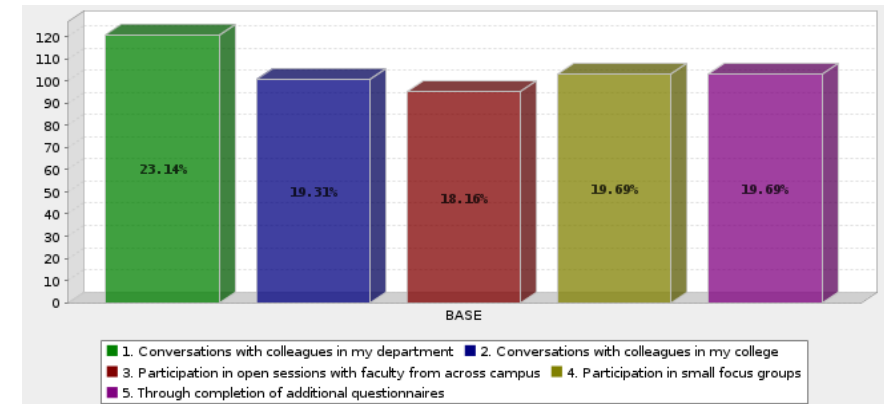
This mission should set the direction for the renewed GE program.



JMU's accrediting body requires a GE program of at least 30 credit hours. The current curriculum at JMU is 41 credit hours. Which statement below best characterizes your preference for the next iteration of GE at JMU?



The Core Curriculum Appraisal Task Force will continue to solicit faculty input and to organize opportunities for local and campus-wide discussions about GE renewal. In what ways do you prefer to participate in the GE renewal process?



Responses to Open-Ended Questions

The following themes have been extracted from responses to the open-ended questions.

STRENGTHS

1. Emphasis on Written and Oral Communication Skills
2. Variety of Course Offerings Across Disciplines
3. Based on Learning Outcomes
4. Opportunity for Interdisciplinary Connections

OPPORTUNITIES

1. Data and Information Literacy
2. Computer Technology Knowledge/Applications
3. Exposure to Artificial Intelligence Education
4. Senior Capstone/Portfolio Requirement
5. Emphasis on Democratic Process

CHALLENGES

1. Lack of Courses on Sociocultural Diversity
2. Understaffed/Under funded
3. Student Disengagement
4. Outdated Curriculum for Today's Generation
5. Administrative Distrust

(end of report)