

Racial Disparities in Behavioral Health Recommendations Within the Juvenile Justice System

Makaela Parker

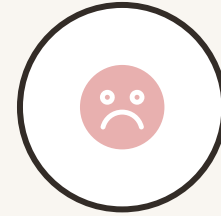


Why I Chose This Topic



Interest in Mental Health

65 - 70% of youth in the juvenile justice system meet the criteria for at least one diagnosable mental health disorder (Shuflet & Cocozza 2006)

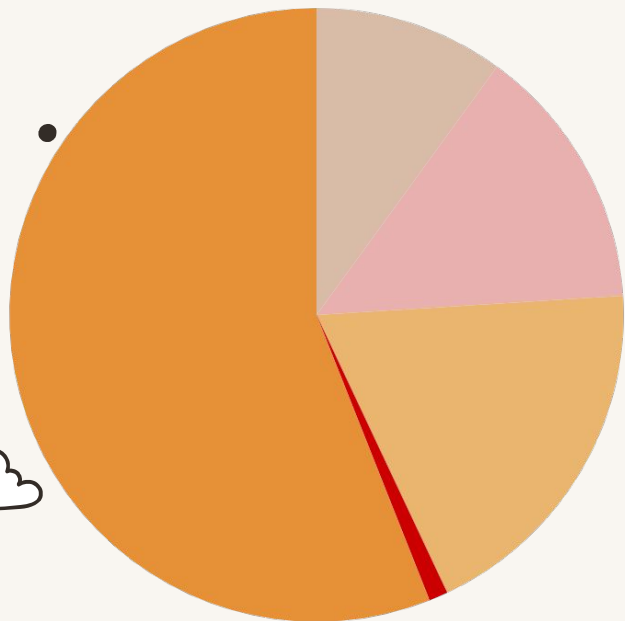


Interest in racial disparities in the JJS

Racial disparities are a well known problem in the adult and juvenile justice systems in America



Racial Disparities in King County (2022)



10%
Asian/Pacific Islander

56%
White

14%
Hispanic/Latinx

10%
Black

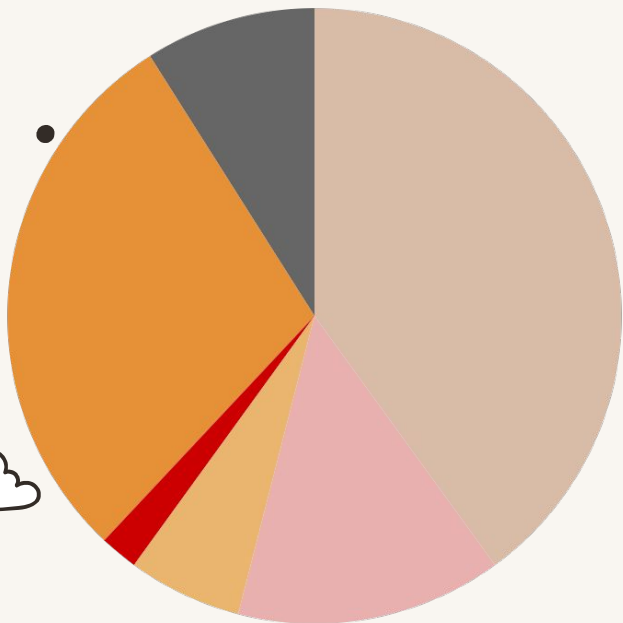
1%
Native American

2020 King County Population Age 10-17

Jovi Catena, King
County Juvenile Court
Services



Racial Disparities in King County (2022)



6%
Asian/Pacific
Islander

29%
White

14%

40%

Hispanic/Latinx

Black

2%

9%

Native American

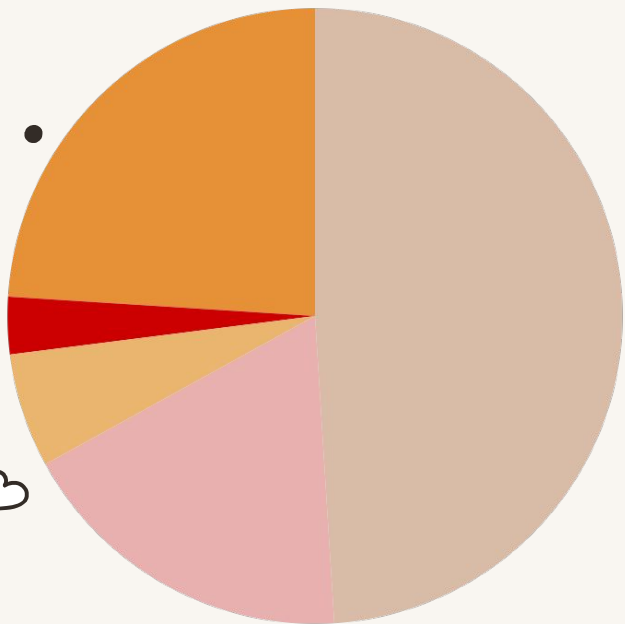
Other/Unknown

2022 Referrals

Jovi Catena, King
County Juvenile Court
Services



Racial Disparities in King County (2022)



6%
**Asian/Pacific
Islander**

18%
Hispanic/Latinx

3%
Native American

24%
White

49%
Black



2022 Filings

Jovi Catena, King
County Juvenile Court
Services

01

Mental Health of Kids of Color



Youth of Color can experience different levels of trauma often as a result of their homelife and neighborhoods

- Under-resourced environments
- Growing up in neighborhoods associated with the “hood” or the “ghetto”
- Lack of access to adequate resources
- Unhealthy family environments



02

+

Youth - adult Connections

+



Lack of Supportive Relationships



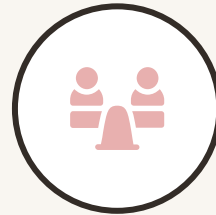
Lack of parental supervision



Lack of nurturing relationship between parent & child



Child becomes a burden to parent



Healthy adult-child relationships



Opara et al., 2020

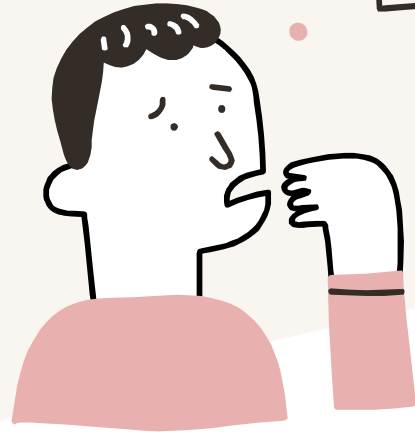


03

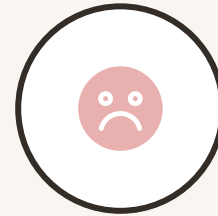
+

Community Trauma

+



Community Trauma

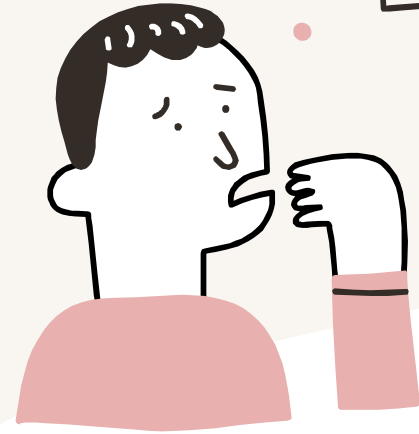


Desensitization of Violence Environmental Stressors

Youth normalizing violence becomes a problem. They see it everyday so they see it as a normal event

Environmental stressors lead kids into have a particular risk of mental health disorders

04
Lack of
Referrals to
Mental Health
Services+

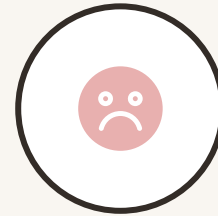


Lack of Referrals



Systemic

There are systemic reasons that there are less mental health referrals for kids of color in the JJS



Personal Bias

Personal bias is a large factor in why there are a lack of mental health referrals in the JJS

05

Promising
Practices in
King County

+



JTRAC: Juvenile Therapeutic Response and Accountability Court

- The purpose of JTRAC is to improve outcomes for youth and families by connecting them with timely, appropriate interventions that build strengths, foster desistance, and reduce contact with the criminal legal system.



3 Critical Priorities



Early Screening Support

Early screening support consists of screening tools and needs assessments



Community Centered Approach

Youth and families are connected with community support that the court has developed or supports through partnerships



Positive Youth Justice

Positive youth justice uses incentive based supervision to promote behavior change

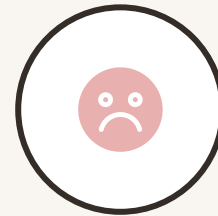


Other Promising Practices in King County



Universal Screening

All youth that enter the King County Juvenile Court are screened for behavioral health needs



JJAT: Juvenile Justice Assessment Team

The team that handles the longer assessments for the King County Juvenile Court

Thanks!

Do you have any questions?
[makaelparker1@gmail.com](mailto:makaelaparker1@gmail.com) | (540) 519-8081



CREDITS: This presentation template was created by **Slidesgo**, including icons by **Flaticon** and infographics & images by **Freepik**

Please keep this slide for attribution



