



Research, Economic Development
and Innovation

**Supporting Your Research, Scholarship,
and Creative Endeavors**

April 17, 2024

Today, we will..

Provide an overview of:

- Who we are (organizational structure).
- What we do.
- How we support and provide services.
- Answer questions that we can and collect questions that we cannot quite answer yet.

TL/DR:

- The research part of REDI is only ONE part of our charge.
- Our main objective is to support and serve in the areas of Research, Economic Development, and Innovation
- Colleges and Units set research priorities for their areas, not REDI.
- REDI does not directly (financially) incentivize research, but we can help you think creatively about how you can!

The mission of Research, Economic Development and Innovation (REDI) is to serve and support faculty and student research and scholarship, serve as an agent and advocate for faculty and student interests, and locate and secure resources, partnerships and collaborations that will move JMU's vision and mission forward.

Research, Economic Development and Innovation (REDI) utilizes an **interdisciplinary** and **applied** approach to facilitate the engagement of faculty, staff and students to develop solutions to institutional and real-world problems. An enterprise-wide research agenda guides the strategic objectives of academic initiatives and illustrates the value placed on collaboration and creative endeavors to address major issues facing society while enhancing regional economic development. REDI is spearheading the creation of an innovation ecosystem that balances academic program excellence with cutting-edge research.

REDI Leadership



Research, Economic
Development & Innovation



Dr. Anthony Tongen

Vice President REDI,

Professor of Mathematics
& Statistics



Dr. Besi Muhonja

AVP Research and Scholarship,

Professor of African, African
American & Diaspora (AAAD)
Studies and Women's, Gender &
Sexuality Studies



Dr. Keith Holland

AVP Research and Economic
Development,

Professor of Engineering



Dr. Patrice Ludwig

AVP Research and Innovation,

Associate Professor of Biology



Research, Economic
Development & Innovation

REDI Leadership: Directors



Mr. Ben Delp

Director, Federal
Relations and
Communications



**Ms. Carolyn
Strong**

Director, Office of
Research Integrity



**Ms. Tamara
Hatch**

Director, Office of
Sponsored
Programs



Ms. Becky Rohlf

Director, Business
Operations



Research, Economic
Development & Innovation

REDI College Liaisons



Dr. Melinda Adams

College of Arts and
Letters



Dr. BJ Bryson

College of Health
and Behavioral
Studies



Dr. Scott Gallagher

College of Business



**Dr. Kathryn
Nusa Logan**

College of Visual
and Performing
Arts



**Dr. Fawn-Amber
Montoya**

Associate Dean,
Honors



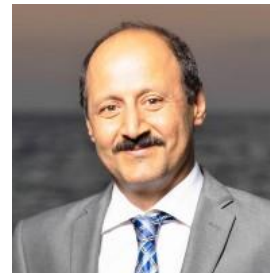
**Dr. Yasmeen
Shorish**

Libraries



**Dr. Steve
Whitmeyer**

College of
Science and
Mathematics



**Dr. Afzal
Upal**

College of
Integrated
Science and
Engineering



**Dr. Bryan
Zugelder**

College of
Education



Research, Economic
Development & Innovation

REDI Unit Overview

Support and Service

■ Faculty and Student Support

- Faculty scholarship, student research, student fellowships (Fulbright), innovation and collaboration across the institution, institutes and centers, intellectual property, interdisciplinary projects

■ External Funding

- Funding opportunities, proposal development, state-wide initiatives, federal agencies

■ Compliance

- Human subject research (IRB), animal subject research (IACUC), financial conflict of interest, biosafety, export controls, KSI software

■ External Relations and Communications

- Industry partnerships, federal relations, economic development, advisory groups, newsletters, social media, R2 status

■ Inclusive Excellence

- All activities in REDI are viewed through the lens of inclusive excellence.



Research, Economic
Development & Innovation

Associate Vice President for Research and Scholarship

- Scholarship and Research Support: Interdisciplinary research initiative identification and coordination
- Research Development
- Strategic Global Engagement in Research
- Inclusive Excellence: Leadership in realizing IE best practices in REDI
- Office of Research Integrity
- Office of Sponsored Programs
- Office of International Research Services

Research and Scholarship
Associate Vice President
Dr. Besi Muhonja

Administrative Assistant

Office of Sponsored
Programs (OSP)

Office of Research
Integrity (ORI)

Research Development

International Research
Services

Inclusive Excellence

Center for International
Stabilization & Recovery
(CISR)

Office of Sponsored Programs (OSP)

Director
Tamara Hatch

Administrative Services, OSP

Associate Director, Admin Services
Sally Dickenson

Grants Specialists
Brent Arehart
Riley Parker
Hoan Tran

Financial Services, OSP

Assistant Director, Financial Services
Donna Crumpton

Financial Administrators Senior
Kyra Shiflet
Carmen Witmer

Financial Administrator
Kelly Hill

Office of Research Integrity

Director
Carolyn Strong

Associate Director
Carrie Tillman

Research Compliance Manager
Cindy Morgan

Vivarium and Lab Safety

Attending Veterinarian
Dr. Annette Hildabrand

Vivarium and Lab Safety Manager
Mike Love

Vivarium and Lab Safety Assistant
Jessica Herring

Animal Care Technicians
Sarah Keegan
Stephanie Atkins
Heather Honeycutt

Research Development

Director of Research Development
(Search ongoing)

Assistant Director of Research Development

Eight (8) College Research Development Associates

International Research Services

Head of International Research Services
(Search ongoing)

Inclusive Excellence

Head of Inclusive Excellence
Tiffany Brutus

Center for International Stabilization and Recovery

Director
Suzanne Fiederlein

Operations & Programs

Assistant Director
Nicole Neitzey

Office Operations Manager
Carolyn Firkin

Program/Financial Assistant
Letitia Turner

Senior Manager, Programs
Amy Czajkowski

Project & Program Specialist
Adrienne Harman-Griggs

Doctoral Assistant
Emily Irungu

Graduate Assistant
Charlie Eichelman

Graduate Intern
Tochukwu Emmanuel Ngwu

Student Research Assistant
Zoe Moser

Intern
Nicole Capaldo

JMU Faculty & Staff
FKD Fellows (3)

Publications

Communications and Publications Manager
Heather Holsinger

Managing Editor
Jennifer Risser

Communications and Publications Specialist
Blake Williamson

Assistant Editor
Sabryn Hebert

Research Development (RD)

Strategically supports efforts by JMU constituents related to pursuing external funding.

■ Research Development Functions:

- Strengthening the Madison Research Club where JMU communities enjoy programs and networking opportunities;
- Strategizing college-specific research development initiatives and support;
- Catalyzing international RD and support;
- Incentivizing faculty participation in RD;
- Forecasting funding opportunities;
- Assembling grant convergence teams.

Contact Us:

- Email: researchdevelopment@jmu.edu
- Foundation Hall, 2nd Floor / 1031 Harrison St., MSC 4107



Office of Sponsored Programs (OSP)

- Administrative (pre-award) activities:
 - Reviews funding opportunities for eligibility and fit
 - Reviews agency guidelines and assists with the overall proposal submission process (including budget development)
 - Negotiates sponsor agreements, relationships, and award terms and conditions
 - Interprets and enforces the regulatory, contractual, and administrative requirements
 - Serves as the liaison with sponsors
 - Processes post-award amendments such as no-cost extensions, budget revisions, change of scope and personnel changes
- Finance (post-award) activities:
 - Issues Department, notifies the appropriate university offices with an award announcement, and provides award materials to the principal investigator
 - Assists with the financial management of the award
 - Manages effort reporting
 - Invoices sponsors and draws down funding
 - Completes all financial reporting and facilitates closeout

Office of Sponsored Programs - Key Takeaways



Research, Economic
Development & Innovation

Don't apply for funding without university approval

Contact OSP early with guidelines and deadline - "Ask Early, Ask often!"

Let us help you with your budget

Don't sign anything on behalf of the university (application/agreements)

Provide OSP with your final materials 5 business days before deadline

Office of Research Integrity (ORI) (University wide)



Research, Economic
Development & Innovation

JMU JAMES MADISON UNIVERSITY. INFO FOR ▾ Search JMU 🔍

ADMISSIONS ACADEMICS STUDENT LIFE VISIT TUITION & FINANCIAL AID ATHLETICS

Office of Research Integrity

RESEARCH INTEGRITY

ABOUT RESEARCH INTEGRITY ▶

DIVERSITY, EQUITY, AND INCLUSION ▶

ERA ▶

ANIMAL RESEARCH - IACUC ▶

HUMAN SUBJECTS - IRB ▶

BIOSAFETY - IBC ▶

LAB SAFETY ▶

FINANCIAL CONFLICT OF INTEREST ▶

RESPONSIBLE CONDUCT OF RESEARCH ▶

EXPORT CONTROL ▶

RADIATION SAFETY ▶

RESOURCES ▶

FEEDBACK



Important Dates and Deadlines

IRB Protocol Submission Deadline: Friday, April 19, 2024 (to be on the May 7, 2024 meeting agenda)

Please note: The submission deadline is only for those studies requiring **Full Board** review. Exempt and Expedited studies are accepted on a rolling basis.

IACUC Protocol Submission Deadline: Friday, April 19, 2024 (to be on the May 6, 2024 meeting agenda)

Please note: The submission deadline is only for those studies requiring **Full Committee** review.

IBC Meeting: TBA

Accessing the electronic Research Administration (eRA) Software System

To submit a protocol:

On-Campus: <https://era.jmu.edu/>

Off-campus: via SSL VPN

For more information on how to submit through eRA or how to access the system remotely, please see the "Submission Procedure" page under the appropriate committee tab on the lefthand navigation.

Training manuals are also available [here](#) (requires JMU eID to access).

University Economic Development

- **Talent** – impart knowledge and prepare individuals as productive participants in the economy and their communities
- **Innovation** – begins with basic research and builds upon knowledge creation to encompass knowledge transfer and application in ways that are useful and relevant to society
- **Place** – how institutions contribute to making attractive, competitive communities—places where people want to live and enjoy life, create and take jobs, raise their families, participate in civic life, and age and retire



Associate Vice President for Research and Economic Development

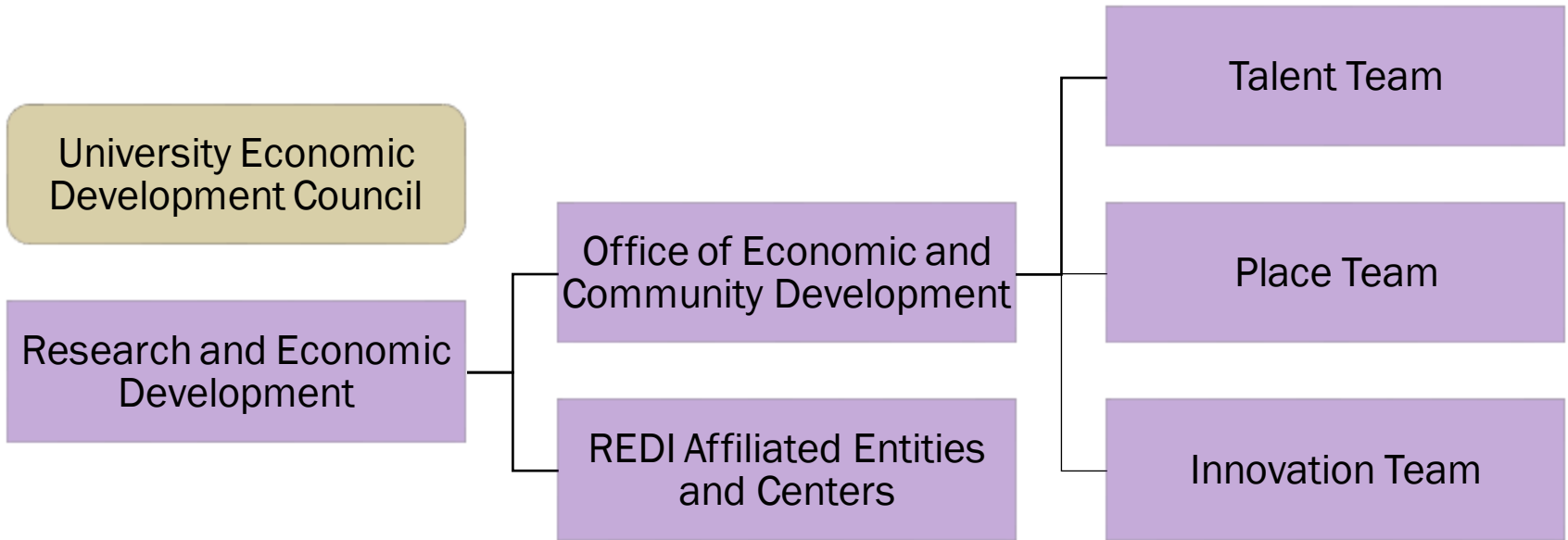


Research, Economic
Development & Innovation

- Economic Development
 - Connect university talent to regional employers
 - Research to economic (broader) impact
 - Contribute to the quality of place in which we live and work
 - Catalyze collaborations that enhance economic vitality and vibrancy in the region

- Academic Institutes and Centers
 - Academic Affairs Policy #1
 - AICs reside in colleges/departments
 - 2 were awarded inaugural Research Center designation
 - Oversight for three AICs and affiliated entities
 - Center for the Advancement of Sustainable Energy
 - Virginia Clean Cities
 - Madison Center for Community Development

Office Structure and Partners

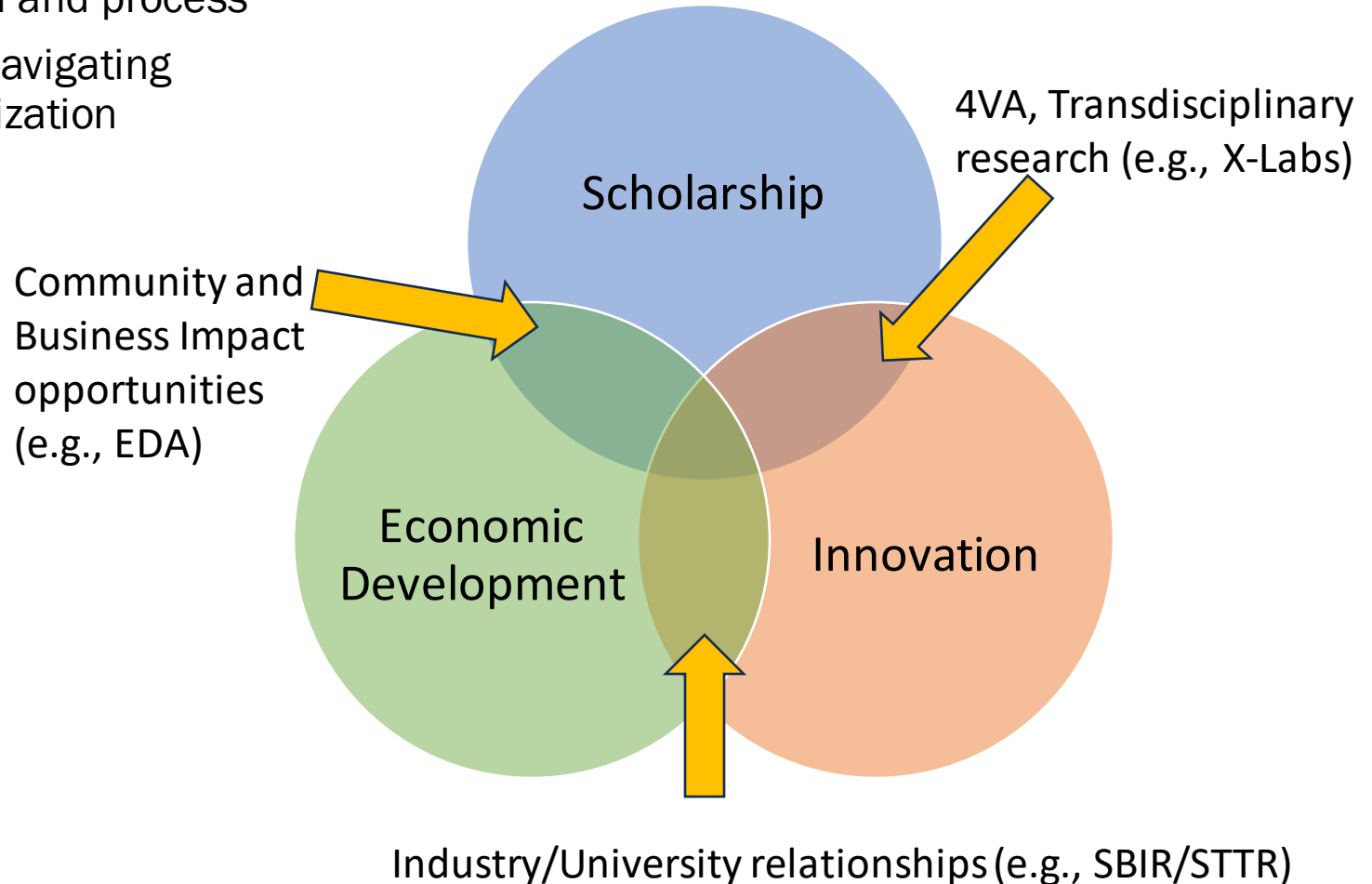


Contact Us:

- Email: econdev@jmu.edu

Research to Impact (TTO)

- Education on JMU's Intellectual Policy #1107
- IP protection and process
- Support in navigating commercialization pathways



Interim Assistant Vice President for Research & Innovation; Campus Coordinator, 4-VA



Research, Economic
Development & Innovation

- Supporting innovation
 - Connect university talent to each other and to external stakeholders
 - Support “experimental” ideas in teaching and scholarship
 - Broaden the idea of research and scholarship to compliment existing activities
- X-Labs
 - Transdisciplinary teaching and scholarship with externally facing partnerships
- Student Awards Initiatives and Research (STAIR)
 - Support student research (ESCAR)
 - Support student fellowship and award applications (OFA)
- 4-VA
 - Supporting state-level and university-level priorities through initial and scale-up funding
- Industry research partnerships
 - Collaborate with Office of Corporate and Foundation Relations (Carrie Combs)
 - Collaborate with Office of Economic Development (Keith Holland)



Research, Economic
Development & Innovation

4-VA Campus Coordinator



About ▾ 4 Initiatives ▾ Grant Profiles RFPs ▾ Contact

	GMU	JMU	ODU	UVA	VCU	VMI	VT	WM
--	-----	-----	-----	-----	-----	-----	----	----

4-VA at James Madison University You are here: Home / 4-VA at James Madison University



4-VA @ JMU

JMU seeks to advance 4-VA goals by enabling and supporting collaboration and innovation among faculty researchers, organizations, and businesses across the Commonwealth of Virginia. Annually, 4-VA @ JMU offers competitive research collaboration awards to develop and advance scholarly innovation towards implementation.

Originally established in 2015 to implement a section of 4-VA initiatives, [JMU X-Labs](#) now exists as an expanded pan-university facility and idea serving the university, community and external partners. X-Labs pushes the boundaries of traditional teaching and learning models. Its core values and practices lie in cross-disciplinary teaching and research collaborations responding to real-world challenges. X-Labs courses, research, and programs invite wicked problems, partner with industry professionals and community organizations, and provide cutting-edge learning environments to explore innovative solutions to these problems.

[View RFPs](#)

[Website](#)



There have been few times in college where I consistently looked forward to every class, but I always felt motivated not to miss class since we learned so much every week.

Jamie Panko
Political Science

Student Awards, Initiatives, and Research (STAIR)

JMU > REDI

Office of Student Awards, Initiatives, and Research

STUDENT AWARDS, INITIATIVES & RESEARCH

OFFICE OF FELLOWSHIPS & AWARDS

STUDENT CREATIVE ACTIVITIES AND RESEARCH

FIRST YEAR RESEARCH EXPERIENCE

ABOUT US



The Office of Student Awards, Initiatives, and Research (STAIR)

provides targeted resources for research, intellectual growth and professional development to support inclusive excellence for all students at JMU. STAIR houses the Office of Fellowships and Awards (OFA), Student Creative Activities and Research (S-CAR), and other student-based initiatives.

Fellowships ▶

Student Creative Activities and Research ▶

First Year Research Experience ▶

Contact Us ▶



Dr. Klebert Feitosa

Interim Director of the Office of Fellowships and Awards (OFA); Student Awards, Initiatives, and Research (STAIR); Interim Coordinator of Student Creative Activities and Research

JMU X-Labs (Cross-university collaboration)



Research, Economic Development & Innovation

2024 INNOVATION SUMMIT
TUESDAY, APRIL 30, 3:30-6:30

[READ MORE](#)

Fueling innovation through cross-disciplinary collaboration

Our Purpose

We set the stage for innovation by providing a dynamic space for cross-disciplinary collaboration. Curious JMU community members from all majors uncover solutions to real world problems through courses, fellowships, workshops, and other initiatives.

Our Mission and Vision

JMU X-Labs facilitates ecosystems that catalyze and cultivate high-impact engaged learning and research experiences. We innovate by converging transdisciplinary teams, networks, and initiatives that respond to complex and grand challenges. The "X" in JMU X-Labs represents the variables of expertise, lived experiences, disciplines, and our commitment to inclusive excellence.

WE'RE HIRING!

THE REIMAGINED INTERNSHIP



Dr. Connie Frigo
Executive Director

Office of Federal Relations & Communications



Research, Economic
Development & Innovation

■ Federal Relations (university-wide)

- Share JMU accomplishments/updates with congressional offices
- Advocate on behalf of JMU on a variety of federal issues
 - Immigration, Name-Image-Likeness, Department of Education Negotiated Rulemaking
- Manage Congressionally Directed Spending (CDS) request process
- Respond to inquires and facilitate campus visits for elected officials
- Recent Highlights:
 - Early Healthcare Workforce Development project fully funded -- \$1,000,000 through CDS for FY24.
 - Plan and help organize trips to Capital Hill



■ Communications (Research & Scholarship)

- Supervise R&S social media accounts (@JMUResearch)
- Produce a Research Year-in-Review highlight product ([FY23](#)) Assist the VPRS develop talking points and presentations (including for the JMU BoV)
- Develop monthly scholarly Announcements & Opportunities email for faculty
- Update the R&S Website



Research, Economic
Development & Innovation

Thank you!

Questions?

Follow us on social media and visit our websites to connect!

www.jmu.edu/cfi

www.jmu.edu/research



Research, Economic
Development & Innovation

REDI Initiatives

1. Increase collaborations and partnerships between faculty, other universities, community and industry
2. Raise our presence and influence with Virginia's Congressional Delegation and key Federal officials through targeted collaborations
3. Identify JMU as an economic engine working in partnership with various local and state agencies in the Shenandoah Valley and throughout the Commonwealth to improve the economy of the region
4. Increase advocacy with national organizations focused on public and research policies, science and technology and economic development
5. Foster the creation of university network(s) of researchers across Virginia and between academic institutions
6. Expand international scholarly engagement
7. Increase proposal development across the institution focusing on departments that have traditionally not been involved in sponsored projects
8. Recruit various stakeholders both regionally and across the Commonwealth that will work alongside JMU to advance opportunities for success and national recognition
9. Better identify innovations at JMU and external opportunities that have potential for funding and/or commercialization.
 - **Support of Inclusive Excellence in Research, Economic Development and Innovation**