

Transfer Academic Success & Career Readiness

Jolie Lewis

Director of Transfer Initiatives
University Advising

Libby Westley

Director
University Career Center



Agenda:

- JMU Academics and Advising
- Preparing Your Student to be Career Ready
- Supporting Your Student in the Transition

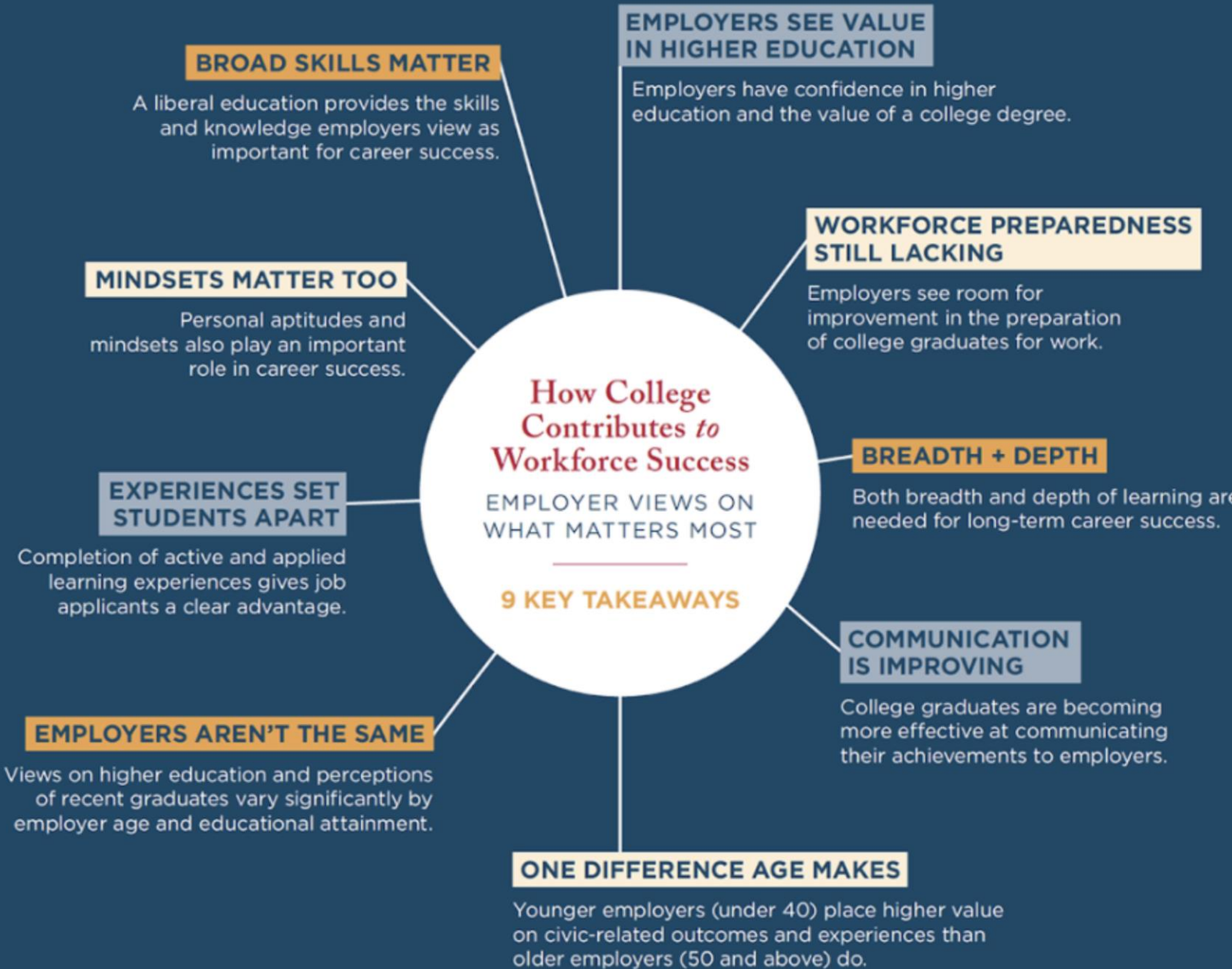
Are You Ready?



- How are **YOU** feeling about your student coming to JMU?
- What are you *excited* about?



Academics at JMU

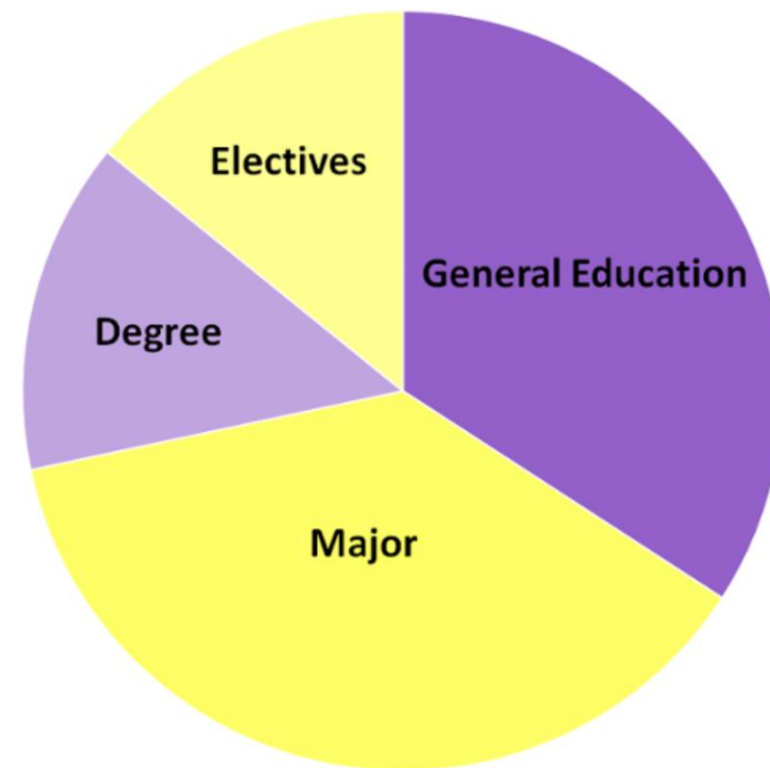


Navigating a Knowledge-Based Economy



Curriculum Overview: JMU Degree Nuts & Bolts

- The four areas of academic requirements
- Other learning also part of JMU's mission:
 - Extracurricular activities
 - Internship opportunities
 - Service learning
 - Student leadership
 - Community engagement (local/abroad)



Choosing a Major

- Transfer students with 30 or more credits must declare a major
- Majors can be open or limited, or have separate admissions requirements
- Transfer students can add a second major or a minor later, and can change their major if they change their mind
- They can meet with exploratory advisors if they are feeling unsure



Navigating Gen Ed (General Education)

- A shared JMU experience
- Unique courses – can explore majors & minors
- 5 areas that focus on outcomes
 - Madison Foundations
 - Arts & Humanities
 - The Natural World
 - Sociocultural and Wellness Area
 - American and Global Perspectives
- Transfer students complete general education requirements course to course or by waiver



Transfer Credit & Transfer Advising

Important Transfer Policies

1) The General Education waiver

- GenEd waived for Virginia community college students with an approved associate degree
- Send transcripts again after associate degree is conferred!

2) Appealing transfer credit

- When a class showing OOO credit may have a JMU equivalent
- Typically, not for Virginia community college classes
- Use the transfer credit reevaluation form
- Syllabus needed

3) The 30-60-120 Rule

- At least 120 credits to graduate, 60 from a 4-year school, 30 from JMU (Technically, it's 50% and 25%)



Transfer Credit
Re-Evaluation Form



Advising & Enrollment Timeline

- Students have been corresponding with their advisor since May 28
- Hopefully, they are enrolled in a full-time fall class schedule of 12-16 credits
- Now is a good time to review schedules for travel time and online classes
- They'll meet with their advisor and other new transfers in their major on Tuesday, Aug. 20 at Weeks of Welcome

Remind your students to send final transcripts

Students must request official and final transcripts from all former institution(s) and have them sent to:

JMU Admissions Office
MSC 0101
100 E. Grace Street
Harrisonburg, VA 22807



Preparing Your Student to be Career Ready!

JMU University
Career Center



Your University Career Center team can help you with:



Resumes
& Cover Letters



Interview Prep
& Practice



Job & Internship
Search



Career Decision
Making



Graduate School
Preparation



Career
Appointments

jmu.edu/career | [@jmucareer](https://twitter.com/jmucareer)





5 Ways to be #CareerReady:



Activate your Handshake account at jmu.joinhandshake.com



Schedule a career advising appointment at least once a year



Attend University Career Fairs every semester



Connect classes to potential career paths



Pursue work-based learning experiences, internships or volunteer work

Scan Me!





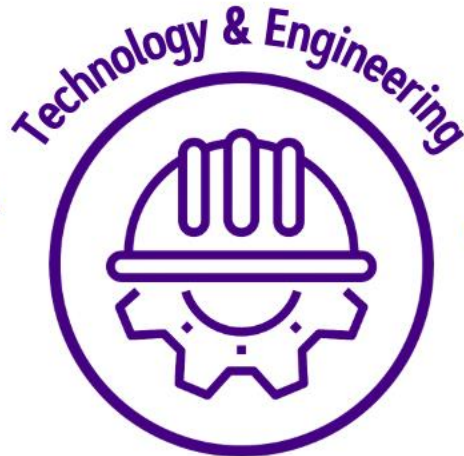
Complete Handshake Profile

- Go to jmu.joinhandshake.com
- Join at least one **career community**
- Register for career fairs, events, workshops
- Schedule career advising appointments
- Sign up for interviews
- Access & apply for job/internship opportunities





Career Communities





Meet with a Career Advisor at least once a year

- Provides individual attention
- Career assessment opportunities
- Mock interviews
- Grad school statement review
- Resume/cover letter advice





Attend University Career Fairs every semester

Every student should

- ✓ Attend each day for 30 minutes
- ✓ Talk to 5 organizations each day

Career fairs are great ways for students to

- ✓ Practice introducing themselves
- ✓ Connect with JMU alumni
- ✓ Learn about career paths
- ✓ Find jobs & internships



University Career Fair

Tuesday 9/24
Wednesday 9/25
1pm – 5pm
Atlantic Union
Bank Center



Campus Partner Career Fairs

JMU

University
Career Center

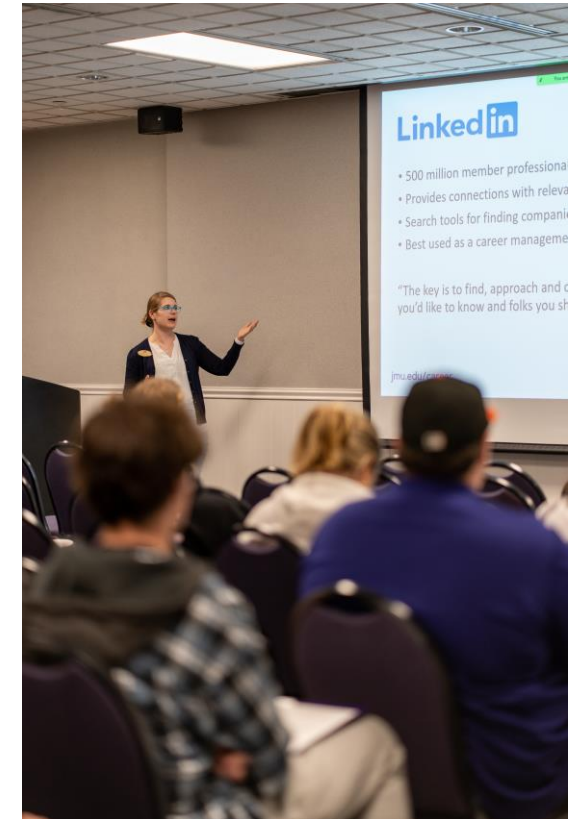


- **College of Integrated Science & Engineering (CISE) Career & Internship Fair:**
Tuesday 9/10 | 11am – 3pm | Festival Ballroom
- **Nurse Recruitment Day**
Thursday 9/5 | 10am - 2pm | Festival Ballroom
- **Hart School (Hospitality, Sport & Recreation Management) Career & Internship Fair:**
Wednesday 11/6 | 10am - 1pm | Festival Ballroom
- Other career fairs: **“Meet the Firms”** (COB students), **Teacher Recruitment Day**



Connect Classes with Careers

- Relate majors, minors, general education and electives to career ideas
- Select paper and project topics related to jobs, industries, and/or career fields
- Include specifics of coursework in elevator pitch
- Apply course learning in internships & involvements
- Identify 3 things they are proud of





Pursue Work-Based Learning Experiences

Types of Work-Based Learning Experiences

- Class projects with an external partner
- Undergraduate research
- Practica
- Clinicals
- Student Teaching
- Internships

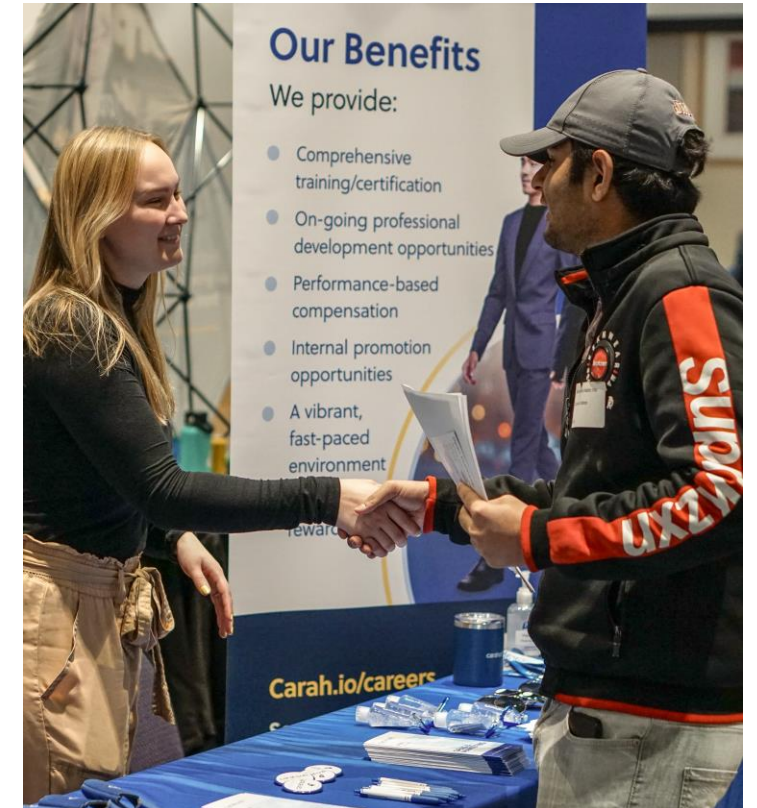




Pursue Work-Based Learning Experiences

Internships

- Provide opportunities to try out career field
- Apply learning from coursework
- Advance career competencies
- Develop a network of career contacts
- Lead to more & better opportunities
- Are often paid
- Can be for academic credit(s)



Bachelor's and Advanced-Degree Recipients

Class of 2023 Career Outcomes Overview

95.4% of Bachelor's and Advanced-Degree Recipients have a Career Outcome

Career Outcome	Bachelor's	Advanced Degree	All Graduates
Working	74.6%	91.6%	76.7%
Continuing Education	20.6%	4.8%	18.7%
Total with a Career Outcome	95.2%	96.4%	95.4%
Still Seeking (employment or education)	4.1%	3.0%	3.9%
Not Seeking (due to life event, travel, etc.)	0.7%	0.6%	0.7%
Total without a Career Outcome	4.8%	3.6%	4.6%

The data reflects knowledge of 3,378 bachelor's-degree recipients and 476 advanced-degree recipients, for a knowledge rate of 74.3%.

Bachelor's-Degree Recipients

Top Employers 2023

1,481 Unique Employers



30+ Hires
Carahsoft Technology Corporation
INOVA
UVA Health

17-29 Hires
Accenture Federal Services
Deloitte
Ernst & Young
Fairfax County Public Schools
James Madison University
KPMG LLP
Sentara
VCU Health System

7-16 Hires	
ADP, Inc.	Huntington Ingalls Industries
ALKU	Insight Global
Bloomberg Industry Group	Leidos
Bon Secours	Lockton Companies
Booz Allen Hamilton	Loudoun County Public Schools
Capital One	MemoryBlue
CGI Federal	Merck & Co., Inc.
Children's Hospital of the King's Daughters	Northrop Grumman
CoStar Group	RSM US LLP
Cvent	Techtronic Industries- TTI
Enterprise Mobility	Thermo Fisher Scientific
Harrisonburg City Public Schools	Walt Disney Company
HCA	



Supporting Your Student

Tips for Family Members

Discuss and ask questions

Encourage your student to:

- Check JMU email daily
- Develop an independent & proactive relationship with their advisor
- Practice resilience and get involved

Ask students how their classes relate to their career ideas.

Have students practice their elevator pitch.





Dukes Career Connections

Fast track your success!



Transfer students! Are you interested in an accelerated start for your career exploration & planning? Join us [August 14-16](#) to learn about how to make yourself more competitive for job/internship searches.

Registration is open NOW:






**University
Advising**

 Roop Hall

 universityadvising@jmu.edu

 (540) 568-7350

 jmu.edu/advising

  @jmuadvising



**University
Career Center**

 Student Success Center 3250

 career@jmu.edu

 (540) 568-6555

 jmu.edu/career

   @jmucareer