

Welcome to First Year Orientation

Dr. Marquis McGee

Director,
University Advising

Libby Westley

Director,
University Career Center



Agenda:

- JMU Academics and Advising
- Preparing Your Student to be Career Ready
- Supporting Your Student in the Transition

Are You Ready?



- How are **YOU** feeling about your student coming to JMU?
- What are you *excited* about?



Academics at JMU



20th Century McGee

- Perceptions of Family Leaving
- Expectations
- No classes
- No next steps
- Hopes & Dreams about the future

Advising at JMU

First-Year Advisor



Major Advisor



Advisor's Role

- Guides academic planning and requirements.
- Aligns decisions with graduation and career goals.
- Connects to campus resources.





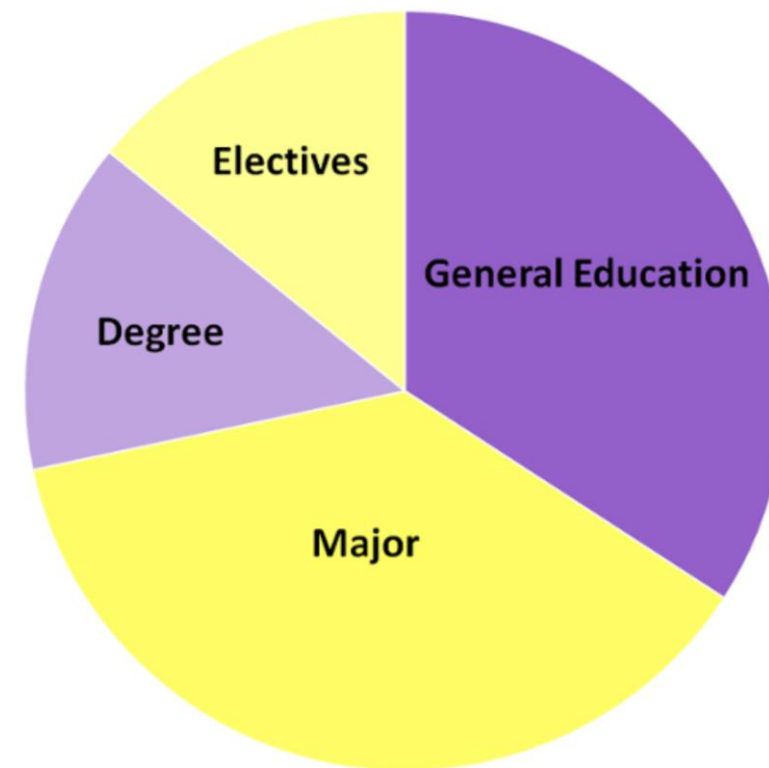
Student's Role

- Understand academic requirements and additional options.
- Choose a major, explore careers, and know your advisor's communication preferences.
- Prepare for meetings, seek support, and ask questions.



Curriculum Overview: JMU Degree Nuts & Bolts

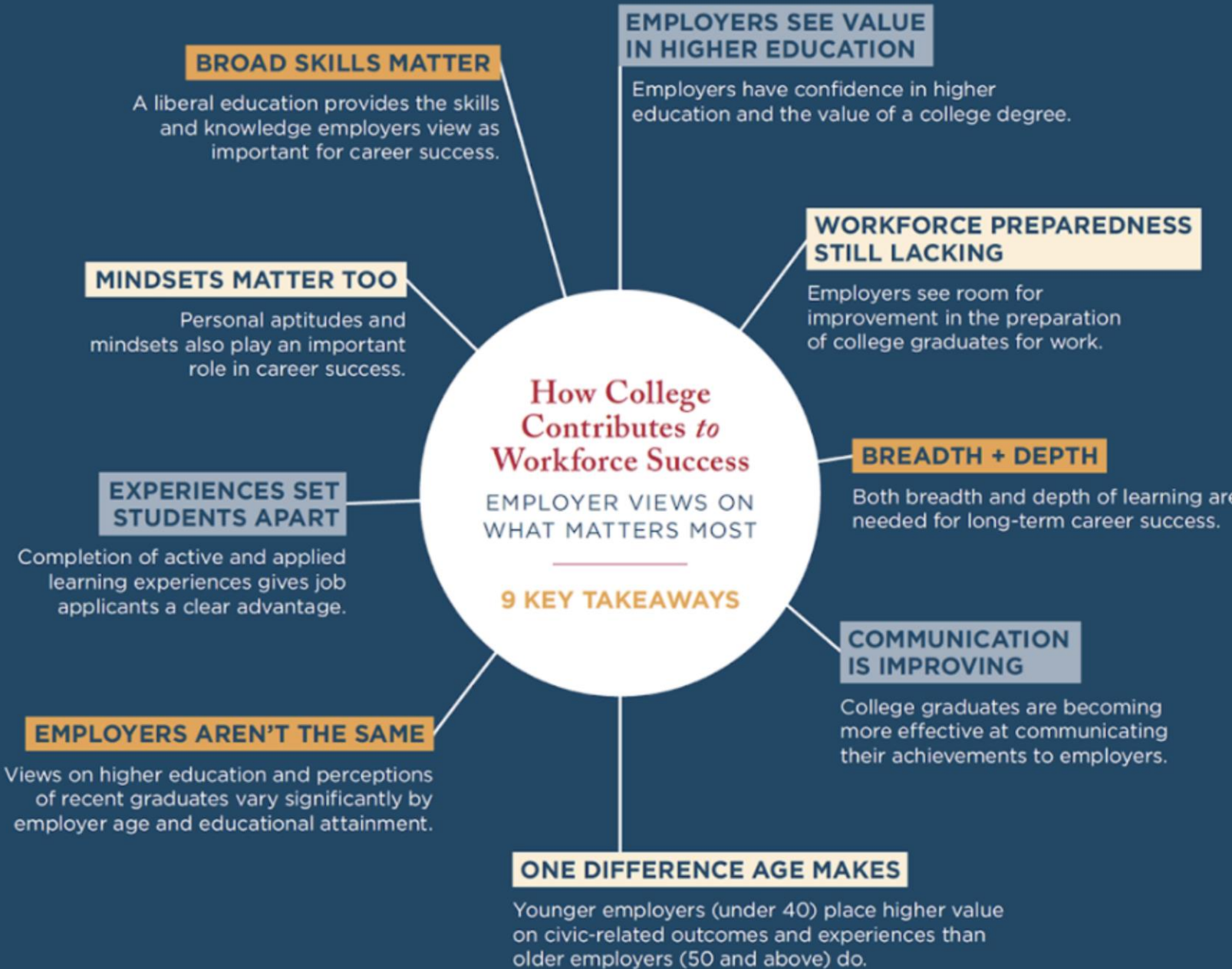
- The four areas of academic requirements
- Extracurricular activities
- Internship opportunities
- Service learning
- Student leadership
- Community engagement (local/abroad)



Navigating Gen Ed (General Education)

- 5 Areas
 - Madison Foundations
 - Arts & Humanities
 - The Natural World
 - American & Global Perspectives
 - Sociocultural and Wellness
- Central to the JMU experience
- Many unique courses





Navigating a Knowledge-Based Economy



Today's Advising Meetings: Focus on Student Success

- Students meet with their First-Year advisor
 - Please reinforce this message for us: At JMU, students are in the driver's seat of their education. They should reach out to their advisor when they need them!
- Content about General Education
- Major specific information
- Transitioning to JMU
- Schedule review
- Opportunities to connect with advisor and peers
- **Open Enrollment: August 1 8:00am**

Preparing Your Student to be Career Ready!

JMU University
Career Center



Your University Career Center team can help you with:



Resumes
& Cover Letters



Interview Prep
& Practice



Job & Internship
Search



Career Decision
Making



Graduate School
Preparation



Career
Appointments

jmu.edu/career | [@jmucareer](https://twitter.com/jmucareer)





5 Ways to be #CareerReady:



Activate your Handshake account at jmu.joinhandshake.com



Schedule a career advising appointment at least once a year



Attend University Career Fairs every semester



Connect classes to potential career paths



Pursue work-based learning experiences, internships or volunteer work

Scan Me!





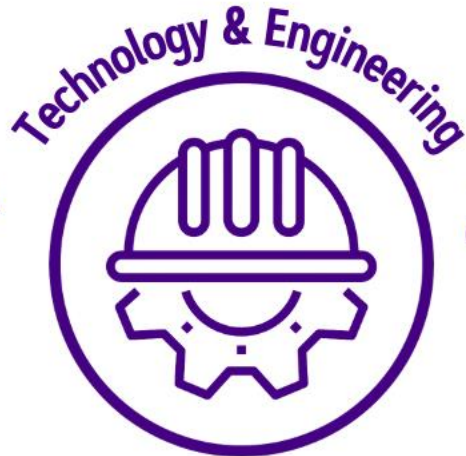
Complete Handshake Profile

- Go to jmu.joinhandshake.com
- Join at least one **career community**
- Register for career fairs, events, workshops
- Schedule career advising appointments
- Sign up for interviews
- Access & apply for job/internship opportunities





Career Communities





Meet with a Career Advisor at least once a year

- Provides individual attention
- Career assessment opportunities
- Mock interviews
- Grad school statement review
- Resume/cover letter advice





Attend University Career Fairs every semester

Every student should

- ✓ Attend each day for 30 minutes
- ✓ Talk to 5 organizations each day

Career fairs are great ways for students to

- ✓ Practice introducing themselves
- ✓ Connect with JMU alumni
- ✓ Learn about career paths
- ✓ Find jobs & internships



University Career Fair

Tuesday 9/24
Wednesday 9/25
1pm – 5pm
Atlantic Union
Bank Center



Campus Partner Career Fairs

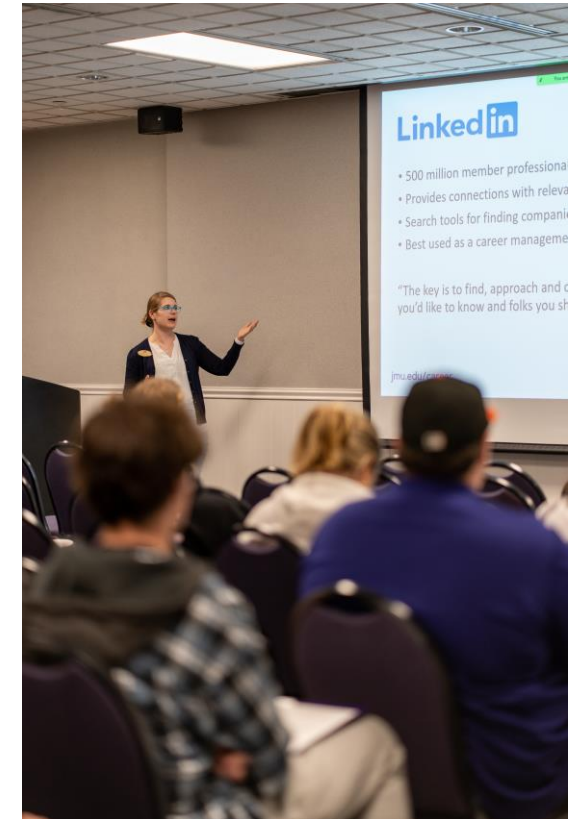


- **College of Integrated Science & Engineering (CISE) Career & Internship Fair:**
Tuesday 9/10 | 11am – 3pm | Festival Ballroom
- **Nurse Recruitment Day**
Thursday 9/5 | 10am - 2pm | Festival Ballroom
- **Hart School (Hospitality, Sport & Recreation Management) Career & Internship Fair:**
Wednesday 11/6 | 10am - 1pm | Festival Ballroom
- Other career fairs: **“Meet the Firms”** (COB students), **Teacher Recruitment Day**



Connect Classes with Careers

- Relate majors, minors, general education and electives to career ideas
- Select paper and project topics related to jobs, industries, and/or career fields
- Include specifics of coursework in elevator pitch
- Apply course learning in internships & involvements
- Identify 3 things they are proud of





Pursue Work-Based Learning Experiences

Types of Work-Based Learning Experiences

- Class projects with an external partner
- Undergraduate research
- Practica
- Clinicals
- Student Teaching
- Internships

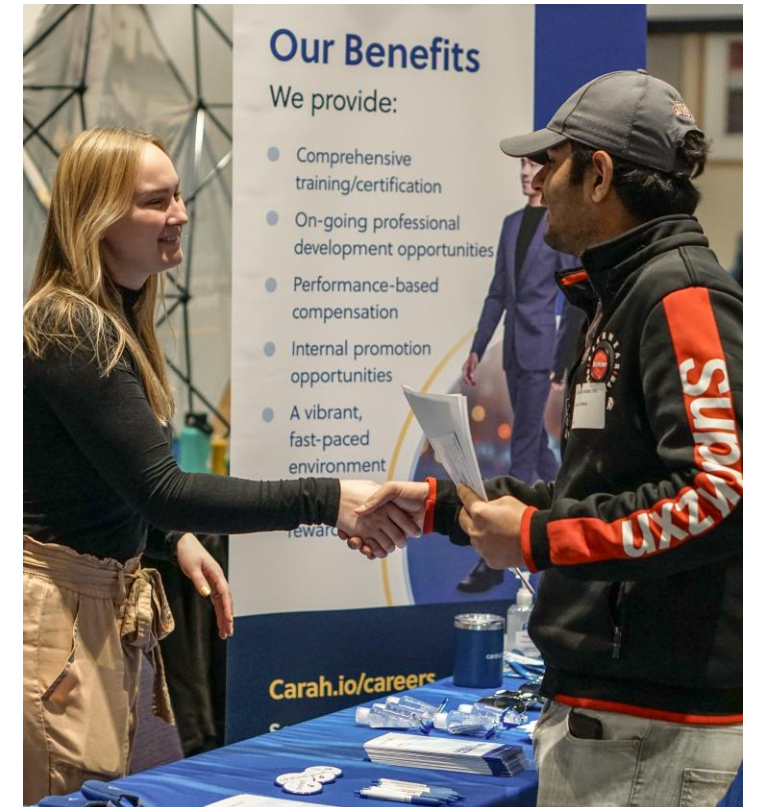




Pursue Work-Based Learning Experiences

Internships

- Provide opportunities to try out career field
- Apply learning from coursework
- Advance career competencies
- Develop a network of career contacts
- Lead to more & better opportunities
- Are often paid
- Can be for academic credit(s)



Bachelor's and Advanced-Degree Recipients

Class of 2023 Career Outcomes Overview

95.4% of Bachelor's and Advanced-Degree Recipients have a Career Outcome

Career Outcome	Bachelor's	Advanced Degree	All Graduates
Working	74.6%	91.6%	76.7%
Continuing Education	20.6%	4.8%	18.7%
Total with a Career Outcome	95.2%	96.4%	95.4%
Still Seeking (employment or education)	4.1%	3.0%	3.9%
Not Seeking (due to life event, travel, etc.)	0.7%	0.6%	0.7%
Total without a Career Outcome	4.8%	3.6%	4.6%

The data reflects knowledge of 3,378 bachelor's-degree recipients and 476 advanced-degree recipients, for a knowledge rate of 74.3%.

Bachelor's-Degree Recipients

Top Employers 2023

1,481 Unique Employers



30+ Hires
Carahsoft Technology Corporation
INOVA
UVA Health

17-29 Hires
Accenture Federal Services
Deloitte
Ernst & Young
Fairfax County Public Schools
James Madison University
KPMG LLP
Sentara
VCU Health System

7-16 Hires	
ADP, Inc.	Huntington Ingalls Industries
ALKU	Insight Global
Bloomberg Industry Group	Leidos
Bon Secours	Lockton Companies
Booz Allen Hamilton	Loudoun County Public Schools
Capital One	MemoryBlue
CGI Federal	Merck & Co., Inc.
Children's Hospital of the King's Daughters	Northrop Grumman
CoStar Group	RSM US LLP
Cvent	Techtronic Industries- TTI
Enterprise Mobility	Thermo Fisher Scientific
Harrisonburg City Public Schools	Walt Disney Company
HCA	

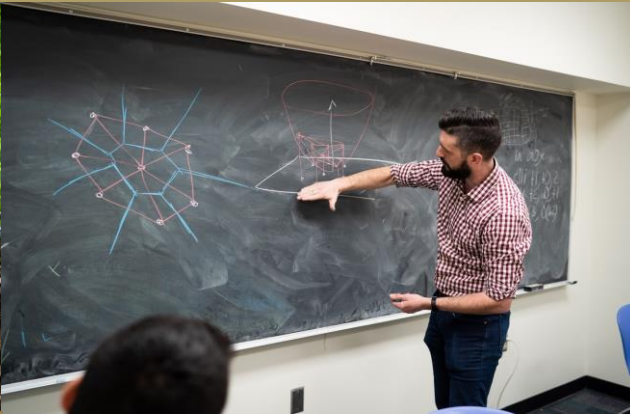


Supporting Your Student

**Students will struggle at some point...and
that's okay!**

How they will cope with that struggle is an indicator
of their success...





The entire JMU community is mobilized to help your student achieve their goals.



Tips for Family Members

Encourage your student to:

- Check JMU email daily
- Reach out to their academic advisor if they need help
- Foster resilience

Ask students how their classes relate to their career ideas

Have students practice their elevator pitch







Start Today!

- Empower your student
- Discuss & ask questions
- Encourage independent interactions with their advisor and the career center
- Support their decisions





**University
Advising**

-  Student Success Center 4500
-  universityadvising@jmu.edu
-  (540) 568-7350
-  jmu.edu/advising
-   [@jmuadvising](https://www.instagram.com/jmuadvising)



**University
Career Center**

-  Student Success Center 3250
-  career@jmu.edu
-  (540) 568-6555
-  jmu.edu/career
-    [@jmucareer](https://www.instagram.com/jmucareer)