

THE ONE BOOK 2025

JMU

**JAMES MADISON
UNIVERSITY.**



**Click
to get
started!**

Congratulations and welcome Dukes!

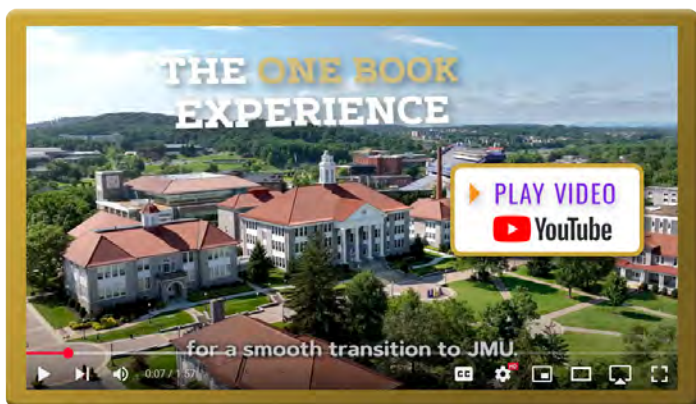
We are honored to welcome you to the James Madison University community! We hope you're excited for all that we have in store for you as the newest member of JMU!

Our goal is to ensure you have the tools to begin your journey at JMU. It all starts with The One Book Experience that will guide you through the next several months. Inside this digital book, you'll find key information to ease your transition to JMU as well as your New Student Checklist that outlines requirements with deadlines.



Let's Get Started!

Activate your eID | After paying your deposit, check your email to activate your eID, set up Okta Verify and create a new password! Access your steps using your JMU eID and password. Your eID is your electronic identification used to access MyMadison, Canvas and other services.



This short video introduces you to The One Book Experience and the various ways you'll find information throughout the following pages.

LEGEND

The following icons appear throughout *The One Book* and serve to provide important step completion dates, help you make a quick jump to page farther back in the book, get more information from a webpage or connect with a department by phone or email.

COMPLETE BY  MAY 20

 WEBSITE: [JMU One Book](#) *Try It: Click Here*

 CALL: [JMU Number](#)

 JUMP TO [Contents](#)

 send an email

NEW STUDENT CHECKLIST	DUE
Read <i>The One Book</i>	May 20
JMU Email Account	May 20
First Year Student Survey	May 20
MyMadison Personal Information	May 20
ALEKS Math Assessment	May 23
Orientation Reservation & Declaring a Major	May 29
Disability Services Application (optional)	May 30
Foreign Language Placement Exam	May 30
First Year Housing Contract	May 31
Prepare for Class Enrollment	June 2
Group Advising	June 6
Madison Money Manager	June 13
Your Enrollment Appointment	June 17
JACard Photo	June 23
Pre-Entry Health Requirements	July 6
Official Transcript	July 10
Pre-Weeks of Welcome Experiences	July 23
Better Conversations Together	Aug. 14
Community Expectations	Aug. 14
It's Complicated	Aug. 14
First Year Assessment Day	Aug. 14
Success Programs	Aug. 14
Weeks of Welcome	Aug. 15

Contents



Click on any content title to jump to that page.



- Steps Checklist2
- JMU Email Account..... 4
- First Year Student Survey..... 4
- MyMadison Personal Information5
- Honor Code5
- ALEKS Math Assessment5
- Orientation Reservation & Declaring a Major6
- Explore Majors.....7
- Disability Services Application.....10
- Foreign Language Placement Exam..... 11
- First Year Housing Contract 12
- Residential Learning Communities14
- Residence Hall Living 15
- Campus Mail 15
- What to Bring.....16
- Dining17
- Prepare for Class Enrollment..... 18
- Group Advising..... 19
- General Education..... 20
- Madison Money Manager (M3) 21
- Financial Aid & Scholarships..... 22
- Your Enrollment Appointment..... 24
- Academic Resources..... 25
- Technology 26
- Textbooks 27
- JACard Photo..... 28
- Know the Student Handbook..... 29

- Pre-Entry Health Requirements..... 30
- Pre-Weeks of Welcome Experiences 31
- Essential Programs..... 32
 - Better Conversations Together..... 32
 - Community Expectations 32
 - It's Complicated 32
 - First Year Assessment Day 32
 - Success Programs..... 32
- The Big Move 33
- Weeks of Welcome 34
- Getting Involved..... 35
- Parking & Transportation 36
- Environmental Sustainability 37
- Mobile Apps 38
- JMU Jargon..... 38
- Campus Directory 39
- Campus Map..... 39
- Academic Calendar 39



Read *The One Book*

The One Book is designed to be your one-stop resource to provide you the necessary information and steps to take to be ready for your first semester at JMU. Each step on your New Student Checklist has additional information provided throughout the book.

COMPLETE BY



JMU Email Account

Log in to your JMU Dukes email account (eID@dukes.jmu.edu) so you can receive important university information. This is JMU's official means of communication with students as outlined in JMU Policy 1209: Electronic Messaging. Make a habit of checking it daily!

COMPLETE BY



First Year Student Survey

COMPLETE BY



The First Year Student Survey asks questions about your high school experiences, personal beliefs and your decision to attend JMU. We compile your responses with the rest of your class to help faculty, staff and administrators best serve you.





MyMadison Personal Information

COMPLETE BY

MAY
20

Now that you have decided to join the JMU community, it is important to keep your information updated in MyMadison.

Emergency Contact Information: The university may need to contact your family in the event of a personal emergency or crisis. Having accurate emergency contact information is essential. Sit down with your family to determine who you should list as your emergency contact(s). Keep your emergency contact information updated in MyMadison.

Emergency Notification: JMU uses a text-based system to inform the campus community in the event of an active shooter or other life-threatening event. You are required to provide your cell number in MyMadison so we can send you emergency notification messages.

Criminal History: JMU is committed to providing a safe living and learning environment for all community members. As a condition of enrollment, all students are required to answer the questions.

Honor Code

Academic integrity is a serious matter at JMU. Suspension or expulsion are possible penalties for violating the Honor Code.

Cheating, copying, plagiarizing, improper citations and buying or using papers written by someone else are a few examples of violations that have the potential to jeopardize your status as a student.

When you take placement exams (ALEKS Math and Foreign Language), you are bound by the JMU Honor Code. We want you to have a successful experience and it is imperative that you are in the right class for that to happen. [Complete the test](#) by Oct. 1.



ALEKS Math Assessment

COMPLETE BY

MAY
23

The ALEKS Math Assessment is a 25-item, open-response, web-based math placement assessment used to assess your current working knowledge of math principles from algebra through precalculus. All first-year students are required to take the assessment. Your score is used to determine the appropriate math course you should take based on your current mastery of math skills and knowledge. Please allow three hours to complete the assessment. Your score will be available in MyMadison within 24 hours of completion. You will need your score for class enrollment. You can take the ALEKS assessment up to three times. In order to retake the assessment, you must wait 48 hours after you have taken the assessment and spend at least three hours in the Preparation and Learning Modules provided in the ALEKS. The highest score of all attempts will be used for enrollment. Visit the [ALEKS Math Assessment FAQs](#) for more information.



Orientation Reservation & Declaring a Major

COMPLETE BY



Get to know
our 2025
Orientation Peer
Advisers!



Orientation is a one-day program where you will learn about academics at JMU, student expectations and campus resources, and engage with your Orientation Peer Adviser and other new students. Summer Orientation is available both on campus and virtually though we recommend attending on campus.

This step must be completed to be able to enroll in fall classes. You will receive an email once the step is submitted fully as well as an event reminder a few days prior to your reserved day. If you cannot attend any dates, please be sure to select Unable to Attend within the reservation.

♦ **On Campus** | 7:45 a.m. - 5 p.m. | Students, Families & Supporters

Dates - June 24, 25, 26, 30, July 1, 2, 7, 8, 9, 14, 15, 16

You will choose an available date based on your availability. Date options are first-come, first-served. We encourage you to complete your steps as soon as possible to have access to your preferred date. Families and supporters will have their own schedule to attend separate sessions about services and resources to best support you. Invite up to two guests to attend and register them in this step. Provide your guest's email address when you register them, so they receive event registration details.

♦ **Virtual: July 17** | 11:30 a.m. - 4:30 p.m. EST | Students only

If you are unable to join us on campus, be sure to select the virtual session on July 17 when making your reservation. You will receive an email to your Dukes account with your personalized link to join live sessions. Make sure your camera, microphone and speakers are in good working order so you are ready to engage with each session.

Accommodations

If you or your guest(s) need accommodations during your Orientation day, please submit your request in the Accommodations section when you complete your reservation. Accommodations may be provided for individuals needing language interpretation (including American Sign Language) and/or assistance for limited mobility, hearing difficulties, and impaired vision. Submit requests for accommodations at least 10 business days before your reserved date. You will receive a confirmation email once it has been received.

Orientation and Transition Fee

All new students are charged \$200, regardless of attendance at Orientation. This fee covers your Orientation day, Weeks of Welcome and other first-year programs. You don't have to pay the Orientation and Transition fee now, but if you have an installment payment plan, make sure your budget includes this fee.



WEBSITE
**Orientation
& Transition**



**Summer Orientation
date options, detailed
Orientation schedules, hotel
accommodations, parking and
additional resources for the
transition.**



Explore Majors

Make a thoughtful decision about your major by determining your interests, values and career aspirations. Pages 8-9 will help you understand which major to declare. You may take lower-level courses in many disciplines, but may need to meet additional requirements before being fully admitted to a major.

All majors fall into one or more of the following categories:

- ♦ Programs open to any students
- ♦ Programs requiring portfolio/audition review
- ♦ Programs with space limitations
- ♦ Programs with content mastery progression standards



WEBSITE: [Learn more about JMU majors](#)



WEBSITE: [Explore career paths for your major](#)

Q: Why do some majors sound the same?

A: Sometimes a major's name doesn't fully describe what you will study. Read the descriptions to learn more about possible careers.



Q: Does the major I declare matter?

A: Yes, your academic advisor is assigned based on the major you declare. It can also affect the courses you take your first semester.



Q: Can I change my major once I've declared it?



A: You can! Return to your *Orientation Reservation & Declaring a Major* step at least two business days before your Orientation date to change it.

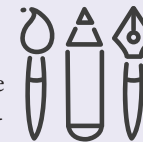
Q: Does it matter when I declare my major?

A: For some majors, it does matter. There are some programs that have declaration deadlines that may impact when you can begin that major. If you are considering a certain major but are not sure, we recommend talking with an [Exploratory advisor](#) and/or emailing firstyearadvising@jmu.edu



Q: What if I am not ready to declare a major?

A: Select Exploratory, and you'll be assigned to an advisor who will guide you through the decision-making process. You have until the start of your third semester to declare. You have the option to take UNST 102, a one-credit course designed to help you intentionally explore majors/minors.



Q: Is there help along the way?

A: Your academic advisor will be a wonderful resource who will introduce you to campus resources, guide you through your class schedule and help you with any academic concerns.



University Advising provides extensive services to help you confirm or choose your major. The University Career Center provides resources and opportunities to help prepare you for your career path.



Majors

College of Arts and Letters

Anthropology
 Communication Studies
 English
 Global Religions and Cultures
 History
 International Affairs
 Justice Studies
 Media Arts and Design
 Modern Foreign Languages
 Philosophy
 Political Science
 Public Administration
 Sociology
 Writing, Rhetoric and Technical Communication

College of Business

Accounting
 Business Management
 Computer Information Systems
 Economics
 Finance
 International Business
 Marketing
 Quantitative Finance

College of Education

Elementary Education
 Inclusive Early Childhood Education
 Middle Grades Education
 Secondary Education
 Special Education

College of Health and Behavioral Studies

Communication Sciences and Disorders
 Dietetics
 Health Sciences
 Health Services Administration
 Kinesiology
 Nursing
 Psychology
 Social Work

College of Integrated Science and Engineering

Computer Science
 Engineering
 Geography
 Information Technology
 Integrated Science and Technology
 Intelligence Analysis

College of Science and Mathematics

Biology
 Biophysical Chemistry
 Biotechnology
 Chemistry
 Earth Science
 Geology
 Mathematics
 Physics
 Statistics

College of Visual and Performing Arts

Architectural Design ¹
 Art ²
 Art History
 Dance ¹
 Graphic Design ¹
 Industrial Design ¹
 Music ¹
 Musical Theatre ¹
 Theatre ¹

Hart School of Hospitality, Sport and Recreation Management

Hospitality Management
 Sport and Recreation Management

University Studies

Exploratory
 Independent Scholars

UNSURE? No Problem!

Exploratory: Not sure what you want to major in at JMU? Simply select “Exploratory” in your *Orientation Reservation & Declaring a Major* step and choose one of the following areas of interest to help guide you along your path to finding a major.

- Arts
- Business
- Education
- Health, Wellness, & Medicine
- Humanities
- Science, Technology, Engineering & Mathematics
- Social Science
- Exploratory



WEBSITE: **Exploratory Advising**

PRE-PROFESSIONAL PROGRAMS

Pre-professional programs consist of courses and experiences designed to prepare you for the required graduate study and/or licensure necessary for a career in your chosen field.

Pre-Athletic Training	Pre-Occupational Therapy	Pre-Physician Assistant
Pre-Dentistry	Pre-Optometry	Pre-Secondary Education
Pre-Law	Pre-Pharmacy	Pre-Theology
Pre-Medicine	Pre-Physical Therapy	Pre-Veterinary Medicine



¹ There are additional requirements when declaring this major.

² You must pass a portfolio review if you are pursuing a B.F.A. in Art. The B.A. or B.S. in Art does not have this requirement.



WEBSITE: **Academics – Undergraduate Majors**

Teacher Licensure

All JMU teacher education programs are designed to meet a vital and nationwide need for trained and committed teachers. Many of JMU's teacher licensure programs can be completed in 4 years through completion of an undergraduate major and some can be completed in 5 years through completion of a combined Bachelors and Master of Arts in Teaching program.

To gain the skills needed for this challenging profession, some programs require additional content, such as a second major or minor.

In the 4-year licensure programs, students will be eligible for their teaching license at the end of their undergraduate career. Students could choose to apply for and participate in a Master of Education program after the completion of the 4-year licensure undergraduate program.

In the 5-year licensure programs, students will be eligible for their teaching license at the end of their graduate career.

See the table to the right to help you determine the major you should select in your *Orientation Reservation and Declaring a Major* step. Keep in mind that admission to a teacher licensure preparation program is not automatic — your academic advisor will provide you more information about admission requirements.



WEBSITE: [Academic Program Details](#)

Graduates who complete any education program at JMU will meet qualifications for initial licensure in the Commonwealth of Virginia.



WEBSITE: [Licensure or Certification Outside Virginia](#)



TEACHER EDUCATION

To pursue a JMU licensure program, follow the table below.

LICENSURE AREA	ONE BOOK MAJOR	ADDITIONAL REQUIREMENTS
Art Education	Art, Design or Art History	
Dance Education	Dance	
English as a Second Language (PreK-12)	Teaching English to Speakers of Other Languages	
Elementary Education (PreK-6)	Elementary Education	
Inclusive Early Childhood Education (PreK-3 and Early Childhood Special Education)	Inclusive Early Childhood Education	
Middle Education (6-8)	Middle Grades Education	Minor in English, Mathematics for Elementary and Middle Grades Teachers, Middle Grades Science or Social Studies
Music Education (PreK-12)	Music	
Physical & Health Education (PreK-12)	Kinesiology	
Secondary Education (6-12)	Secondary Education	Second major in Biology, Chemistry, Earth Science, English, History, Mathematics, Physics or Political Science
1. 4-year with licensure (undergraduate only)		
2. 5-year with licensure (undergraduate + graduate)	Biology, Chemistry, Earth Science, English, History, Mathematics, Physics or Political Science major	In the pre-professional program dropdown, select Pre-Secondary Education as a minor.
Special Education (K-12)	Special Education (concentration in general and adapted)	
Theatre Education (PreK-12)	Theatre	

Disability Services Application

COMPLETE BY



The Office of Disability Services

approves accommodations for disabilities and/or major health impairments that affect your life. If you would like to apply for accommodations at JMU, you will need to complete this step. There are three phases for requesting accommodations at JMU:

1. Complete the Disability Services Application

Review JMU's Disability [Documentation Guidelines](#) to determine what documentation you need to upload to your application. Students can apply for academic accommodations and/or housing accommodations using the Accommodate Portal System.

2. ODS reviews

Disability Services strives to review all new applications with documentation within 15 business days.

3. ODS contacts you

ODS staff will contact you at your JMU email with instructions for your next steps.



Q: What does it mean to have a disability?

A: A disability is a condition that causes significant challenges in a major life activity, like learning, walking, seeing, etc. This includes disabilities such as ADHD, psychological conditions, learning disabilities, chronic illnesses, visual impairments, hearing impairments, orthopedic impairments and many more.

Q: Does a diagnosis of anxiety, depression, autism, diabetes, etc. mean I can get accommodations?

A: Maybe. ODS must go through a process to determine eligibility for accommodations. If you experience challenges due to your disability and you have current documentation, you can request accommodations. ODS will review your request in the context of programs, courses, activities, etc.

Q: What documentation do I need?

A: The documentation you upload with your application should be 1) completed entirely by a qualified clinician, 2) provide current and comprehensive information about how your condition impacts you as an adult and 3) describe the accommodations you need in a college setting.

Q: If I had an IEP or 504 Plan, does it transfer to college?

A: No. There are no IEPs or 504s in college. You will need to submit a Disability Services Application with documentation that meets JMU's Disability Documentation Guidelines.

Q: What accommodations does JMU offer?

A: You can find a list of [our most frequently used programs and accommodations](#) on our website. Each student's needs are unique, so think about what you need and request accommodations accordingly.

Q: What is having accommodations in college like?

A: In college, you will have new responsibilities, like discussing accommodations with your professors, regularly checking your email and learning about campus resources. ODS staff are here to work with students and others in the JMU community. The best skills you can have are knowing yourself and asking for help if you need it!



WEBSITE: [Office of Disability Services](#)

Foreign Language Placement Exam

COMPLETE BY



You may or may not need to take a Foreign Language Placement Exam; it depends on several variables. You will need to take the FLPE if all the following three statements are true:

- ♦ You are pursuing a program of study that leads to a Bachelor of Arts or a Bachelor of Business Administration degree that requires a foreign language (see the list on right); and
- ♦ You have taken two or more years of French, German, Italian, Russian or Spanish in high school; and
- ♦ You have not taken the SAT II in that language.

Still not sure if you need to take the FLPE?
[Take the questionnaire.](#)

You are not allowed to use outside sources (including friends or family) on the exam. You may take the exam only once per language every three semesters. There is not a time limit, so please take your time!



Programs leading to a B.A. Degree

Anthropology *
Art *
Art History
Biology *
Communication Sciences and Disorders *
Communication Studies *
Dance
Earth Science
Economics *
English
Geography *
Global Religions and Cultures
History
Independent Scholars *
International Affairs
Justice Studies *
Mathematics *
Media Arts and Design *
Modern Foreign Languages
Music
Musical Theatre
Philosophy
Physics *
Political Science
Psychology *
Sociology *
Theatre
Writing, Rhetoric and Technical Communication *

Programs leading to a B.B.A. Degree

International Business

* These programs provide the option to pursue either a Bachelor of Arts or a Bachelor of Science degree. B.S. programs do not have foreign language requirements, so you would not have to take the placement exam unless you wanted to continue your language studies at JMU.



WEBSITE: [Learn more about the FLPE](#)



First Year Housing Contract

COMPLETE BY



Signing your Housing Contract is the first part of securing your housing for your first year. When you sign your Housing Contract, you will also select your meal plan and answer some lifestyle questions. The answers to those questions will help you select a roommate, so be sure to answer them honestly.

Residential housing

JMU prides itself on our outstanding residence halls! Each mixed-gender hall has a variety of amenities, including kitchen facilities, study lounges, wireless internet and recreational features. Like many other universities, not all JMU's halls are air-conditioned. Only about half of our halls have this feature. To beat the heat, we encourage you to bring a box fan for your window. Each hall contains at least one air-conditioned space, typically the TV lounge.

Housing accommodations

If you have a disability, please remember to request housing accommodations, if needed. Residence Life does not have access to the information you share with the University Health Center. If you need an accommodation like air-conditioning or a suite-style bathroom, you will need to [request housing accommodations](#). Submit the form by June 13.

Gender-neutral housing

To support all our new Dukes, we encourage you to contact Residence Life about housing assignments based on gender identity. Each request made before July 1 will be addressed with a commitment to providing a housing assignment that best meets the needs of the student.

RESIDENCE HALL AREAS

Bluestone, Hillside, Lake, Skyline, Tree Houses, and Village

Since there are more than 3,000 rooms on campus, it is impossible to provide information about specific rooms. However, you can check out our virtual tours of the room types on campus. There is even a measuring tool provided!



WEBSITE: [Virtual Tours](#)



WEBSITE: [Office of Residence Life](#)

Important Housing Dates

First Year Housing Contract Due	May 31
Residential Learning Community Applications Due	May 31
Housing Accommodation Request Forms Due	June 13
Roommate Selection Deadline	July 1
Gender-Neutral Housing	July 1
Room Assignment Notification	Aug. 1
Move-In Date Selection	Aug. 4-8

RELATED CHOICES:

Meal Plans

When you submit your First Year Housing Contract, it's also the time to select your meal plan. Watch this video to help understand JMU's meal plan options.



JUMP TO [JMU Dining](#)



Roommate selection

Before selecting a roommate, think about what is most important to you when living with someone else. Would it bother you to have a messy roommate? Or would you prefer a roommate who has a similar sleep schedule to you?

You can search for a roommate in the Online Housing System using any of the answers to the lifestyle questions from your Housing Contract. Remember, you aren't looking for a new best friend; you are looking for someone you can live with successfully. Once you think you have found a compatible roommate, one of you will need to form a Roommate Group by creating a group name and password. Share that group name and password with your future roommate so they can request to join the group. The person who created the group will need to approve the request. The maximum number of people in a roommate group is three, designed for triple bedrooms. You are not able to pick your suitemates.



Getting to know your roommate(s)

Start the conversation by sharing why you thought the two of you would be a good roommate match. Were you looking for someone neat and tidy like you are or someone who stays up late like you? After you talk about how you think you will work together well as a roommate pair, you can share what you're worried about and how you can overcome those challenges together.

We also encourage you to plan for your room. Find out who is bringing what or plan to shop together once you are here. You can bring several items to help make your room feel like your home. Most students bring too much with them. Be ready to leave some of the stuff at home.



Room Assignments

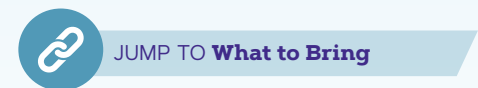
If you decide to change rooms after moving in, you can submit a Room Change Request Form using the Online Housing System beginning Sept. 3. There is a three-week period at the beginning of each semester when room changes are not authorized. This time is designated for all students to check in and for students who decide not to attend to notify the university.



RELATED INFO:

Housing Options

Learn about living on campus at JMU's residential learning communities and what to bring with you.



Residential Learning Communities

One unique housing option is to live in a Residential Learning Community. Living with students who share similar interests will ease your transition to college. RLCs also give you the opportunity to experience closer interactions with devoted faculty members. You and other members of your RLC will be in the same section of one or more classes related to your RLC's academic focus.

Application and selection process

Space is limited in these communities, so you must apply by May 31. Find the application within the *First Year Housing Contract* step. Faculty representing these communities will review your application. Submitting the required application does not guarantee acceptance to this community. Once accepted into an RLC, you will enroll in a specific section of one or more related classes.

The Honors Living and Learning Center

Students admitted to the Honors College are expected, but not required, to live in Shenandoah Hall, which serves as the Honors hall. Live with other Honors students and work with faculty members to explore mutual interests in learning and discovery. Intellectual engagement is the primary programming for the Honors Living and Learning Center.



WEBSITE: [RLCs at JMU](#)

Residential Learning Community	Classes (1 – 3 credits each up to 3 classes)	Academic emphasis	Location (Subject to change)
Arts	Seminar class in fall	Aimed at students in the College of Visual and Performing Arts: live in a building where you can practice, perform and display your art	Wayland Hall
Haynes Scholars (STEM)	Classes in fall and spring	For first-year STEM majors of color who want to take first-year Calculus in cohorts, participate in networking and leadership opportunities, explore creative research projects together and who want to live and learn in a supportive community	Hoffman Hall
MadisonBiz	Classes in fall	Intended to prepare College of Business majors to be engaged and principled business professionals and leaders	Chesapeake Hall
Madison International	Seminar class in fall and spring	Aimed at students interested in other cultures, countries and languages	Paul Jennings Hall
Roop (Teacher Education)	Classes in fall and spring	Designed for students interested in teaching Pre-K through 12th grade; gives the opportunity to take classes together and participate in service projects	Paul Jennings Hall
Sports and Recreation	Classes in fall and spring	Provides Sports and Recreation Management majors with other students and mentors who share interest in exploring recreation and wellness activities	Paul Jennings Hall
Trelawny (Biology and Biotechnology)	Seminar class in fall and spring	Intended to give Biology majors the opportunity to receive mentoring and participate in faculty research projects	Shenandoah Hall

Residence Hall Living

The hall you are assigned will be your home away from home during your first year of college.

What sort of security does JMU have for the residence halls?

All exterior hall doors are locked 24 hours a day, seven days a week. Your JACard is your front door key to your hall. More information on hall safety will be provided on your move-in day.

Do all halls have wireless Internet?

Yes. Wireless service is provided by MyResNet; you can find their [online portal here](#). Residents must create an account and register their devices. [Find more information about how to set up devices here](#).

Where will I do my laundry?

JACard-operated laundry facilities are in each hall. You should bring laundry detergent and a basket or bag. Laundry machines use FLEX or quarters.

Should I bring a rug?

Only Spotswood Hall is carpeted, so if you select Spotswood, you would not need to bring a rug.

Can I have a loft?

Be sure to review Residence Life's [outline of general information on lofts and their use in halls](#). Please bring your own hammer, screwdrivers, an adjustable wrench and any other necessary tools. Storage space for bed parts in halls is not provided. At no time may lofts be stored in campus buildings.



Who is responsible for cleaning my room?

You will need to clean your own room. Vacuum cleaners are available in each hall for students to borrow. Bathrooms that are not accessible to our housekeeping staff must also be cleaned by residents sharing the bathroom. If a community bathroom is accessible from a public hallway, it will be cleaned by our housekeeping staff regularly.

Will I get cable television service in my residence hall room?

Cable television is provided in each room, but you need a TV coaxial cable and a TV that [meets specifications](#). Our halls also have Stream2, allowing the streaming of TV shows, movies and sports from your phone, laptop and other Wi-Fi-connected devices.

I've been assigned to a building that does not have air-conditioning. Can I bring my own air conditioner?

No air conditioners, including personal space coolers, of any kind, are permitted in the halls. If you need air-conditioning because of health needs, you will need to submit a Housing Accommodation Request by June 13.

Did You Know?

RESIDENCE HALL PROGRAMS

Your RA and Hall Director give you opportunities to experience a variety of activities. Hall programs are a great way to get to know people in your hall and make new friends. In recent years, over 45,000 students attended more than 2,000 programs in their halls. This means there is something going on in your hall almost every night!

GETTING YOUR MAIL

You will be assigned a mailbox in the Union Post Office. Access your box number and combination through MyMadison after Aug. 7. Your housing address and mailing address are different. Send personal mail, magazines, packages, etc. to your mailing address. There is no direct mail delivery to the residence halls. The post office in The Union accepts packages on your behalf. An email notice is then sent out to notify you about the delivery. Courier service is available for a fee upon request for packages too large to pick up.

When sending medicine or items needed for guaranteed delivery, please use an overnight carrier and not USPS. Next Day Delivery through carriers such as UPS and FedEx guarantees delivery to our site. USPS Next Day Delivery may be delivered to the local USPS office and need an extra day for us to get it.

With a high volume of packages at the beginning of each semester, please allow extra time for receiving and processing. Consider sending packages a couple of weeks before you arrive to allow for processing.



To avoid mail or package delivery delays, address mail and packages to:

Student Name
800 South Main St.
JMU Box #####
Harrisonburg, VA 22807

What to Bring

We cover all the basics!

All rooms have:

- ◆ 24-hour emergency maintenance services
- ◆ Beds – adjustable
- ◆ Mattresses 36”x80” (twin extra-long)
- ◆ Chest of drawers
- ◆ Closet or wardrobe
- ◆ Desks and chairs
- ◆ Tiled floors. Only Spotswood Hall has carpeted rooms.
- ◆ TV cable hookup – one per room
- ◆ Window blinds or shades

All halls have:

- ◆ Air-conditioned TV lounge
- ◆ Wireless and wired Internet
- ◆ Emergency phones
- ◆ Fluorescent/LED lighting
- ◆ Kitchen
- ◆ Laundry
- ◆ Study lounge(s)
- ◆ Vacuum that can be borrowed by students
- ◆ Vending area



Packing Checklist

This is a non-exhaustive list of items that you are most likely to need at JMU. You may not need all of them, because some will depend on your lifestyle choices (such as whether you have a bicycle or not) and some will depend on which hall you chose (such as whether you need a fan). We encourage you to talk to your roommate(s) about items that you can share.

- Backpack
- Bicycle with a durable lock (there’s a bike rack outside each residence hall)
- Coffeemaker with automatic shut-off
- Desk lamp
- Extra-long twin bed sheets, pillow(s), blanket(s)
- Fan(s)
- First aid kit
- Hair dryer
- Hangers
- Laundry basket and high efficiency detergent
- Personal toiletries
- Posters (Use thumbtacks for drywall or white putty for cinder block. 3M products are only allowed on cinder block.)
- Power strip with circuit protection
- Refrigerator (5 cubic feet or smaller)

What to leave behind

To ensure the safety of all our students, JMU prohibits the use of the following items in residence hall rooms:

- ◆ Air conditioners or personal space coolers
- ◆ Air fryers
- ◆ Appliances without an automatic shut-off
- ◆ Appliances with open heating elements
- ◆ Black lights
- ◆ Candles
- ◆ Curtains and valances that have not been treated and tagged as fire retardant
- ◆ Extension cords, cube/multiplug adapters
- ◆ George Foreman grills
- ◆ Halogen lamps
- ◆ Incense
- ◆ Knives
- ◆ Lamps and bed risers with electrical outlets (lamps with USB outlets are acceptable)
- ◆ Microwaves (Unless rented through [microfridge](#))
- ◆ Pets (fish are the only pets allowed in residence halls)
- ◆ Room heaters
- ◆ Toaster ovens/Toasters
- ◆ Weapons, including replicas and guns (paintball guns or any form of BB gun included)
- ◆ Wireless routers and hubs

Are my personal belongings insured?

The university cannot be held accountable for loss, damage or theft of any student’s personal property. Plan to carry your own insurance coverage. Your family may already provide coverage or you can arrange for personal property insurance through a private agency.

- Reusable water bottle
- School supplies
- Shower caddy
- Shower shoes
- Small trash can
- Television
- Towels and washcloth
- Umbrella

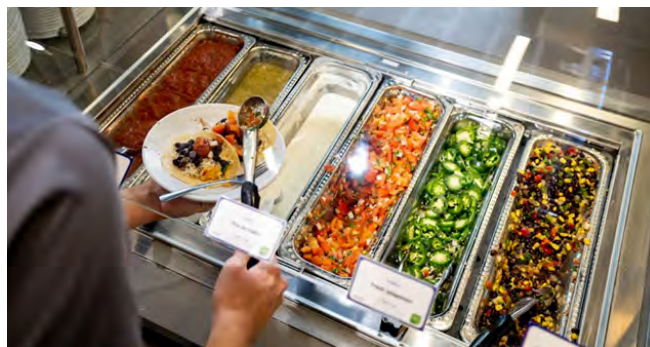


Dining

JMU Dining boasts an award-winning culinary program landing at the top of *Princeton Review's* list for more than 20 years running. Dining is an integral part of campus life, and we look forward to providing a memorable experience. With more than 30 restaurants to choose from, JMU Dining has something for everyone, offering convenience, flexibility, quality, value and healthy options with you in mind. Dining on campus provides the social experience essential to campus life, whether gathering with friends, taking study breaks or to relax and unwind.

Meal Plan Basics

A meal plan unlocks delicious meals, snacks, beverages and more. [Explore our meal plan options](#), available to residents and commuters. Each plan offers Meal Punches and Dining Dollars. Both are conveniently loaded onto your JACard so there's no need to carry additional cards or cash.



If you have questions . . .



WEBSITE: [JMU Dining](#)



CALL: 540-568-6751



dining@jmu.edu



Dining at a Glance

MEAL PUNCHES are included with a meal plan, with a designated amount available depending upon your plan. They reload daily or weekly and can be used in three different ways. Meal Punches give you all-you-care-to-eat access at our resident dining halls, E-Hall and D-Hall. They can also be used for a meal equivalency or 'Duke Deal', only available at select retail locations.

DINING DOLLARS can be used at any JMU Dining location as a declining dollar balance loaded for the semester. Enjoy the convenience of using them at dining halls, retail locations, convenience stores, concessions and on-campus vending machines. Unused Dining Dollars at the end of the fall semester roll over to the spring. However, any remaining funds at the end of the spring semester are non-refundable and cannot be transferred to the next term.

ALLERGIES OR SPECIAL DIETARY NEEDS?

At JMU Dining we recognize and accommodate food allergies, preferences, and special dietary needs in a way that's personalized, sensitive, and supportive. In fact, our employees undergo certified allergy training, and we pride ourselves on working with you to make sure you can make informed food choices. Visit our [website](#) for a detailed guide to navigating food allergies and special dietary restrictions.

SUSTAINABLE DINING We consistently strive to become more sustainable by embedding [environmental stewardship](#) in our everyday operations. Our programs and policies include the increase of sustainable food purchasing, educating and empower students to lead a sustainable lifestyle, prioritize circularity and reduce food waste. Together we can make a positive impact on both people and the planet.

Prepare for Class Enrollment

COMPLETE BY



Begin by working through the *Prepare for Class Enrollment* Canvas course to get ready to enroll in classes in June. The course is organized in modules with important class enrollment information by major, a general education overview, and transfer credit information, so we recommend reviewing the modules multiple times.

Located inside the modules, your *1st Semester Enrollment Worksheet* identifies classes you need to enroll in for your first semester. The information is major-based. You will declare only one major and enroll in those major-specific classes.

Additional majors and/or minors can be added after fall classes begin.

Important Enrollment Dates

First Year Advisors Reach Out	June 6
1st Semester Enrollment Webinar	June 16, 7 p.m.
First Year Enrollment Begins	June 17
Enrollment Closes	July 17, 11:59 p.m.
Open Enrollment Begins (all students)	Aug. 1, 8 a.m.

Add these dates to your calendar!

Your academic advisor

One of your most important relationships at JMU will be with your academic advisor. Your academic advisor will assist you through your transition to JMU, help you understand your curriculum and connect you to resources that will help you be successful. Developing a good relationship with your advisor is a great way to stay well-informed and to start off your time at JMU strong. Incoming students are assigned a first year academic advisor who is specifically trained to support you through your first year. In February, you will transition to a major specific advisor.

What you do:

- ◆ Know who your academic advisor is and how to reach out for assistance.
- ◆ Ask your advisor questions about things you don't know.
- ◆ Know how to fulfill degree, major and general education requirements.

What academic advisors do:

- ◆ Discuss academic choices with regards to long-term academic and career goals.
- ◆ Address questions and concerns regarding General Education, major and degree requirements.
- ◆ Help with academic planning, decision-making and with identification of other campus resources.



Learn more about what it means to have an academic advisor at JMU!

Group Advising

COMPLETE BY



Group Advising is the beginning of your advising journey at JMU. You are required to meet virtually in mid-June with your first year advisor in a small group with other students within your major. These meetings are for students only and will help you learn critical components of the JMU curriculum, discuss strategies for success during the upcoming fall class enrollment period and further expand on content found in your *Prepare for Class Enrollment* step. Your academic advisor will also share major specific class recommendations to further prepare you for enrollment. We suggest that all students review content covered in these modules prior to their group advising session.

What will you need?

- ◆ A computer and Internet access to join the virtual Zoom meeting
- ◆ A quiet place where you can concentrate
- ◆ To be prepared to participate in small group discussions
- ◆ Something to take notes about important enrollment tips, tricks and best practices
- ◆ To be available for the full 75 minutes

How will my advisor contact me?

Your academic advisor will contact you via your JMU email with information about how to schedule. This email will also include information about the times that they will be available. Advisor outreach will begin on June 6.



General Education: The Human Community

General Education: The Human Community is the core curriculum that all Dukes complete. The program requirements assist you in developing skills, knowledge and mindset to succeed in all spheres of life — career, family, community and polity. Program requirements add up to 41 credits — one-third of your 120 total credits needed to complete your degree!

There are many pathways into and through The Human Community. Many students bring college-level credits with them from dual enrollment or test credits. Besides meeting the program's own requirements, GenEd courses can also serve as pre-requisites for majors or minors, as electives or as degree requirements. Exploratory students will find them to be a useful way to find an academic home. Details relevant to your particular journey can be found in the *Prepare for Enrollment* step and modules.

MADISON FOUNDATIONS | 9 credits

These three Foundations courses emphasize communication and critical inquiry, including information literacy. Prioritize them in your fall enrollment, before choosing other General Education classes and aim to complete them during your first two semesters or the summer following.

ARTS & HUMANITIES | 9 credits

These three courses deepen appreciation of the human condition and expression. Arts and Humanities assist in exploring our purpose, making sense of our experiences and understanding people from different eras, places and cultures.

THE NATURAL WORLD | 10 credits

Natural World courses deepen your understanding of scientific and mathematical facts, concepts and models, expanding your application of analytical methods to check evidence and develop and test theories. These include a college-level math course, science courses from two different areas and a one-credit laboratory. Complete your Natural World classes by the end of your sophomore year, as they build upon former course work and experiences.

AMERICAN & GLOBAL PERSPECTIVES | 7 credits

These courses explore the key social and cultural processes that structure and shape the human experience. In today's world, you must think about the scholarly perspectives and methodologies that guide analysis and inform public policy in our own society and in the global community. The three American Experience courses—HIST 225, JUST 225 and POSC 225—reflect JMU's commitment to citizenship.

SOCIOCULTURAL & WELLNESS | 6 credits

By studying the variables that influence human behavior in society, you gain an understanding of the relationship between the individual and a diverse community and develop a sense of responsibility for self and others. You will explore how individuals develop and function in the social, intellectual, emotional, physical and spiritual dimensions. The Wellness requirement signals that we care about your overall well-being, especially as you transition to college. Several of the Sociocultural & Wellness courses are requirements for majors or pre-professional programs.

General Education Options Abroad

Global awareness and cross-cultural competency are intentionally distributed across The Human Community's learning outcomes, but you can also meet program goals by completing General Education requirements abroad. [Explore the 20+ faculty-led programs](#) that offer General Education coursework. The all-GenEd Summer [Semester in Scotland](#) and the Spring [Semester in Spain](#) programs enable students to complete up to five program requirements in one location!



For more information and a complete listing of courses and requirements:



WEBSITE: [General Education Program](#)



CALL: 540-568-2852



gened@jmu.edu

Madison Money Manager (M3)

COMPLETE BY



The **University Business Office** is where you'll find everything you need to know about tuition and fees, payment options, due dates, etc. If you have questions, view our "[Start-Here](#)" page for additional information.

Statement and payment information

Madison Money Manager gives you, and anyone you choose, access to your student financial account. Access M3 through MyMadison and set up authorized users so they can view your statements and account activity, as well as talk to UBO about your student account—only authorized users are allowed to discuss your financial account with UBO. You, and all your authorized users, will receive an email when a statement is available. Set up your authorized users in M3 before the step deadline to ensure notification of the semester statement.

Payment options

Charges not covered by financial aid or the installment payment plan are due in full by the semester due date. Pay your charges through M3, by mail or in person at the cashier counter. Send outside scholarship information to UBO for processing. Include your full name and student ID number for proper identification.

Installment payment plan

To pay your education expenses monthly, use the payment plan offered through Flywire. The payment plan is available for a small enrollment fee. Enrollment for the upcoming year begins on June 1 and ends on the semester due date. Contact UBO or visit our [website](#) for help determining a budget.

Refunds

Grants, loans and scholarships are credited to your account in the order that JMU receives them. Refunds are generated automatically for financial aid overpayments and upon request for personal overpayments. Set up direct deposit immediately following Orientation to ensure you get your refunds as quickly as possible. Watch for an email from BankMobile Disbursements that has instructions about setting up a refund preference once your account has been activated. Even if you don't think a refund will occur, go ahead and set up a preference in case you receive a reimbursement of any sort in the future. Parent PLUS loan refunds are mailed to the parent unless otherwise noted on the loan application.



WEBSITE: [University Business Office](#)

Financial Aid & Scholarships

Complete and submit the Free Application for Federal Student Aid to the federal processing center via studentaid.gov to be considered for financial aid. To receive priority financial aid consideration the FAFSA must be received at the federal processor by March 1 before the academic year you will be attending.

Preliminary Aid Offer Notices

Preliminary financial aid offers are sent by email to qualified students before May 1. The email used for this notice is the same one used by Admissions to communicate the student's acceptance. Estimated financial aid packages are developed based on the FAFSA without verification. After May 1, all preliminary financial aid offers are canceled and FAFSAs verified.

Official Aid Offer Notices

If a student's FAFSA passes the verification process, an official financial aid offer notice is sent to the student's JMU email near the end of June. This notice directs students to MyMadison to accept or decline awards. If you need to provide more information to complete the FAFSA review, you'll receive an email requesting the necessary verification materials. An official financial aid offer cannot be generated until the review is complete. Reply to these requests for information quickly to maximize your financial aid package.



Looking
for a job?



WEBSITE: [Student Employment Opportunities](http://StudentEmploymentOpportunities)

Federal Direct Loans

If you are accepting a Federal Direct Loan at JMU for the first time, you must complete Entrance Loan Counseling and a Master Loan Promissory Note. Instructions will be available on MyMadison after accepting the loan.

All parents accepting a Federal Parent PLUS Direct Loan must complete the PLUS Direct Loan Application each year, as well as a Master Loan Promissory Note the first time they accept a Federal Parent PLUS Direct Loan at JMU (for a particular student).

We encourage you to review [JMU Terms and Conditions of Financial Aid Consumer Information](#) for more information about financial aid and required disclosures.





Scholarships

Scholarships are generally separated into two areas: need-based or merit-based.

To determine your eligibility for need-based scholarships, you must file a FAFSA. After filing your FAFSA, you can contact your major's department to ask about available need-based scholarships.

The major criterion for merit-based scholarships is exceptional academic performance. Other common criteria include leadership, co-curricular involvement, geographical background, major and career goals. Various departments award a limited number of merit-based scholarships for incoming first-year students.

A large percentage of private scholarships received at JMU come from churches, high schools and community service organizations such as the Elks and Moose lodges. Look in your local community for scholarship opportunities.

If you receive an outside scholarship, notify Financial Aid so that we calculate it in your award package. If JMU has met 100 percent of your demonstrated need and you receive an outside scholarship, your financial aid sources may be reduced.

If you receive a scholarship that is not listed on your Financial Aid Award Notice, please submit the [Supplemental Information Form](#) located in the Scholarship section of our website. Regulations require us to consider this when determining your eligibility. Scholarship checks received with no instructions about which term they should be applied will be applied to the term when received.

Send outside scholarship checks to the University Business Office. To ensure proper credit, ask the donor to include your name, your Social Security Number or student ID number on the scholarship check.

Deadlines!

Scholarship deadlines can vary. The best place to view the different deadlines is on [our Scholarships webpage](#). Private scholarship deadlines are usually in the spring semester for the next year with decisions made toward the end of the spring semester.



WEBSITE: [Financial Aid](#)



WEBSITE: [Scholarships](#)



Your Enrollment Appointment

AVAILABLE ON



Your class enrollment will start on June 17.

Review the modules in the *Prepare for Class Enrollment* step to ensure you are ready to enroll. If you have questions about enrollment, we encourage you to reach out to your academic advisor and/or attend our 1st Semester Enrollment Webinar at 7 p.m. on June 16.

Don't have an Enrollment Appointment? The *Orientation Reservation and Declaring a Major* step must be completed to receive an enrollment appointment and gain access to enroll in classes.

Enrolling in classes

When it is time to enroll, you need your enrollment worksheet, your test credit and any dual enrollment information. If you have not yet sent in any earned credits from courses taken elsewhere, we encourage you to submit this as soon as possible once you have earned a final grade and/or a score for any test credits. Refer to these helpful resources for [dual enrollment credit](#) and [test credit](#). Email your advisor with any questions.

Once your enrollment appointment begins, log in to MyMadison and navigate to your Student Center to begin registering for classes. We recommend you enroll as soon as possible as seats fill fast. Not all majors require a math class your first semester. Keep in mind that once the system opens for enrollment you will be able to access it through July 17 at 11:59 p.m. A few weeks after enrollment opens, your advisor will review your schedule to ensure you have completed enrollment for the fall semester and suggest any necessary changes.

Follow the enrollment worksheet for your major to create a schedule of 14-17 hours prior to your reserved Orientation date.



Need help? Refer to the *Prepare for Class Enrollment* step. If a required class is closed, you may place yourself on waitlists, if available. Students move from the waitlist to a class as seats become available. If all sections are closed and waitlists are not available, continue to create your schedule with other classes and check back at a later date for open seats.

Shopping cart caution!

Putting preferred classes in your shopping cart early does not reserve you a seat. Course availability varies during your enrollment window.



Support for Your Transition

JMU wants you to succeed academically and has the resources to help you!

Excelling in Classes

- ◆ Visit your classrooms before classes begin.
- ◆ Get organized! Get a calendar or planner and write down all exam dates, due dates for papers, class meetings and study sessions.
- ◆ Get to know your professors by visiting them during office hours or talk to them after class.
- ◆ Communicate with your academic advisor. After the semester starts, students should schedule an appointment with their academic advisor through MyMadison Connect.

Free tutoring

The [Learning Centers](#) offer online and in-person learning assistance through the following programs:

- ◆ **Academic Coaching** helps students develop skills and strategies that support academic success.
- ◆ **The Communication Center** assists with speech preparation and practice.
- ◆ **Peer Assisted Study Sessions** offer review sessions twice a week for specific supported courses.
- ◆ **The Science and Math Learning Center** provides tutoring for introductory science and math classes.
- ◆ **The University Writing Center** offers writing consultations for all majors for writing tasks.



Learning Success Strategies

[LSS](#) enhances educational outcomes for all students through training in various learning strategies. Based on strengths, weaknesses and specific class demands, these strategies are modified according to academic progress or changing needs.

Libraries

At JMU, the [Libraries](#) support your academic and creative success. Multiple library locations offer comfortable and safe places to learn, explore and collaborate. In our makerspace, you can craft and invent with technologies including 3D printers, virtual reality, sewing machines and more.

The Libraries' knowledgeable staff and faculty are eager to help you find the tools and resources you need, whether at a service desk, via online chat, in a workshop or by appointment. As you progress in your studies, you will meet your librarian – there is one for each major! An expert in research resources, your librarian can provide you with personalized support in finding, evaluating and using information for assignments, research projects and more.

Residence Life academic support

The Residence Life Resource Center located in A-section of Huffman Hall provides services and programs for you. If you are concerned about any of the following, the Resource Center is the place for you!

- ◆ Developing effective study skills
- ◆ Time management
- ◆ Stress and balancing new responsibilities
- ◆ Homesickness
- ◆ Interacting with your professors

Counseling Connections

[Counseling Connections](#) is a program to assist incoming students with previous or existing mental health concerns in connecting with appropriate mental health resources. Students who are currently connected with a provider are strongly recommended to maintain care with those providers. If unable to do so, e.g. limitations of licensure coverage, contact the Counseling Center to schedule Counseling Connections phone call.

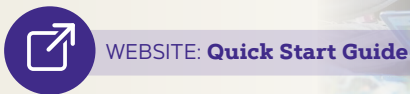


Technology

Use the **Quick Start Guide** for information on:

- ♦ Installing Microsoft Office & other software
- ♦ How to access the Internet on campus
- ♦ Computer recommendations
- ♦ MyMadison
- ♦ Setting up your TV on campus

For additional support, contact the IT Help Desk:



Computer Security

Computer crime is much more common and easier to perform than people realize. Keep your computer running well by using tips and security information from the Quick Start Guide.

Should I bring my own computer/printer?

Yes, you should bring a computer from home, as long as it meets minimum specifications and is set up securely. There are also more than 500 computers in labs available to all students, including two 24/7 labs and three assistive technology labs. The labs offer printing, as well as free access to a wide variety of software to complete class assignments or conduct research.

Windows or Mac?

Visit JMU's [Computer Recommendations for Incoming Students](#) to see which operating system and computer configuration is best for your major. Information Technology strongly discourages the use of Chromebooks.



Tech needs?

The Madison CyberZone, within the Bookstore, offers computer systems, software and peripherals at special academic pricing. The CyberZone also provides computer hardware and software recommendations by major. The CyberZone partners with JMU Information Technology and academic departments to make sure all of its computers meet class requirements. CyberZone systems meet or exceed recommended specifications and receive on-campus warranty service.

Madison CyberZone is an Apple Authorized Service Provider and Dell computer warranty repair center, providing both in and out of warranty repair. These services include:

- ♦ Testing, diagnosis and replacement/repair of Apple and Dell systems
- ♦ Accidental Damage repair under AppleCare+ for Mac
- ♦ Accidental Damage repair under Dell's CompleteCare
- ♦ Facilitating shipping for Dell's Mail-in warranties
- ♦ Limited out-of-warranty support for other brands of computers



For hardware warranty repair information, call the Madison CyberZone at 540-568-3989 or visit the Quick Start website.

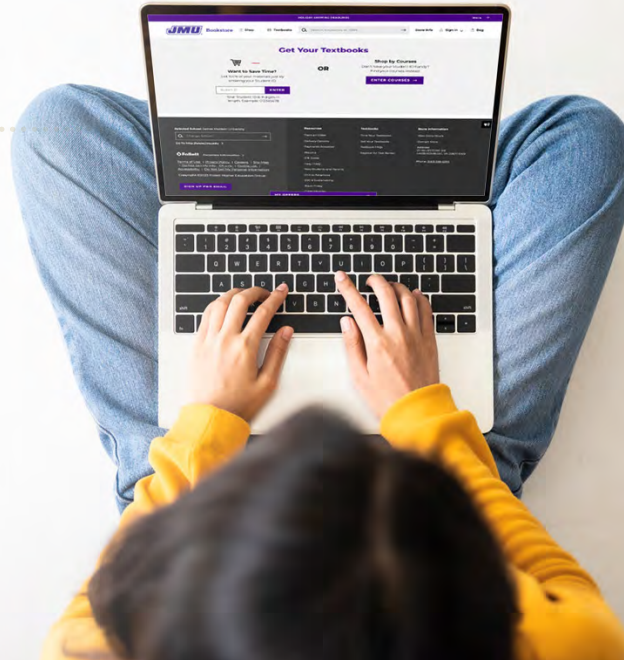
JMU Bookstore computers include	Apple	Dell
At least 3-year on-campus hardware warranty support (Laptop batteries are considered consumable and are typically covered for only one year. See more information here.)	✓	✓
On-Campus Accidental Damage Repair (AppleCare+ for Mac) (Dell CompleteCare)	✓	✓
Loaner Program (The CyberZone has a limited number of loaner laptops available while your computer is being serviced)	✓	✓

Textbooks

Once enrolled in your classes, you'll be able to pre-order your textbooks. At JMU's bkstr.com page, click Textbooks and enter your JMU ID number. Once there, you will see all the books you need for your classes through the bookstore.



WEBSITE: JMU Bookstore



Textbook Type	Traditional	Rental (select titles only)	Digital Textbooks (select titles only)
Media Format	Hardcopy	Hardcopy	Digital
Usage Period	You own it	1 Semester	Varies by publisher
Re-sellable	Depends on demand and condition of book	No	No
Price	New: Standard Used: Save 25%	Save 40-80%	Save up to 60%
Take Notes and Highlight	Yes	Yes	Yes
Requires computer	No	No	Yes (or tablet)
Requires Internet Access	No	No	Yes



JACard Photo

COMPLETE BY



Your **JACard** is your official JMU identification card for most on-campus services. Your card is active one week before classes start. Your ID number, a nine-digit number on the front of your JACard, will serve as your primary identifier for services on campus.

Follow the guidelines to submit an acceptable photo for your JACard. Within 72 hours of submitting, you will receive an approval or rejection email from Card Services.



CBORD MobileID is the Android- and Apple-compatible app version of your JACard. Using this app serves as a supplement to your JACard on campus.



Lost or stolen cards

Report loss or theft of your JACard [online](#) or call Card Services at 540-568-6446 during normal business hours. After 5 p.m. contact Campus Police at 540-568-6912.

FLEX it!

Your FLEX account is a pre-paid debit account. It works like a checking account without having to write checks, pay a service fee or balance your account. There are no annual fees. Your account opens when you enroll.

You can add money to your account by phone, mail, in person or online. You can also add FLEX via a credit card (MasterCard, VISA, Discover and American Express). You can also use the cash-to-FLEX stations around campus to add cash to your account at any time.



WEBSITE: [Card Services](#)



CALL: [540-568-6446](tel:540-568-6446)



Commuter Students can purchase a meal plan to fit your lifestyle!

Know the Student Handbook

Office of Student Accountability and Restorative Practices (OSARP) supports the JMU mission by facilitating student development and restoration through a fair process that holds students accountable to community and university standards to support student and community success. OSARP **CARES** about student, organizational and community success through the following values: Collaboration, Accountability, Restoration, Education and Support.

Who is considered a student by OSARP?

The term “student” includes all persons who enroll or take courses at JMU. Generally, “student status” begins at the payment or waiver of the deposit for admission and will continue through the verification of the completion of all academic requirements for a declared degree program(s). Refer to the [Student Handbook](#) for the full definition and additional details.

Standards of conduct, policies, and accountability procedures

It is your responsibility to know and follow federal, state and local laws as well as JMU policies. The Student Handbook contains all standards of conduct and policies and full definitions for students, recognized student organizations and student groups, explains OSARP’s accountability processes and outlines the processes to address allegations of hazing, sexual misconduct and Title IX sexual harassment. It is important to know that processes and policies can change; the online Student Handbook is the current version used by OSARP. When changes are made, OSARP notifies the university community via your JMU email.

Using your voice on campus

An engaged university is one where its members use their voices. As a citizen and a member of our commu-

nity, the right to use your voice is protected by the First Amendment and the university has processes to address First Amendment violations. [JMU Policy 1121](#) outlines both protected speech and restrictions that can be placed on speech due to time, place and manner. There is also information about freedom of association under the First Amendment and directions to the grievance procedures if you feel your First Amendment rights are violated.

How will a student, recognized student organization, or student group be notified of an alleged policy violation(s)?

OSARP will send notification of an alleged policy violation(s) to a student’s JMU email. For a recognized student organization or student group, the student who receives notification of an alleged policy violation(s) is typically the President or Team Captain, who responds on behalf of the organization or group. The notification of an alleged policy violation(s) contains important information about the case, including the date, time and location of a meeting to discuss the case or to review the accountability process that will occur.

Strategies for alcohol and drug violations

OSARP uses four strategies for Alcohol and Drug violations for individual students: Three Strikes, Parent/Guardian Notification, Off-Campus Response and the Enlightened Citizen Amnesty Process (ECAP). For more information on these strategies, please refer to the [Alcohol/Drug Information](#) section of the Student Handbook.

Reporting alleged misconduct to OSARP

Any JMU student, faculty or staff member wanting to report or explore their [reporting options for alleged misconduct](#) involving an individual student, recognized

student organization or student group should contact OSARP. Reports submitted by non-JMU individuals will be evaluated based on the jurisdiction criteria in the Student Handbook.

Think before you post!

Online communities provide great forums to stay in touch with friends, meet new people, share pictures and express yourself. Know that items on social media can be evidence in the criminal/civil court process and campus accountability processes. Social media often display viral trends that some students may find funny. However, these trends may be considered a violation of university policy. As such, OSARP may review cases for students participating in viral social media trends if the behavior might violate university policy, as outlined in the Student Handbook.

Restorative Practices

OSARP uses [restorative practices](#) to address conflict and harm as well as build community. We work with those impacted by harm or involved in a conflict to explore ways to repair the harm or address the conflict. This approach allows individual growth, promotes accountability and empowers participants to develop solutions.

If you have questions . . .



WEBSITE: [OSARP](#)



CALL: [540-568-6218](#)



osarp@jmu.edu

Pre-Entry Health Requirements

COMPLETE BY



State law requires students to submit specific information about immunizations and complete a TB assessment form (six questions). Immunizations must be up to date. Any official immunization record will be accepted. JMU does not require a physical exam, but you must complete the following:

1. Log onto [MyJMUCHart Patient Portal](#) to check the status of your immunizations, complete the TB Assessment and upload your insurance information.
2. Continue checking your JMU email and secure messages on MyJMUCHart Patient Portal for confirmation that your record has been verified and is complete. Your pre-entry health requirements are not complete until you receive that confirmation. An enrollment hold and fine will be placed on your account if your immunizations and TB Assessment are not deemed complete by the Health Center staff.



Having trouble accessing MyJMUCHart Patient Portal?

Please follow these tips:

- ◆ Google Chrome is the preferred web browser.
- ◆ Clear your browser history or cache before starting.
- ◆ Avoid Apple devices to access MyJMUCHart Patient Portal.
- ◆ Contact the Health Center at 540-568-6178, option 2, during business hours if issues continue.

Tips for transiting to self-managed health care

- ◆ UHC is a confidential resource.
- ◆ Students can select whether to share information from each visit and with who.
- ◆ A Medical Power of Attorney is not needed for UHC
- ◆ Students are responsible for managing their oral medications.
- ◆ Confirm that current insurance will cover you while at JMU for specialists or emergency care.
- ◆ Check out the on-campus pharmacy or locate the closest local pharmacy.
- ◆ Consider getting a 90-day supply of any oral medications or using a mail order option.



Official Transcripts

COMPLETE BY



Be sure to send your final high school transcript with final grades and graduation date to JMU Admissions as soon as possible. If you have dual enrollment, AP/IB test scores or any other courses you hope to receive credit for, you should submit an official college transcript and/or test scores to JMU Admissions for credit evaluation. Refer to these helpful resources for [dual enrollment credit](#) and [test credit](#).



WEBSITE: [University Health Center](#)

Pre-Weeks of Welcome Experiences

COMPLETE BY



Prior to the official start of the fall semester, students have the opportunity to engage in a Pre-Weeks of Welcome experience. These experiences are a great way to ease into the JMU community, start making connections with other new students in small groups and offer early on-campus move-in, all before Weeks of Welcome officially begins. We encourage you to explore more about each experience and prepare to immerse yourself in an unforgettable experience. Registration will open on May 1 and additional cost may be required.

Madison Orientation Adventure Trip

MOAT, hosted by UREC, is a three-night, four-day adventure program designed for new students. Students will meet up with student trip leaders to tent camp, rock climb, hike and canoe in the Shenandoah Valley. No experience is necessary! There are also multiple MOAT trips across the summer.



PRE - WEEKS OF WELCOME

Mosaic Connections

MC, hosted by the Center for Multicultural Student Services, is designed to empower, support and inspire student success by fostering a strong sense of belonging and personal growth. Through meaningful connections, access to campus and community resources and opportunities for holistic development, students will build supportive networks, develop skills for academic and personal success and explore the value of shared spaces in a welcoming JMU environment.



WEBSITE: [Pre-Weeks of Welcome](#)

Dukes Making a Difference

DMAD will allow you to connect with other service-minded students while volunteering with local non-profits. Learn about Harrisonburg's most pressing social issues. No experience necessary; come ready to learn and serve together!



New Dukes Abroad

Join other new dukes in July by applying to study abroad in Germany or Guatemala. Not only will you travel and build relationships with other new students, but you'll earn three-credits before officially starting at JMU in the fall.



Apply by
April 17!

Essential Programs

COMPLETE ALL FIVE BY



Better Conversations Together

Talking constructively across differences is one of the key 21st century skills you will need to succeed. The program provides an engaging and multifaceted opportunity for you to build dialogue skills early in your college career.

You will begin by completing two online lessons in Perspectives, focusing on how we think and process information, as well as how your moral foundations shape how you talk and listen to others' views. During the fall semester, you will participate in a small group, peer-facilitated deliberation to practice talking across divides to find common ground on a difficult, wicked issue. You will receive a certificate of completion at the end of the program.



Community Expectations

At JMU, we are deeply committed to the health, welfare and success of our students. We have strategically implemented research-based prevention programs necessary for you to make healthy choices. We require all incoming students to complete these online programs.

It's Complicated

How can you go on to make good decisions in college and beyond? JMU's ethical reasoning program offers a simple but powerful strategy to help you make better, more ethical decisions in everyday life.

The Ethical Reasoning in Action strategy involves asking Eight Key Questions to approach decisions with curiosity and consideration for others. Asking the 8KQ helps us move from reacting to responding, which improves the way we engage with the complex situations we face in our personal, professional and civic lives.

Ethical reasoning, like writing or verbal communication, is a skill developed with practice. Begin by completing the It's Complicated Canvas course. You will learn about the 8KQ and how others use the strategy, discover your ethical reasoning preferences and encounter a challenging dilemma.



First Year Assessment Day

You will receive instructions on how to access the assessments via your JMU email on Aug. 4. Finish all assessments by Aug. 14 to avoid an enrollment hold. JMU uses the data you provide to inform program improvements and your performance will not impact your university record, grades or placement into programs or courses.

Success Programs

JMU provides many resources to support your success as you start your college career. The Incoming Student Skills & Attitudes Questionnaire (ISSAQ) provides you, your advisor and JMU an important snapshot of your strengths and opportunities for growth. New Dukes 101 is a one-credit student success seminar designed for incoming students to prepare for success at JMU. Other success initiatives include student success coaching, early student success system and more!

Weeks of Welcome Starts With The Big Move!

We are excited for you to join us on campus. Once you move in to your residence hall, you will:

- ◆ Meet your First year Orientation Guide (FROG) and Resident Adviser.
- ◆ Attend and actively participate in mandatory programs.
- ◆ Meet with your academic advisor to prepare for the start of classes.
- ◆ Engage with your peers to start making connections.
- ◆ Explore opportunities to get involved.

After move-in, students are expected to be on campus and participate in Weeks of Welcome starting the evening of their move-in day.



Moving day helpful tips

- ◆ Move-in dates for most first-year students will be Friday, Aug. 15 and Saturday, Aug. 16.
- ◆ Use the driving directions provided.
- ◆ Have your ID ready to get your keys at your assigned hall.
- ◆ Bring just the essentials including seasonal items only needed for the current season when moving in.
- ◆ Bring a dolly, handcart or wagon from home as availability of carts varies per building.
- ◆ Label all your belongings with your name, hall and room number.
- ◆ Plan ahead by shipping trunks and large boxes with your name, residence hall and room number and your campus mailbox number to campus:

University Services Building - Warehouse
181 Patterson Street
James Madison University
MSC 7007
Harrisonburg, VA 22807

Pick up your packages on your move-in day at the Warehouse in the University Services Building, Room 110. Please call the Warehouse Manager at 540-568-6450 with any questions.



We discourage bringing trailer attachments or rental moving trucks to campus, as our ability to accommodate parking is extremely limited.

International students

The Center for Global Engagement's International Student and Scholar Services team is looking forward to meeting you in person during Weeks of Welcome! International students have unique needs and the ISSS team offers several sessions and assistance specifically designed to address your questions and concerns. For more information visit [the International Student Scholar Services \(ISSS\) website](#).



Weeks of Welcome

COMPLETE BY



Weeks of Welcome is designed to introduce you to the Madison culture and help you ease into your first semester. You will participate in a variety of educational and social programs to familiarize yourself with JMU's academic expectations and campus resources, reconnect with your OPA and meet other JMU students. Weeks of Welcome starts the evening you move-in and runs through mid-September.

When will I meet my FROG group?

On the night you move in, you will meet with your FROG group, which will be made up of students who live in your residence hall, or one nearby. First-year commuter students will check-in and be introduced to their FROG group on Saturday, Aug. 16.

JMU BeInvolved

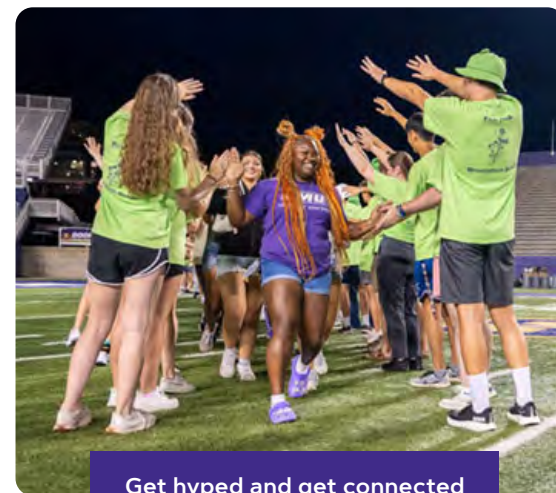
Visit JMU's official campus engagement platform, BeInvolved by visiting the website or downloading the app. You can explore over 400 student organizations. We want students to have safe and healthy experiences as they get involved on campus. Among other programs offered, all new students are required to attend a program during Weeks of Welcome where you will learn how things like hazing or hazardous drinking can occur, and how to respond if it does. Starting in August, you can preview the full Weeks of Welcome schedule including our signature events: New Student Convocation, UREC Fest, Playfair, Student Org. Night, Pep Rally, Block Party in the 'Burg and more!



Explore downtown Harrisonburg and collect your Friendly City swag at Block Party in the 'Burg.



Immerse yourself in JMU's state-of-the-art fitness and wellness center at UREC Fest.



Get hyped and get connected with peers at Playfair.



Discover ways to connect to new groups and clubs at Student Org. Night.



Embrace your Duke Dog spirit and learn athletic traditions at the Pep Rally.

Getting Involved!

JMU is an incredible community

because of the choices for active participation beyond the classroom.

Student Life

The [Student Life](#) team can help you find your place on campus and in the community. Joining student organizations is one of the primary ways to get involved, and comes with a lot of great benefits such as making friends and learning life skills. You can also find involvement through campus events, leadership development experiences, one-on-one consultations and more.



Madison Center for Civic Engagement

Dukes are voters and the [Madison Center for Civic Engagement](#) will help you register and learn about voting while also giving you a chance to talk across political and cultural differences about difficult issues. From Dukes Discourse Thursdays and educational primers on issues facing democracy, to our workshops on civic leadership and having difficult conversations, we'll help you constructively express your views, vote and be engaged civic leaders.



Center for Global Engagement

The [Center for Global Engagement](#) offers programs such as global mentorship, coffee hours, global virtual exchanges and workshops to engage JMU's globally-minded community. JMU truly has a world of opportunities! If you are considering studying abroad, it is never too early to start planning. We invite you to explore our full-semester and short-term programs to experience amazing cultures throughout the world.

Center for Multicultural Student Services

In addition to providing a home away from home to the multicultural community, [CMSS](#) promotes student success, holistic student development (academically, socially, culturally, professionally, and personally) and intergroup community engagement by cultivating and strengthening networking opportunities.

CMSS provides opportunities for students to develop a sense of belonging through staff, peer-to-peer connections and offering 50+ student affinity-based groups



including some fraternities and sororities. In addition, CMSS offers HRD 123, a three-credit course that develops leadership, facilitation and presentation skills to prepare students for college, the workforce and to lead peers through campus dialogues on critical topics. CMSS is open to all students and hosts a variety of opportunities to engage in experiential learning trips, leadership conferences and educational programs.

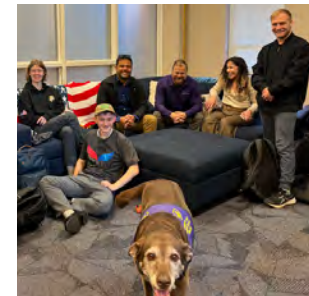
Community Engagement and Volunteer Center

Gain experience by getting involved in local or global communities through [CEVC](#). Students describe it as some of the most profound experiences of their college careers. There are countless ways to connect with the diverse local community, participate in CEVC's award-winning Alternative Breaks, and even work in the Harrisonburg community.



VALOR Resource Center

The [VALOR Resource Center](#) provides study space with computers and free printing, a fridge with free snacks and drinks, couches and even a massage chair to relax. It is open 24 hours a day with swipe access and all military connected students are welcome.



Spiritual Life & Well-Being (Religious Life)

A welcoming spiritual interfaith space to connect, reflect and build community. Individuals of all backgrounds are invited to enjoy a quiet place for study, prayer, mindful meditation or to attend programming hosted by more than 20 religious student organizations. For some, spiritual well-being is a profound way to find meaning in life, a sense of purpose, self-reflection and establish a sense of gratitude for yourself and others.

Parking & Transit Services

You have options when navigating around campus, the Harrisonburg community and beyond. Access information about bus schedules, regional transportation, ride-sharing, biking, walking and more at the [Alternative Transportation website](#).

Parking

First-year residential students are not allowed to have cars on campus. Approved first year commuter students have designated lots that they can park in once they purchase a JMU parking pass. The Parking website is a great resource for parking pass cost, making a purchase, event or visitor parking. For information on parking during Athletics events, visit [the Athletics website](#). If you are approved to park on campus as a commuter student, you must purchase a permit at jmu.aimsparking.com. All vehicles that are parked on JMU property, must be registered with Parking and Transit Services. Unregistered vehicles are subject to citation.

Bus service

The Harrisonburg Department of Public Transportation provides fare-free bus service for all JMU students. Bus routes begin at 7 a.m. and continue until about 11 p.m. on weekdays, with reduced schedules on weekends and holidays. The JMU Rideshare app provides point-to-point directions, bus routing, cycling and walking routes and carpool options. Several bus companies stop at Godwin Transit Center and provide transportation to local destinations, as well as airports and cities both in and out of state.

Biking

JMU is a Silver Level Bicycle Friendly University. There are over 10 miles of bike lanes on campus. If there is no bike lane, bikes are permitted to use the full car lane in the direction of traffic. Riders should obey traffic laws. Additionally, bikes are permitted on sidewalks and multi-use paths everywhere on campus. JMU strongly recommends wearing a helmet when riding on campus and locking your bike with a U-lock.



WEBSITE: [Alternative Transportation](#)



WEBSITE: [JMU Parking](#)

Include Environmental Sustainability in Your JMU Experience

Actions matter. We are a community committed to a sustainable future, and environmental stewardship is part of our culture. 71% of respondents to our Continuing Student Survey say it is important to them that JMU students make daily choices to help the environment. Every individual can make a difference for people and planet as a citizen, consumer and member of organizations and communities. Collectively, we can make a positive impact. In your role as a new JMU community member, regardless of your major, you should take two actions before arriving on campus: read the following description of JMU's environmental sustainability learning opportunities, and go to the website shown to plan how you will include environmental sustainability in your JMU experience.

Understand the Opportunities

The university fosters interdisciplinary education, literacy and research in sustainability. In addition to environment-focused concentrations and minors, there are many sustainability courses open to undergraduates through General Education. Study abroad, community service, civic engagement and research programs enable students from all majors to address environmental sustainability challenges. Students play an integral role in university efforts to build sustainable community through partnerships, outreach and service, including through participation in one of the many student organizations that are tackling sustainability issues.



Chart Your Path

Regardless of your major, you can graduate prepared to contribute to a sustainable future. Follow these three steps:

- ◆ **Learn more.** Select academic experiences that will develop your environmental stewardship knowledge and reasoning skills. Familiarize yourself with JMU's sustainability performance as an institution.
- ◆ **Do more.** Choose to participate in service activities and dialogues with others to create a healthier planet.
- ◆ **Lead.** Contribute to sustainable solutions by driving progress and innovating. For example, lead an undergraduate research project or a civic engagement initiative.



WEBSITE: [Environmental Stewardship](#)



Discover the Opportunities at JMU

7 Environmental **Minors**

7 Environmental **Concentrations**

80 Environmental **Courses**

Important Mobile Apps



Canvas

Access your classes and materials



Handshake Jobs & Careers

Receive personalized job and internship recommendations



TimelyCare

Provides 24-hour access to counseling and mental health resources



CBORD Mobile ID – for CS GOLD

Use as your virtual JACard for dining, vending and more



JMU Be Involved

Find student organizations or clubs that match your interests and events to attend throughout the year



JMU UREC

Allows access to UREC facilities and program registration



Okta Verify

Secure your digital accounts (MyMadison, Canvas, etc.) by using two-factor authentication



PassioGo

Catch a ride on a bus via the Harrisonburg Department of Public Transportation both on and off campus



JMU SHIELD

Receive important safety alerts and access campus safety resources.

JMU JARGON

CEVC is Community Engagement & Volunteer Center which connects you to volunteer opportunities.

Chips is a full-service convenience store located near the Bookstore.

D-Hall is an all-you-care-to-eat dining facility, located near the Quad.

Dukes, that's us! Our mascot, Duke Dog.

E-Hall is the all-you-care-to-eat dining facility on the east side of campus.

FLEX is a declining-balance account that you or your family can add money to.

FROGs are First year Orientation Guides who support you during Weeks of Welcome.

GenEd is the General Education Program, see page 20.

HD is your Hall Director who manages your residence hall.

JACard is your JMU Access Card.

LSS is Learning Success Strategies, an individualized academic coaching program available to all Dukes.

MOAT stands for Madison Orientation Adventure Trips. See Page 31 to learn more and register for a trip.

OPAs, Orientation Peer Advisers, will guide you through Summer Orientation and help run Weeks of Welcome.

PASS stands for Peer Assisted Study Sessions which are student-facilitated academic support.

Quad is the large grassy area in front of Wilson Hall and a popular spot to spend some downtime.

RA is your guide to on-campus living. Your Resident Adviser lives in your residence hall.

SSC is the Student Success Center. This space is full of resources to help you be more efficient, effective and engaged learners with space to study, collaborate and learn.

TDU is Taylor Down Under, a great place to hang out, play a board game with friends or study.

UREC is the University Recreation Center, a facility designed to promote healthy habits and active lifestyles.

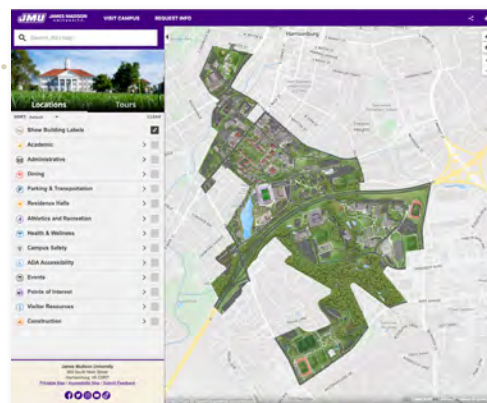
Questions?	Contact	Website	Phone Number
Athletic Ticket Office	athletic-ticket@jmu.edu	jmusports.com	540-568-3853
Card Services	cardsrv@jmu.edu	jmu.edu/cardctr	540-568-6446
Center for Global Engagement		jmu.edu/global	
International Student and Scholar Services	isss@jmu.edu	jmu.edu/global/isss	540-568-6119
Study Abroad	studyabroad@jmu.edu	jmu.edu/global/abroad	540-568-6419
Center for Multicultural Student Services	multicultural@jmu.edu	jmu.edu/multicultural	540-568-6636
Counseling Center		jmu.edu/counselingctr	540-568-6552
General Education Program	gened@jmu.edu	jmu.edu/gened	540-568-2852
Information Technology Help Desk	helpdesk@jmu.edu	jmu.edu/computing/helpdesk	540-568-3555
Office of Orientation & Transition	orientation@jmu.edu	jmu.edu/orientation	540-568-1787
Office of Disability Services	disability-svcs@jmu.edu	jmu.edu/ods	540-568-6705
Office of Financial Aid and Scholarships	fin_aid@jmu.edu	jmu.edu/financialaid	540-568-7820
Office of Residence Life	res-life@jmu.edu	jmu.edu/orl	540-568-4663
Office of the Registrar	registrar@jmu.edu	jmu.edu/registrar	540-568-6281
Veterans Benefits		jmu.edu/registrar/veterans	540-568-4769
University Advising	firstyearadvising@jmu.edu	jmu.edu/advising	540-568-3457
University Business Office	ubo@jmu.edu	jmu.edu/ubo	540-568-6505
University Health Center	healthctr@jmu.edu	jmu.edu/healthcenter	540-568-6178
University Recreation Center (UREC)	urec@jmu.edu	jmu.edu/recreation	540-568-8732

Campus Map

Our Campus Map is fully digital and interactive, allowing you to select from a number of filters.



WEBSITE: [Interactive Campus Map](#)



Academic Calendar



ACADEMIC CALENDAR



WEBSITE: [Academic Calendar](#)

Go Dukes!



James Madison University does not discriminate on the basis of race, color, national origin, religion, gender, age, veteran status, political affiliation, sexual orientation or disability with respect to employment or admissions or in connection with its programs or activities. Inquiries or requests for reasonable accommodation of disability may be directed to the activity coordinator or the appropriate university office.

GUESTS AND VISITORS:

Office of Equal Opportunity
540-568-6991 phone

STUDENTS WITH DISABILITIES:

Office of Disability Services
540-568-6705 phone



**JAMES MADISON
UNIVERSITY**

**Office of Orientation
and Transition**

MSC 1010
Student Success Center
Harrisonburg, VA 22807
540-568-1787 phone
orientation@jmu.edu
jmu.edu/orientation
2025