

THE TRANSFER

ONE BOOK 2025

JMU

**JAMES MADISON
UNIVERSITY.**



**Click
to get
started!**

Congratulations and welcome Dukes!

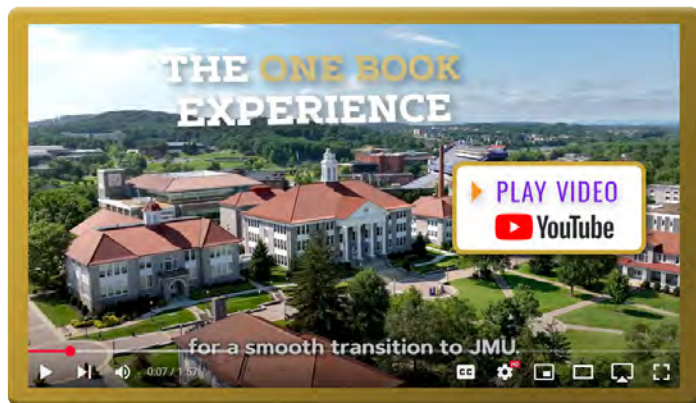
We are honored to welcome you to the James Madison University community! We hope you're excited for all that we have in store for you as the newest member of JMU!

Our goal is to ensure you have the tools to begin your journey at JMU. It all starts with The One Book Experience that will guide you through the next several months. Inside this digital book, you'll find key information to ease your transition to JMU as well as your New Student Checklist that outlines requirements with deadlines.



Let's Get Started!

Activate your eID | After paying your deposit, check your email to activate your eID, set up Okta Verify and create a new password! Access your New Student Checklist at jmu.edu/onebook by using your JMU eID and password. Your eID is your electronic identification used to access MyMadison, Canvas and other services.



This short video introduces you to The One Book Experience and the various ways you'll find information throughout the following pages.

LEGEND

The following icons appear throughout *The Transfer One Book* and serve to provide important step completion dates, help you make a quick jump to a page farther back in the book, get more information from a webpage or connect with a department by phone or email.

COMPLETE BY   Try It: **Click Here** WEBSITE: **JMU One Book**

 JUMP TO **Contents**  CALL: **JMU Number**

 send an email

NEW STUDENT CHECKLIST	DUE
Read <i>The Transfer One Book</i>	May 20
JMU Email Account	May 20
Transfer Student Survey	May 20
MyMadison Personal Information	May 20
Orientation Reservation & Declaring a Major	May 22
Disability Services Application (optional)	May 23
Placement Assessments	May 23
Prepare for Class Enrollment	May 27
Housing Search (On-Campus Deadline)	May 31
Academic Advising and Enrollment	June 5
Madison Money Manager	June 13
Financial Aid	June 14
JACard Photo	June 17
Pre-Entry Health Requirements	July 6
Pre-Weeks of Welcome Experiences	July 23
Better Conversations Together	Aug. 15
Community Expectations	Aug. 15
It's Complicated	Aug. 15
Success Programs	Aug. 15
Weeks of Welcome	Aug. 18
Dining and Meal Plans	Aug. 18
Official Transcript	Aug. 20

Contents



Click on any content title to jump to that page.

New Student Checklist.....	3
JMU Email Account	5
Transfer Student Survey.....	5
MyMadison Personal Information	5
Honor Code.....	5
Orientation Reservation & Declaring a Major	6
Explore Majors.....	7
Disability Services Application.....	9
Placement Assessments	10
Prepare for Class Enrollment.....	11
Housing Search	11
Academic Advising and Enrollment	12
Support for Your Transition.....	13
Technology	14
Textbooks	15
Madison Money Manager (M3)	16
Financial Aid	17
JACard Photo.....	18
Pre-Entry Health Requirements	19
Know the Student Handbook.....	20
Pre-Weeks of Welcome Experiences.....	21



Essential Programs.....	22
Better Conversations Together.....	22
Community Expectations	22
It's Complicated.....	22
Success Programs.....	22
Dining and Meal Plans	23
Weeks of Welcome	24
Getting Involved.....	25
Parking & Transportation	26
Official Transcripts.....	26
Environmental Sustainability	27
Mobile Apps	28
JMU Jargon.....	28
Campus Directory	29
Campus Map.....	29
Academic Calendar.....	29

Ready? Let's Get Started!

Read The **Transfer One Book**

COMPLETE BY



The Transfer One Book is designed to be your one-stop resource to provide you the necessary information and steps to be ready for your first semester at JMU. Each step on your New Student Checklist has additional information provided throughout the book.



JMU Email Account

COMPLETE BY



Log into your JMU Dukes email

account (eID@dukes.jmu.edu) so you can receive important university information. This is JMU's official means of communication with students as outlined in JMU Policy 1209: Electronic Messaging. Make a habit of checking it daily!



Transfer Student Survey

COMPLETE BY



We have a few questions to help us learn about your previous college experience, work habits and expectations for your JMU career. Hearing from you helps us improve our programs. This isn't a test, so there are no right or wrong answers.



MyMadison Personal Information

COMPLETE BY



Now that you have decided to join the JMU community, it is important to keep your information updated in MyMadison.

Emergency Contact Information: The university may need to contact your family in the event of a personal emergency or crisis. Sit down with your family to determine who you should list as your emergency contact(s).

Emergency Notification: JMU uses a text-based system to inform the campus community in the event of an active shooter or other life-threatening event. You are required to provide your cell number in MyMadison so we can send you emergency notification messages.

Criminal History: JMU is committed to providing a safe living and learning environment for all community members. As a condition of enrollment, all students are required to answer the questions prior to enrollment.

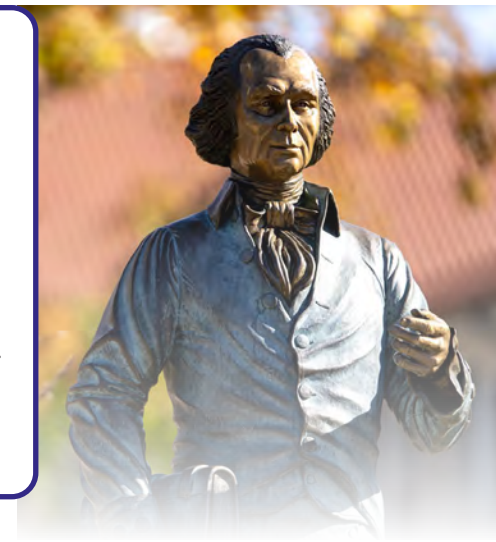


Honor Code

Academic integrity is a serious matter at JMU. Suspension or expulsion are possible penalties for violating the Honor Code.

Cheating, copying, plagiarizing, improper citations and buying or using papers written by someone else are a few examples of violations that have the potential to jeopardize your status as a student.

When you take placement assessments (see page 10), you are bound by the JMU Honor Code. We want you to have a successful experience and it is imperative that you are in the right class for that to happen. [Complete the test](#) by Oct. 1.





Get to know our 2025 Orientation Peer Advisers!



Orientation Reservation & Declaring a Major

COMPLETE BY



Summer Orientation is a one-day program where you will learn about student expectations, campus resources and engage with your Orientation Peer Adviser and other new transfer students. Summer Orientation is available both on campus and virtually though we recommend attending on campus.

This step must be completed to be able to enroll in fall classes. You will receive an email once the step is submitted fully as well as an event reminder a few days prior to your reserved day. If you cannot attend any dates, please be sure to select Unable to Attend within the reservation.

- ♦ **On Campus: June 23 and July 10 | 7:45 a.m. - 5 p.m. | Student, Families & Supporters**
Dates are first-come, first reserved. We encourage you to complete your steps as soon as possible to have access to your preferred date. Families and supporters will have their own schedule to attend separate sessions about services and resources to best support you. Invite up to two guests to attend and register them in this step. Provide your guest's email address when you register them, so they receive event registration details.
- ♦ **Virtual: July 17 | 11:30 a.m. - 4:30 p.m. EST | Students only**
Be sure to select July 17 when making your reservation. You will receive an email to your JMU account with your personalized link to join live sessions. Make sure your camera, microphone and speakers are in good working order so you are ready to engage with each session.

Accommodations

If you or your guest(s) need accommodations during your Orientation day, please submit your request in the Accommodations section when you complete your reservation. Accommodations may be provided for individuals needing language interpretation (including American Sign Language) and/or assistance for limited mobility, hearing difficulties and impaired vision. Submit requests for accommodations at least 10 business days before your reserved date. You will receive a confirmation email once it has been received.

Orientation and Transition Fee

All new students are charged \$200, regardless of attendance at Orientation. This fee covers your Orientation day, Weeks of Welcome and other transfer programs. You don't have to pay the Orientation and Transition fee now, but if you have an installment payment plan, make sure your budget includes this fee.



WEBSITE
Orientation & Transition



Detailed Orientation schedules, hotel accommodations, parking and additional resources for the transition.

Explore Majors

Transfer students who arrive at JMU with 30 credits or more are required to choose a major. If you transfer with less than 30 credits, you can select “Exploratory” with prior approval from [JMU Next Transfer Advising](#).

Majors

College of Arts and Letters

Anthropology
 Communication Studies
 English
 Global Religions and Cultures
 History
 International Affairs
 Justice Studies
 Media Arts and Design
 Modern Foreign Languages
 Philosophy
 Political Science
 Public Administration
 Sociology
 Writing, Rhetoric and Technical Communication

College of Business

Accounting
 Business Management
 Computer Information Systems
 Economics
 Finance
 International Business
 Marketing
 Quantitative Finance

College of Education

Elementary Education
 Inclusive Early Childhood Education
 Middle Grades Education
 Secondary Education
 Special Education

College of Health and Behavioral Studies

Communication Sciences and Disorders
 Dietetics
 Health Sciences
 Health Services Administration
 Kinesiology
 Nursing
 Psychology
 Social Work

College of Integrated Science and Engineering

Computer Science
 Engineering
 Geography
 Information Technology
 Integrated Science and Technology
 Intelligence Analysis

College of Science and Mathematics

Biology
 Biophysical Chemistry
 Biotechnology
 Chemistry
 Earth Science
 Geology
 Mathematics
 Physics
 Statistics

College of Visual and Performing Arts

Architectural Design ¹
 Art ²
 Art History
 Dance ¹
 Graphic Design ¹
 Industrial Design ¹
 Music ¹
 Musical Theatre ¹
 Theatre ¹

Hart School of Hospitality, Sport and Recreation Management

Hospitality Management
 Sport and Recreation Management

University Studies

Independent Scholars

PRE-PROFESSIONAL PROGRAMS

Pre-professional programs consist of courses and experiences designed to prepare you for the required graduate study and/or licensure necessary for a career in your chosen field.

Pre-Athletic Training	Pre-Occupational Therapy	Pre-Physician Assistant
Pre-Dentistry	Pre-Optometry	Pre-Secondary Education
Pre-Law	Pre-Pharmacy	Pre-Theology
Pre-Medicine	Pre-Physical Therapy	Pre-Veterinary Medicine



¹ There are additional requirements when declaring this major.

² You must pass a portfolio review if you are pursuing a B.F.A. in Art. The B.A. or B.S. in Art does not have this requirement.



WEBSITE: [Academics – Undergraduate Majors](#)

Teacher Licensure

All JMU teacher education programs are designed to meet a vital and nationwide need for trained and committed teachers. Many of JMU's teacher licensure programs can be completed in 4 years through completion of an undergraduate major and some can be completed in 5 years through completion of a combined Bachelors and Master of Arts in Teaching program.

To gain the skills needed for this challenging profession, some programs require additional content, such as a second major or minor.

In the 4-year licensure programs, students will be eligible for their teaching license at the end of their undergraduate career. Students could choose to apply for and participate in a Master of Education program after the completion of the 4-year licensure undergraduate program.

In the 5-year licensure programs, students will be eligible for their teaching license at the end of their graduate career.

See the table to the right to help you determine the major you should select in your *Orientation Reservation and Declaring a Major* step. Keep in mind that admission to a teacher licensure preparation program is not automatic — your academic advisor will provide you more information about admission requirements.



WEBSITE: [Academic Program Details](#)

Graduates who complete any education program at JMU will meet qualifications for initial licensure in the Commonwealth of Virginia.



WEBSITE: [Licensure or Certification Outside Virginia](#)



TEACHER EDUCATION

To pursue a JMU licensure program, follow the table below.

LICENSURE AREA	ONE BOOK MAJOR	ADDITIONAL REQUIREMENTS
Art Education	Art, Design or Art History	
Dance Education	Dance	
English as a Second Language (PreK-12)	Teaching English to Speakers of Other Languages	
Elementary Education (PreK-6)	Elementary Education	
Inclusive Early Childhood Education (PreK-3 and Early Childhood Special Education)	Inclusive Early Childhood Education	
Middle Education (6-8)	Middle Grades Education	Minor in English, Mathematics for Elementary and Middle Grades Teachers, Middle Grades Science or Social Studies
Music Education (PreK-12)	Music	
Physical & Health Education (PreK-12)	Kinesiology	
Secondary Education (6-12)	Secondary Education	Second major in Biology, Chemistry, Earth Science, English, History, Mathematics, Physics or Political Science
1. 4-year with licensure (undergraduate only)		
2. 5-year with licensure (undergraduate + graduate)	Biology, Chemistry, Earth Science, English, History, Mathematics, Physics or Political Science major	In the pre-professional program dropdown, select Pre-Secondary Education as a minor.
Special Education (K-12)	Special Education (concentration in general and adapted)	
Theatre Education (PreK-12)	Theatre	

Disability Services Application

COMPLETE BY



The Office of Disability Services

approves accommodations for disabilities and/or major health impairments that affect your life. If you would like to apply for accommodations at JMU, you will need to complete this step. There are three phases for requesting accommodations:

1. Complete the Disability Services Application

Review JMU's Disability [Documentation Guidelines](#) to determine what documentation you need to upload to your application. You can apply for academic accommodations and/or housing accommodations using the Accommodate Portal System.

2. ODS reviews

ODS strives to review all new applications with documentation within 15 business days.

3. ODS contacts you

ODS staff will contact you at your JMU email with instructions for your next steps.

Q: What does it mean to have a disability?

A: A disability is a condition that causes significant challenges in a major life activity, like learning, walking, seeing, etc. This includes disabilities such as ADHD, psychological conditions, learning disabilities, chronic illnesses, visual impairments, hearing impairments, orthopedic impairments and many more.

Q: Does a diagnosis of anxiety, depression, autism, diabetes, etc. mean I can get accommodations?

A: Maybe. ODS must go through a process to determine eligibility for accommodations. If you experience challenges due to your disability and you have current documentation, you can request accommodations. ODS will review your request in the context of programs, courses, activities, etc.

Q: What documentation do I need?

A: The documentation you upload with your application should be 1) completed entirely by a qualified clinician, 2) provide current and comprehensive information about how your condition impacts you as an adult and 3) describe the accommodations you need in a college setting.

Q: What accommodations does JMU offer?

A: You can find a list of [our most frequently used programs and accommodations](#) on our website. Each student's needs are unique, so think about what you need and request accommodations accordingly.



WEBSITE: [Office of Disability Services](#)

Placement Assessments

COMPLETE BY



To assist you in making sure you are only taking the courses needed as you transfer to JMU, you should evaluate whether you need to take the ALEKS Math Assessment and Foreign Language Placement Exam. These assessments are only required for some transfer students depending on your major and previous coursework. Use the decision tree surveys to determine whether you need one or both assessments.

ALEKS Math Assessment

The ALEKS Math Assessment is a 25-item, open-response, web-based math placement assessment used to assess your current working knowledge of math principles from algebra through precalculus. Please allow three hours to complete the exam. Your score will be available in MyMadison within 24 hours of completion. You can take the ALEKS assessment up to three times. In order to retake the assessment, you must wait 48 hours after you have taken the assessment and spend at least three hours in the Preparation and Learning Modules provided in the ALEKS. The highest score of all attempts will be used. [Complete the Math Assessment decision tree.](#)

Foreign Language Placement Exam

Foreign Language Placement Exams are offered in order to determine the placement of a student who is continuing the study of a language at JMU. The exams include reading comprehension, vocabulary and grammar questions. French, German, Russian and Spanish are online only, and additional languages are available upon request. You may take the exam only once per language every three semesters. There is not a time limit, so please take your time! You will need to take the FLPE if all the following three statements are true:

- ◆ You are pursuing a program of study that leads to a Bachelor of Arts or a Bachelor of Business Administration degree that requires a foreign language (see the list at right); and
- ◆ You have taken two or more years of French, German, Italian, Russian or Spanish in high school; and
- ◆ You have not taken the SAT II in that language.

Still not sure if you need to take the FLPE?

[Complete the decision tree.](#)



WEBSITE: [Learn more about the FLPE](#)



Be sure to adhere to the JMU Honor Code when taking these assessments. (see page 5)

Anthropology *
Art *
Art History
Biology *
Communication Sciences and Disorders *
Communication Studies *
Dance
Earth Science
Economics *
English
Geography *
Global Religions and Cultures
History
Independent Scholars *
International Affairs
Justice Studies *
Mathematics *
Media Arts and Design *
Modern Foreign Languages
Music
Musical Theatre
Philosophy

Physics *
Political Science
Psychology *
Sociology *
Theatre
Writing, Rhetoric and Technical Communication *

Programs leading to a B.B.A. Degree

International Business

* These programs provide the option to pursue either a Bachelor of Arts or a Bachelor of Science degree. B.S. programs do not have foreign language requirements, so you would not have to take the placement exam unless you wanted to continue your language studies at JMU.

Prepare for Class Enrollment

COMPLETE BY



It's time to plan for your first semester of classes at JMU! To be ready to work with your advisor to choose classes, you will need to complete and have a

solid understanding of the Transfer Enrollment Modules in Canvas, JMU's online learning platform. You will learn about your transfer credit, graduation requirements, courses needed for your major or General Education and more. You should review your transfer credit report in MyMadison. It includes information about how your credits will transfer to JMU. Reviewing your transfer credit report is an important step to ensuring you enroll in the correct classes during the enrollment process. There is a lot of information in the modules, so give yourself plenty of time to work through them.

If you have completed all previous steps, you can begin working with your advisor on May 27 and start enrolling in classes on June 3. Learn more on the next

Important Enrollment Dates

Academic Advisors Reach Out	May 27
Enrollment Webinar	June 2, 7 p.m.
Enrollment Begins	June 3
Enrollment Closes	July 17
Open Enrollment Begins (all students)	Aug. 1, 8 a.m.

page. In the meantime, don't worry about availability if some of the courses you need are closed. We hold seats for transfer students in many classes.

Housing Search

On Campus

Living on campus is a great way to connect to the JMU community. Residence Life is happy to offer a limited number of housing contracts in upperclass residence halls. Housing contracts will open on April 1. All these buildings are air-conditioned and most have suite-style or private bathrooms. You can sign a 2025-26 contract and select a required on-campus meal plan within this step. The deadline to sign your contract is May 31, unless we reach capacity prior to that date. You must select a roommate in the Online Housing System by June 13. You will receive your room assignment via email by July 1. Contact Residence Life with any questions.

COMPLETE BY



res-life@jmu.edu



CALL: 540-568-4663

Off Campus

Looking for off-campus housing? Follow Off-Campus Life's advice to obtaining housing in Harrisonburg.

1. Determine which living arrangement best suits your personality. Are you interested in rooming with a group of students or is living solo your first choice? Be honest with yourself.
2. Check the OCL website to search for places to live and connect with other JMU students who are looking for roommates.
3. List at least three places to visit and make an appointment to tour the property. If you are looking for a roommate, most property owners will be happy to help place you with another JMU student.



WEBSITE: [Off-Campus Life](#)



CALL: 540-568-6071

ON & OFF CAMPUS INFO:

Housing Related



JUMP TO [JMU Dining and Meal Plans](#)



JUMP TO [Parking & Transportation](#)

Academic Advising and Enrollment

COMPLETE BY



At JMU, we want to make sure you are able to enroll in the classes you need to progress efficiently toward graduation. We dedicate a week at the end of May for you to work with your academic advisor before enrollment opens on June 3. You must have completed the *Orientation Reservation & Declaring a Major* step to be assigned an academic advisor and to enroll.

Academic Advising

You will be assigned an academic advisor in your major, who will reach out to you through your JMU email by May 27 to begin the advising process. Your advisor will check in with you about your goals, review your previous coursework and help you determine which classes to take in your first semester here. If you have questions related to academic advising before May 27, email the [JMU Next Transfer Advising Team](#).



Enrolling in classes

Class enrollment takes place in MyMadison and the time you are allowed to enroll is called your enrollment appointment. Most enrollment appointments will be from June 3 through July 17. Enrollment reopens to all students on August 1. We recommend waiting to add courses to your shopping cart until your enrollment appointment opens. Putting a course in your shopping cart does not guarantee you a seat, and course availability will vary during your enrollment appointment. Make sure you complete all necessary enrollment steps and click “Finish

Enrolling.” We strongly encourage you to have your schedule finalized by June 5 so your enrollment is complete prior to first-year students starting their advising and enrollment process.

Reviewing your schedule

After you finish enrolling, you can follow up with your advisor to review your schedule. Plan to attend Orientation enrolled in a fall schedule of 12-17 credit hours. The JMU Next Transfer Advising Team will be on hand at Orientation to answer general questions though you should work with your assigned academic advisor about more specific, individualized questions prior to attending Orientation.

Class enrollment begins on June 3!



RELATED INFO:

Textbooks & Computers



JUMP TO **Textbooks**



JUMP TO **Technology**



Support for Your Transition



Free tutoring

[The Learning Centers](#) offer online and in-person learning assistance through the following programs:

- ♦ **Academic Coaching** helps students develop skills and strategies that support academic success.
- ♦ **The Communication Center** assists with speech preparation and practice.
- ♦ **Peer Assisted Study Sessions** offer review sessions twice a week for specific supported courses.
- ♦ **The Science and Math Learning Center** provides tutoring for introductory science and math classes.
- ♦ **The University Writing Center** offers writing consultations for all majors for writing tasks.

Study Abroad

It's a myth that transfer students can't study abroad! Start planning now, work closely with your academic advisor and [browse the 90+ programs available](#).

Counseling Connections

[Counseling Connections](#) is a program to assist incoming students with previous or existing mental health concerns in connecting with appropriate mental health resources. Students who are currently connected with a provider are strongly recommended to maintain care with those providers. If unable to do so, contact the Counseling Center to schedule a Counseling Connections phone call.



Libraries

At JMU, the [Libraries](#) support your academic and creative success. Multiple library locations offer comfortable and safe places to learn, explore and collaborate. In our makerspace, you can craft and invent with technologies including 3D printers, virtual reality, sewing machines and more.

The Libraries' knowledgeable staff and faculty are eager to help you find the tools and resources you need, whether at a service desk, via online chat, in a workshop or by appointment. As you progress in your studies, you will meet your librarian – there is one for each major! An expert in research resources, your librarian can provide you with personalized support in finding, evaluating and using information for assignments, research projects and more.

Learning Success Strategies

[LSS](#) enhances educational outcomes for all students through training in various learning strategies. Based on strengths, weaknesses and specific class demands, these strategies are modified according to academic progress or changing needs.



Technology

Use the **Quick Start Guide** for information on:

- ◆ Installing Microsoft Office & other software
- ◆ How to access the Internet on campus
- ◆ Computer recommendations
- ◆ MyMadison
- ◆ Setting up your TV on campus

For additional support, contact the IT Help Desk:



WEBSITE: **Quick Start Guide**



CALL: **540-568-3555**



helpdesk@jmu.edu

Computer Security

Computer crime is much more common and easier to perform than people realize. Keep your computer running well by using tips and security information from the Quick Start Guide.

Computer Labs

Over 500 computers are available in computer labs throughout campus, including two 24/7 labs and three assistive technology labs. All labs offer a wide variety of software and printing (debited from your FLEX) to provide you with technology resources needed for preparing assignments, conducting research and other academic needs.

Windows or Mac?

Visit JMU's Computer Recommendations for Incoming Students to see which operating system and computer configuration is best for your major. Information Technology strongly discourages the use of Chromebooks.



Tech needs?

The Madison CyberZone, within the Bookstore, offers computer systems, software and peripherals at special academic pricing. The CyberZone also provides computer hardware and software recommendations by major. The CyberZone partners with JMU Information Technology and academic departments to make sure all of its computers meet class requirements. CyberZone systems meet or exceed recommended specifications and receive on-campus warranty service.

Madison CyberZone is an Apple Authorized Service Provider and Dell computer warranty repair center, providing both in and out of warranty repair. These services include:

- ◆ Testing, diagnosis and replacement/repair of Apple and Dell systems
- ◆ Accidental Damage repair under AppleCare+ for Mac
- ◆ Accidental Damage repair under Dell's CompleteCare
- ◆ Facilitating shipping for Dell's Mail-in warranties
- ◆ Limited out-of-warranty support for other brands of computers



For hardware warranty repair information, call the Madison CyberZone at 540-568-3989 or visit the Quick Start website.

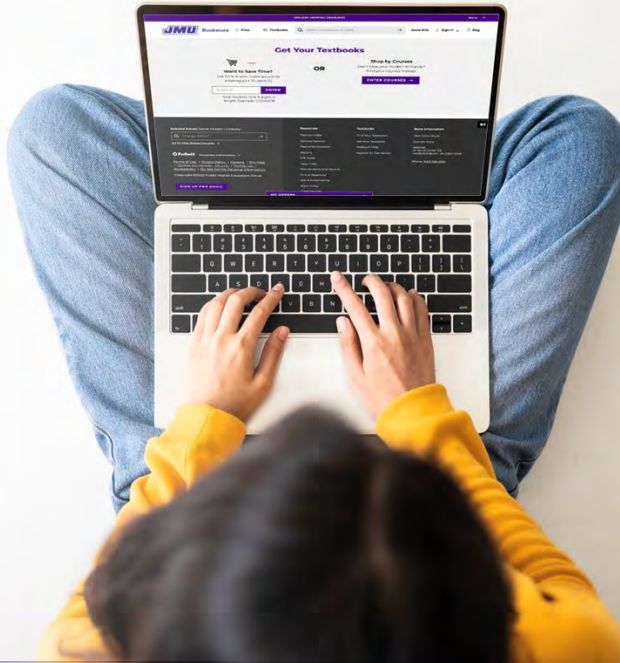
JMU Bookstore computers include	Apple	Dell
At least 3-year on-campus hardware warranty support (Laptop batteries are considered consumable and are typically covered for only one year. See more information here.)	✓	✓
On-Campus Accidental Damage Repair (AppleCare+ for Mac) (Dell CompleteCare)	✓	✓
Loaner Program (The CyberZone has a limited number of loaner laptops available while your computer is being serviced)	✓	✓

Textbooks

Once enrolled in your classes, you'll be able to pre-order your textbooks. At JMU's bkstr.com page, click Textbooks and enter your JMU ID number. Once there, you will see all the books you need for your classes through the bookstore.



WEBSITE: JMU Bookstore



Textbook Type	Traditional	Rental (select titles only)	Digital Textbooks (select titles only)
Media Format	Hardcopy	Hardcopy	Digital
Usage Period	You own it	1 Semester	Varies by publisher
Re-sellable	Depends on demand and condition of book	No	No
Price	New: Standard Used: Save 25%	Save 40-80%	Save up to 60%
Take Notes and Highlight	Yes	Yes	Yes
Requires computer	No	No	Yes (or tablet)
Requires Internet Access	No	No	Yes



Madison Money Manager (M3)

COMPLETE BY



The **University Business Office** is where you'll find everything you need to know about tuition and fees, payment options, due dates, etc. If you have questions, view our "[Start-Here](#)" page for additional information.

Statement and payment information

Madison Money Manager gives you and anyone else you choose access to your student financial account. Access M3 through MyMadison and set up authorized users so they can view your statements and account activity, as well as talk to UBO about your student account — only authorized users are allowed to discuss your financial account with UBO. You, and all your authorized users, will receive an email when a statement is available. Set up your authorized users in M3 before the step deadline to ensure notification of the semester statement.

Payment options

Charges not covered by financial aid or the installment payment plan are due in full by the semester due date. Pay your charges through M3, by mail or in person at the cashier counter. Send outside scholarship information to UBO for processing. Include your full name and student ID number for proper identification.

Installment payment plan

To pay your education expenses monthly, use the payment plan offered through Flywire. The payment plan is available for a small enrollment fee. Enrollment for the upcoming year begins on June 1 and ends on the semester due date. Contact UBO or visit our [website](#) for help determining a budget.

Refunds

Grants, loans and scholarships are credited to your account in the order that JMU receives them. Refunds are generated automatically for financial aid overpayments and upon request for personal overpayments. Set up direct deposit immediately following Orientation to ensure you get your refunds as quickly as possible. Watch for an email from BankMobile Disbursements that has instructions about setting up a refund preference once your account has been activated. Even if you don't think a refund will occur, go ahead and set up a preference in case you receive a reimbursement of any sort in the future. Parent PLUS loan refunds are mailed to the parent unless otherwise noted on the loan application.



WEBSITE: [University Business Office](#)

RELATED INFO:

Financial Aid

Read more about the various options for Financial Aid at JMU.



JUMP TO [Financial Aid](#)



Financial Aid

COMPLETE BY



Follow these guidelines to be considered for financial aid:

- ◆ All students (and parents) are encouraged to review *JMU Terms and Conditions of Financial Aid – Consumer Information* at jmu.edu/financialaid for more information regarding financial aid and required disclosures.
- ◆ Complete your Free Application for Federal Student Aid online at studentaid.gov by the priority deadline of March 1. JMU's Title IV Federal School Code is 003721.
- ◆ Notify the institution you are transferring from to cancel your financial aid since you will be applying for aid at JMU.
- ◆ Monitor your JMU email closely in case additional information is needed to complete the FASFA review.
- ◆ Accept or decline your Official Financial Aid Offer in MyMadison once you have received notice to your JMU email. Offers generally begin around the end of June and some may require additional documents to be submitted.

Student Loans

- ◆ Federal Direct Loans require you to complete a Master Promissory Note for JMU and Entrance Counseling. You should accept or decline in MyMadison.
- ◆ Private Loans are an option, too. Learn more about [private or alternative loans](#).

Parent Loans

If you plan on borrowing a Federal Direct Parent PLUS Loan you must also apply online at studentaid.gov. To meet federal loan requirements, parent borrowers must complete their Master Promissory Note for JMU.

Grants

If you are eligible for Federal (Pell) or State Grants (Commonwealth or VGAP), this information will be listed on your Official Financial Aid Offer.

If you have questions . . .

You must have your nine-digit JMU ID number ready.



WEBSITE: **Financial Aid**



CALL: **540-568-7820**



fin_aid@jmu.edu



WEBSITE: **Student Employment Opportunities**



Looking for a job?



JACard Photo

COMPLETE BY



Your **JACard** is your official JMU identification card for most on-campus services. Your card is active one week before classes start and throughout your time enrolled at JMU. Your ID number, a nine-digit number on the front of your JACard, will serve as your primary identifier for services on campus.

Follow the guidelines to submit an acceptable photo for your JACard. Within 72 hours of submitting, you will receive an approval or rejection email from Card Services.

CBORD MobileID is the Android- and Apple-compatible app version of your JACard. Using this app serves as a supplement to your JACard on campus.

Use your JACard to:

- ◆ Register your vehicle
- ◆ Check out materials from the libraries
- ◆ Gain admission to athletic events
- ◆ Receive services from the University Health Center
- ◆ Use your meal plan and Dining Dollars at various dining locations
- ◆ Access computer labs and campus printing
- ◆ Access UREC and check out equipment
- ◆ Purchase tickets to concerts
- ◆ Use FLEX at on- and off-campus merchants



Lost or stolen cards

Report loss or theft of your JACard [online](#) or call Card Services at 540-568-6446 during normal business hours. After 5 p.m. contact Campus Police at 540-568-6912.

FLEX it

Your FLEX account is a pre-paid debit account. It works like a checking account without having to write checks, pay a service fee or balance your account. There are no annual fees. Your account opens when you enroll.

You can add money to your account by phone, mail, in person or online. You can also add FLEX via a credit card (MasterCard, VISA, Discover and American Express). You can also use the cash-to-FLEX stations around campus to add cash to your account at any time.



WEBSITE: [Card Services](#)



CALL: [540-568-6446](tel:540-568-6446)



JUMP TO [Dining and Meal Plans](#)



Pre-Entry Health Requirements

COMPLETE BY



State law requires students to submit specific information about immunizations and complete a TB assessment form (six questions). Immunizations must be up to date. Any official immunization record will be accepted. JMU does not require a physical exam, but you must complete the following:

1. Log onto [MyJMUChart Patient Portal](#) to check the status of your immunizations, complete the TB Assessment and upload your insurance information.
2. Continue checking your JMU email and secure messages on MyJMUChart Patient Portal for confirmation that your record has been verified and is complete. Your pre-entry health requirements are not complete until you receive that confirmation. An enrollment hold and fine will be placed on your account if your immunizations are not deemed complete by the Health Center staff.



Having trouble accessing MyJMUChart Patient Portal?

Please follow these tips:

- ◆ Google Chrome is the preferred web browser.
- ◆ Clear your browser history or cache before starting.
- ◆ Avoid Apple devices to access MyJMUChart Patient Portal.
- ◆ Contact the Health Center at 540-568-6178, option 2, during business hours if issues continue.

Tips for transiting to self-managed health care

- ◆ UHC is a confidential resource.
- ◆ Students can select whether to share information from each visit and with who.
- ◆ A Medical Power of Attorney is not needed for UHC
- ◆ Students are responsible for managing their oral medications.
- ◆ Confirm that current insurance will cover you while at JMU for specialists or emergency care.
- ◆ Check out the on-campus pharmacy or locate the closest local pharmacy.
- ◆ Consider getting a 90-day supply of any oral medications or using a mail order option.



Know the Student Handbook

Office of Student Accountability and Restorative Practices supports the JMU mission by facilitating student development and restoration through a fair process that holds students accountable to community and university standards to support student and community success. OSARP *CARES* about student, organizational and community success through the following values: **C**ollaboration, **A**ccountability, **R**estoration, **E**ducation and **S**upport.

Who is considered a student by OSARP?

The term “student” includes all persons who enroll or take courses at JMU. Generally, “student status” begins at the payment or waiver of the deposit for admission and will continue through the verification of the completion of all academic requirements for a declared degree program(s). Refer to the [Student Handbook](#) for the full definition and additional details.

Standards of conduct, policies and accountability procedures

It is your responsibility to know and follow federal, state and local laws as well as JMU policies. The Student Handbook contains all standards of conduct and policies and full definitions for students, recognized student organizations and student groups, explains OSARP’s accountability processes and outlines the processes to address allegations of hazing, sexual misconduct and Title IX sexual harassment. It is important to know that processes and policies can change; the online Student Handbook is the current version used by OSARP. When changes are made, OSARP notifies the university community via your JMU email.

Using your voice on campus

An engaged university is one where its members use their voices. As a citizen and a member of our commu-

nity, the right to use your voice is protected by the First Amendment and the university has processes to address First Amendment violations. [JMU Policy 1121](#) outlines both protected speech and restrictions that can be placed on speech due to time, place and manner. There is also information about freedom of association under the First Amendment and directions to the grievance procedures if you feel your First Amendment rights are violated.

How will a student, recognized student organization, or student group be notified of an alleged policy violation(s)?

OSARP will send notification of an alleged policy violation(s) to a student’s JMU email. For a recognized student organization or student group, the student who receives notification of an alleged policy violation(s) is typically the President or Team Captain, who responds on behalf of the organization or group. The notification of an alleged policy violation(s) contains important information about the case, including the date, time and location of a meeting to discuss the case or to review the accountability process that will occur.

Strategies for alcohol and drug violations

OSARP uses four strategies for Alcohol and Drug violations for individual students: Three Strikes, Parent/Guardian Notification, Off-Campus Response and the Enlightened Citizen Amnesty Process (ECAP). For more information on these strategies, please refer to the [Alcohol/Drug Information](#) section of the Student Handbook.

Reporting alleged misconduct to OSARP

Any JMU student, faculty or staff member wanting to report or explore their [reporting options for alleged misconduct](#) involving an individual student, recognized

student organization or student group should contact OSARP. Reports submitted by non-JMU individuals will be evaluated based on the jurisdiction criteria in the Student Handbook.

Think before you post!

Online communities provide great forums to stay in touch with friends, meet new people, share pictures and express yourself. Know that items on social media can be evidence in the criminal/civil court process and campus accountability processes. Social media often display viral trends that some students may find funny. However, these trends may be considered a violation of university policy. As such, OSARP may review cases for students participating in viral social media trends if the behavior might violate university policy, as outlined in the Student Handbook.

Restorative Practices

OSARP uses [restorative practices](#) to address conflict and harm as well as build community. We work with those impacted by harm or involved in a conflict to explore ways to repair the harm or address the conflict. This approach allows individual growth, promotes accountability and empowers participants to develop solutions.

If you have questions . . .



WEBSITE: **OSARP**



CALL: **540-568-6218**



osarp@jmu.edu

Pre-Weeks of Welcome Experiences

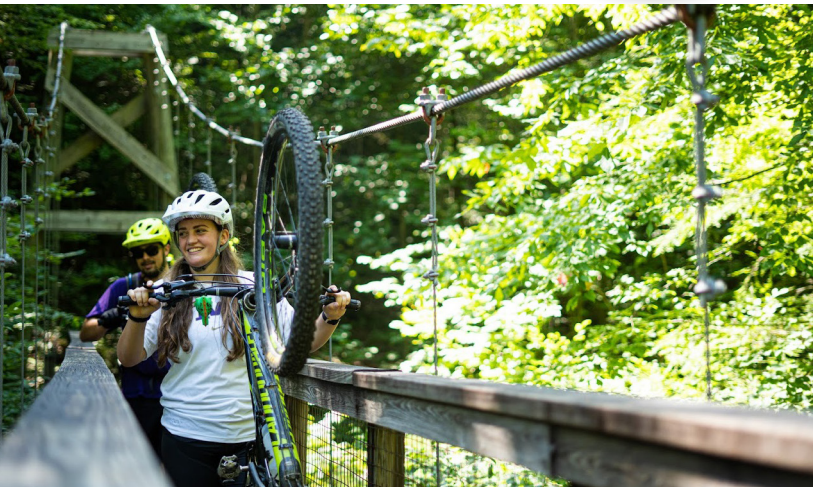
COMPLETE BY



Prior to the official start of the fall semester, students have the opportunity to engage in a Pre-Weeks of Welcome experience. These experiences are a great way to ease into the JMU community, start making connections with other new students in small groups and offer early on-campus move-in, all before Weeks of Welcome officially begins. We encourage you to explore more about each ptogsam and prepare to immerse yourself in an unforgettable experience. Registration will open on May 1 and additional cost may be required.

Madison Orientation Adventure Trip

MOAT, hosted by UREC, is a three-night, four-day adventure program designed for new students. Students will meet up with student trip leaders to tent camp, rock climb, hike and canoe in the Shenandoah Valley. No experience is necessary! There are also multiple MOAT trips across the summer.



PRE - WEEKS OF WELCOME

Mosaic Connections

MC, hosted by the Center for Multicultural Student Services, is designed to empower, support and inspire student success by fostering a strong sense of belonging and personal growth. Through meaningful connections, access to campus and community resources and opportunities for holistic development, students will build supportive networks, develop skills for academic and personal success and explore the value of shared spaces in a welcoming JMU environment.



WEBSITE: [Pre-Weeks of Welcome](#)

Dukes Making a Difference

DMAD will allow you to connect with other service-minded students while volunteering with local non-profits. Learn about Harrisonburg's most pressing social issues. No experience necessary; come ready to learn and serve together!



Dukes Career Connections

DCC, hosted by the University Career Center and University Advising, will connect your academic and career plans; build community through connections with peers, alumni and employers; and set achievable goals for your success. All are welcome whether you are sure about your career path or are still developing your academic and career goals.



Essential Programs

COMPLETE ALL FOUR BY



Better Conversations Together

Talking constructively across differences is one of the key 21st century skills you will need to succeed. The program provides an engaging and multifaceted opportunity for you to build dialogue skills early in your college career.

You will begin by completing two online lessons in Perspectives, focusing on how we think and process information, as well as how your moral foundations shape how you talk and listen to others' views. During the fall semester, you will participate in a small group, peer-facilitated deliberation to practice talking across divides to find common ground on a difficult, wicked issue. You will receive a certificate of completion at the end of the program.

Community Expectations

At JMU, we are deeply committed to the health, welfare and success of our students. We have strategically implemented research-based prevention programs necessary for you to make healthy choices. We require all incoming students to complete these online programs.



Success Programs

JMU provides many resources to support your success as you start your college career. The Incoming Student Skills & Attitudes Questionnaire (ISSAQ) provides you, your advisor and JMU an important snapshot of your strengths and opportunities for growth. New Dukes 101 is a one-credit student success seminar designed for

incoming students to prepare for success at JMU. Other success initiatives include student success coaching, early student success system and more!



It's Complicated

How can you go on to make good decisions in college and beyond? JMU's ethical reasoning program offers a simple but powerful strategy to help you make better, more ethical decisions in everyday life.

The Ethical Reasoning in Action strategy involves asking Eight Key Questions to approach decisions with curiosity and consideration for others. Asking the 8KQ helps us move from reacting to responding, which improves the way we engage with the complex situations we face in our personal, professional and civic lives.

Ethical reasoning, like writing or verbal communication, is a skill developed with practice. Begin by completing the It's Complicated Canvas course. You will learn about the 8KQ and how others use the strategy, discover your ethical reasoning preferences and encounter a challenging dilemma.





Dining and Meal Plans

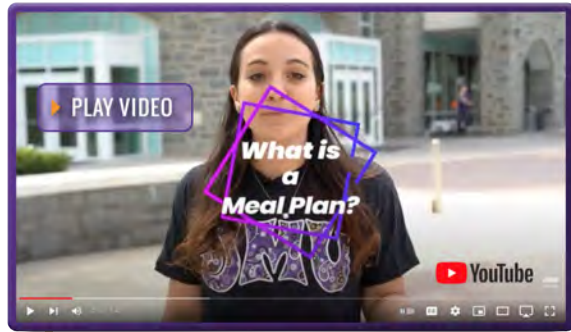
COMPLETE BY



JMU Dining boasts an award-winning culinary program landing at the top of *Princeton Review's* list for more than 20 years running. Dining is an integral part of campus life, and we look forward to providing a memorable experience. With more than 30 restaurants to choose from, JMU Dining has something for everyone, offering convenience, flexibility, quality, value and healthy options with you in mind. Dining on campus provides the social experience essential to campus life, whether gathering with friends, taking study breaks, or to relax and unwind.

Meal Plan Basics

A meal plan unlocks delicious meals, snacks, beverages and more. [Explore our meal plan options](#), available to residents and commuters. Each plan offers Meal Punches and Dining Dollars. Both are conveniently loaded onto your JACard so there's no need to carry additional cards or cash.



If you have questions . . .

 WEBSITE: [JMU Dining](#)

 CALL: 540-568-6751

 dining@jmu.edu



Dining at a Glance

MEAL PUNCHES are included with a meal plan, with a designated amount available depending upon your plan. They reload daily or weekly and can be used in three different ways. Meal Punches give you all-you-care-to-eat access at our resident dining halls, E-Hall and D-Hall. They can also be used for a meal equivalency or 'Duke Deal', only available at select retail locations.

DINING DOLLARS can be used at any JMU Dining location as a declining dollar balance loaded for the semester. Enjoy the convenience of using them at dining halls, retail locations, convenience stores, concessions and on-campus vending machines. Unused Dining Dollars at the end of the fall semester roll over to the spring. However, any remaining funds at the end of the spring semester are non-refundable and cannot be transferred to the next term.

ALLERGIES OR SPECIAL DIETARY NEEDS?

At JMU Dining we recognize and accommodate food allergies, preferences and special dietary needs in a way that's personalized, sensitive and supportive. In fact, our employees undergo certified allergy training, and we pride ourselves on working with you to make sure you can make informed food choices. Visit our [website](#) for a detailed guide to navigating food allergies and special dietary restrictions.

SUSTAINABLE DINING We consistently strive to become more sustainable by embedding [environmental stewardship](#) in our everyday operations. Our programs and policies include the increase of sustainable food purchasing, educating and empower students to lead a sustainable lifestyle, prioritize circularity and reduce food waste. Together we can make a positive impact on both people and the planet.

Weeks of Welcome

COMPLETE BY



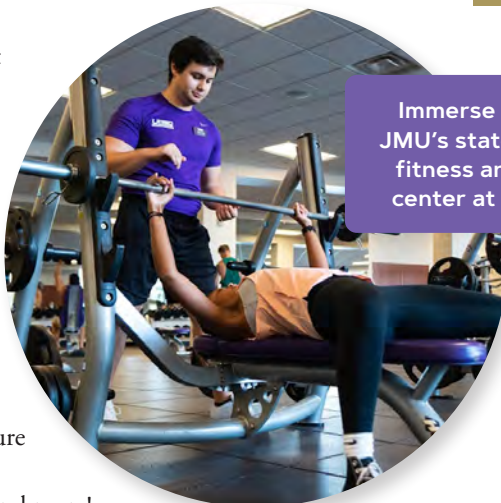
Once in Harrisonburg you are expected to participate in Weeks of Welcome which will allow you to take advantage of programs and entertainment designed to introduce you to the Madison culture. Familiarize yourself with JMU's academic expectations and campus resources, reconnect with your OPA and meet other JMU students. Weeks of Welcome starts a few days before classes begin and runs through mid-September.

JMU BeInvolved



Visit JMU's official campus engagement platform, BeInvolved by visiting the website or downloading the app. You can explore over 400 student organizations. We want students to

have safe and healthy experiences as they get involved on campus. Among other programs offered, all new students are required to attend a program during Weeks of Welcome where you will learn how things like hazing or hazardous drinking can occur, and how to respond if it does. Starting in August, you can preview the full Weeks of Welcome schedule including our signature events: New Student Convocation, UREC Fest, Playfair, Student Org. Night, Pep Rally, Block Party in the 'Burg and more!



Immerse yourself in JMU's state-of-the-art fitness and wellness center at UREC Fest.



Explore downtown Harrisonburg and collect your Friendly City swag at Block Party in the 'Burg.

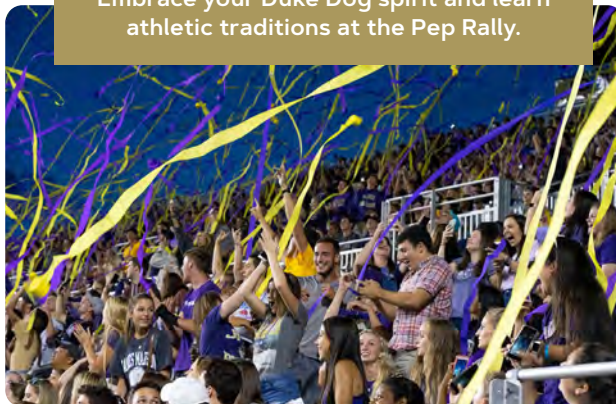


Get hyped and get connected with peers at Playfair.



Discover ways to connect to new groups and clubs at Student Org. Night.

Embrace your Duke Dog spirit and learn athletic traditions at the Pep Rally.



RELATED INFO:

Important Apps

Learn more about plugging into life at JMU with useful apps.



JUMP TO **Important Apps**

Getting Involved!

JMU is an incredible community because of the choices for active participation beyond the classroom.

Student Life

[The Student Life](#) team can help you find your place on campus and in the community. Joining student organizations is one of the primary ways to get involved, and comes with a lot of great benefits such as making friends and learning life skills. You can also find involvement through campus events, leadership development experiences, one-on-one consultations and more.



Madison Center for Civic Engagement

Dukes are voters and the [Madison Center for Civic Engagement](#) will help you register and learn about voting while also giving you a chance to talk across political and cultural differences about difficult issues. From Dukes Discourse Thursdays and educational primers on issues facing democracy, to our workshops on civic leadership and having difficult conversations, we'll help you constructively express your views, vote and be engaged civic leaders.



Center for Global Engagement

The [Center for Global Engagement](#) offers programs such as global mentorship, coffee hours, global virtual exchanges and workshops to engage JMU's globally-minded community. JMU truly has a world of opportunities! If you are considering studying abroad, it is never too early to start planning. We invite you to explore our full-semester and short-term programs to experience amazing cultures throughout the world.

Center for Multicultural Student Services

In addition to providing a home away from home to the multicultural community, [CMSS](#) promotes student success, holistic student development (academically, socially, culturally, professionally, and personally) and intergroup community engagement by cultivating and strengthening networking opportunities.



CMSS provides opportunities for students to develop a sense of belonging through staff, peer-to-peer connections and offering 50+ student affinity-based groups including some fraternities and sororities. In addition, CMSS offers HRD 123, a three-credit course that develops leadership, facilitation and presentation skills to prepare students for college, the workforce and to lead peers through campus dialogues on critical topics. CMSS is open to all students and hosts a variety of opportunities to engage in experiential learning trips, leadership conferences and educational programs.

Community Engagement and Volunteer Center

Gain experience by getting involved in local or global communities through [CEVC](#). Students describe it as some of the most profound experiences of their college careers. There are countless ways to connect with the diverse local community, participate in CEVC's award-winning Alternative Breaks and even work in the Harrisonburg community.



VALOR Resource Center

[The VALOR Resource Center](#) provides study space with computers and free printing, a fridge with free snacks and drinks, couches and even a massage chair to relax. It is open 24 hours a day with swipe access and all military connected students are welcome.



Spiritual Life & Well-Being (Religious Life)

A welcoming spiritual interfaith space to connect, reflect and build community. Individuals of all backgrounds are invited to enjoy a quiet place for study, prayer, mindful meditation or to attend programming hosted by more than 20 religious student organizations. For some, spiritual well-being is a profound way to find meaning in life, a sense of purpose, self-reflection and establish a sense of gratitude for yourself and others.

Parking & Alternative Transportation

You have options when navigating around campus, the Harrisonburg community and beyond. Access information about bus schedules, regional transportation, ride-sharing, biking and walking and more at the [Alternative Transportation website](#).

Parking

All vehicles parked on JMU property must be registered with Parking and Transit Services. Unregistered vehicles are subject to citation. You can purchase a virtual parking permit online through the [Parking and Transit Services web portal](#).

Bus service

The Harrisonburg Department of Public Transportation provides fare-free bus service for all JMU students. Bus routes begin at 7 a.m. and continue until about 11 p.m. on weekdays, with reduced schedules on weekends and holidays. The JMU Rideshare app provides point-to-point directions, bus routing, cycling and walking routes and carpool options. Several bus companies stop at Godwin Transit Center and provide transportation to local destinations, as well as airports and cities both in and out of state.

Biking

JMU is a Silver Level Bicycle Friendly University. There are over 10 miles of bike lanes on campus. If there is no bike lane, bikes are permitted to use the full car lane in the direction of traffic. Riders should obey traffic laws. Additionally, bikes are permitted on sidewalks and multi-use paths everywhere on campus. JMU strongly recommends wearing a helmet when riding on campus and locking your bike with a U-lock.



WEBSITE: [Alternative Transportation](#)



WEBSITE: [JMU Parking](#)



Official Transcripts

COMPLETE BY



Please have your final official transcripts submitted to JMU Admissions. Remember, your admission to JMU is contingent upon the successful completion of your final coursework.



Include Environmental Sustainability in Your JMU Experience

Actions matter. We are a community committed to a sustainable future, and environmental stewardship is part of our culture. 71% of respondents to our Continuing Student Survey say it is important to them that JMU students make daily choices to help the environment. Every individual can make a difference for people and planet as a citizen, consumer and member of organizations and communities. Collectively, we can make a positive impact. In your role as a new JMU community member, regardless of your major, you should take two actions before arriving on campus: read the following description of JMU's environmental sustainability learning opportunities and go to the website shown to plan how you will include environmental sustainability in your JMU experience.

Understand the Opportunities

The university fosters interdisciplinary education, literacy and research in sustainability. In addition to environment-focused concentrations and minors, there are many sustainability courses open to undergraduates through General Education. Study abroad, community service, civic engagement and research programs enable students from all majors to address environmental sustainability challenges. Students play an integral role in university efforts to build sustainable community through partnerships, outreach and service, including through participation in one of the many student organizations that are tackling sustainability issues.



Chart Your Path

Regardless of your major, you can graduate prepared to contribute to a sustainable future. Follow these three steps:

- ◆ **Learn more.** Select academic experiences that will develop your environmental stewardship knowledge and reasoning skills. Familiarize yourself with JMU's sustainability performance as an institution.
- ◆ **Do more.** Choose to participate in service activities and dialogues with others to create a healthier planet.
- ◆ **Lead.** Contribute to sustainable solutions by driving progress and innovating. For example, lead an undergraduate research project or a civic engagement initiative.



WEBSITE: [Environmental Stewardship](#)



Discover the Opportunities at JMU

7

Environmental **Minors**

7

Environmental **Concentrations**

80

Environmental **Courses**

Important Mobile Apps



Canvas
Access your classes and materials



Handshake Jobs & Careers
Receive personalized job and internship recommendations



TimelyCare
Provides 24-hour access to counseling and mental health resources



CBORD Mobile ID – for CS GOLD
Use as your virtual JACard for dining, vending and more



JMU BeInvolved
Find student organizations or clubs that match your interests and events to attend throughout the year



JMU UREC
Allows access to UREC facilities and program registration



Okta Verify
Secure your digital accounts (MyMadison, Canvas, etc.) by using two-factor authentication



PassioGo
Catch a ride on a bus via the Harrisonburg Department of Public Transportation both on and off campus



JMU SHIELD
Receive important safety alerts and access campus safety resources

JMU JARGON

CEVC is Community Engagement & Volunteer Center, which connects you to volunteer opportunities.

Chips is a full-service convenience store located near the Bookstore.

D-Hall is an all-you-care-to-eat dining facility, located near the Quad.

Duke Dog Alley is a tunnel under I-81 that allows you to get from the west side of campus to UREC, Convo and east campus.

E-Hall is the all-you-care-to-eat dining facility on the east side of campus.

FLEX is a declining-balance account that you or your family can add money to.

JACard is your JMU Access Card.

LSS is Learning Success Strategies, an individualized academic coaching program available to all Dukes.

OCL is the Off-Campus Life office that can assist you with finding off-campus housing and roommates.

ODS is the Office of Disability Services, supporting students who need accommodations.

OPAs are Orientation Peer Advisers who will assist you in your transition to JMU.

SSC is the Student Success Center. This space is full of resources to help you be more efficient, effective and engaged learners with space to study, collaborate and learn.

TDU is Taylor Down Under, a great place to hang out, play a board game with friends or study.

UDAP is the Utility Deposit Assistance Program, a JMU-sponsored program in partnership with utility companies to allow students off-campus utility connections without paying various deposits.

UHC is the University Health Center, where you can receive general medical services.

UREC is the University Recreation Center, a facility designed to meet your fitness and adventure goals.

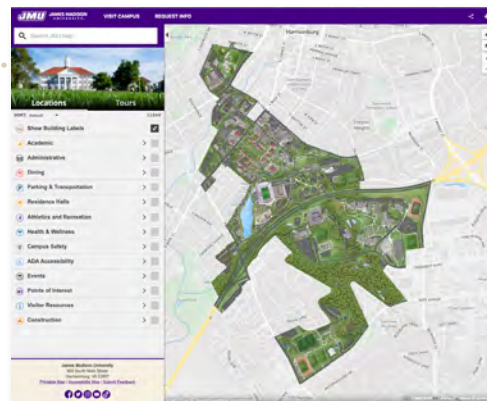
Questions?	Contact	Website	Phone Number
Athletic Ticket Office	athletic-ticket@jmu.edu	jmusports.com	540-568-3853
Card Services	cardsrv@jmu.edu	jmu.edu/cardctr	540-568-6446
Center for Global Engagement		jmu.edu/global	
International Student and Scholar Services	isss@jmu.edu	jmu.edu/global/isss	540-568-6119
Study Abroad	studyabroad@jmu.edu	jmu.edu/global/abroad	540-568-6419
Center for Multicultural Student Services	multicultural@jmu.edu	jmu.edu/multicultural	540-568-6636
Counseling Center		jmu.edu/counselingctr	540-568-6552
General Education Program	gened@jmu.edu	jmu.edu/gened	540-568-2852
Information Technology Help Desk	helpdesk@jmu.edu	jmu.edu/computing/helpdesk	540-568-3555
Office of Orientation & Transition	orientation@jmu.edu	jmu.edu/orientation	540-568-1787
Office of Disability Services	disability-svcs@jmu.edu	jmu.edu/ods	540-568-6705
Office of Financial Aid and Scholarships	fin_aid@jmu.edu	jmu.edu/financialaid	540-568-7820
Office of Residence Life	res-life@jmu.edu	jmu.edu/orl	540-568-4663
Office of the Registrar	registrar@jmu.edu	jmu.edu/registrar	540-568-6281
Veterans Benefits		jmu.edu/registrar/veterans	540-568-4769
University Advising	transferadvising@jmu.edu	jmu.edu/advising	540-568-3457
University Business Office	ubo@jmu.edu	jmu.edu/ubo	540-568-6505
University Health Center	healthctr@jmu.edu	jmu.edu/healthcenter	540-568-6178
University Recreation Center (UREC)	urec@jmu.edu	jmu.edu/recreation	540-568-8732

Campus Map

Our Campus Map is fully digital and interactive, allowing you to select from a number of filters.



WEBSITE: [Interactive Campus Map](#)



Academic Calendar



ACADEMIC CALENDAR



WEBSITE: [Academic Calendar](#)

Go Dukes!



James Madison University does not discriminate on the basis of race, color, national origin, religion, gender, age, veteran status, political affiliation, sexual orientation or disability with respect to employment or admissions or in connection with its programs or activities. Inquiries or requests for reasonable accommodation of disability may be directed to the activity coordinator or the appropriate university office.

GUESTS AND VISITORS:

Office of Equal Opportunity
540-568-6991 phone

STUDENTS WITH DISABILITIES:

Office of Disability Services
540-568-6705 phone



**JAMES MADISON
UNIVERSITY**

**Office of Orientation
and Transition**

MSC 1010
Student Success Center
Harrisonburg, VA 22807
540-568-1787 phone
orientation@jmu.edu
jmu.edu/orientation
2025